



WILTON CARPETS

CREATIONS

Ready to Weave Collection





Creations _____

This striking new collection can be recoloured from any one of our standard palettes, woven, and on its way to you within just 4 weeks.

Showcasing our new palette, Creations is a contemporary and versatile collection, featuring enduringly attractive greys alongside confident natural neutrals; think sky blue, and zesty greens. The palette offers contrasting warmth with mid-tone blush, spicy oranges and the richness of ruby and jade.

Offering real creativity, you can choose colourways from any of our 3 standard palettes, shown overleaf; as long as all your colours are from the same palette.

Cool and classy, the designs combine simple elegance with real usability. Perfect in hotels, restaurants, apartments; all spaces which need to combine style with craftsmanship and durability.

Get in touch to discuss your project.

sales@wiltoncarpets.com
01722 746 000

Colour _____

Take a leaf through the beautiful designs in this brochure, choose your colour combination from any one of the palettes here, and get creative. Pick tones to complement the scheme or be bold with a contemporary clash.

Have a look at the design hub on our website; it allows you to play with colour combinations and bring your design to life:

wiltontdesignhub.com

You can save or download images here for your own use or to send to us to start a conversation with our specialist sales team. We'd love to hear from you.

Palette No: 1
DIMENSIONS



Palette No: 2
CREATIONS



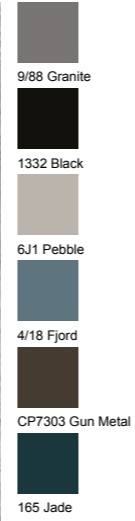
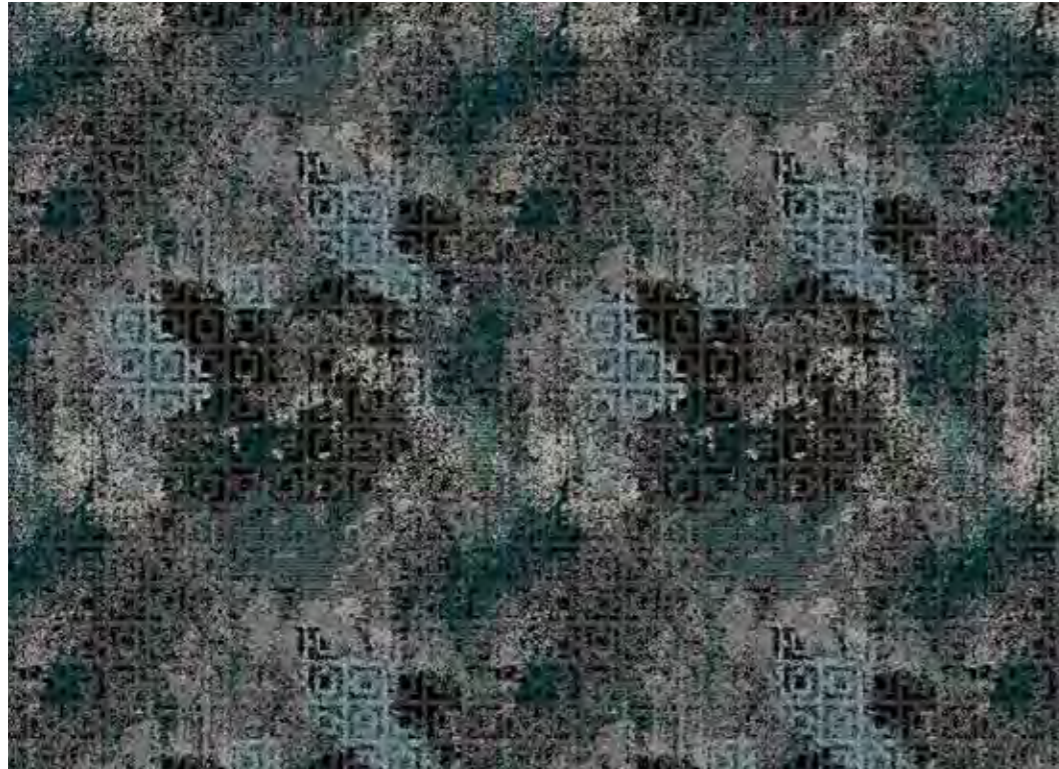
Palette No: 3
OPTIMUM





Design No: 30164-76

Pattern repeat: 0.91 SM



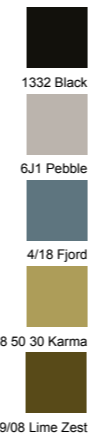
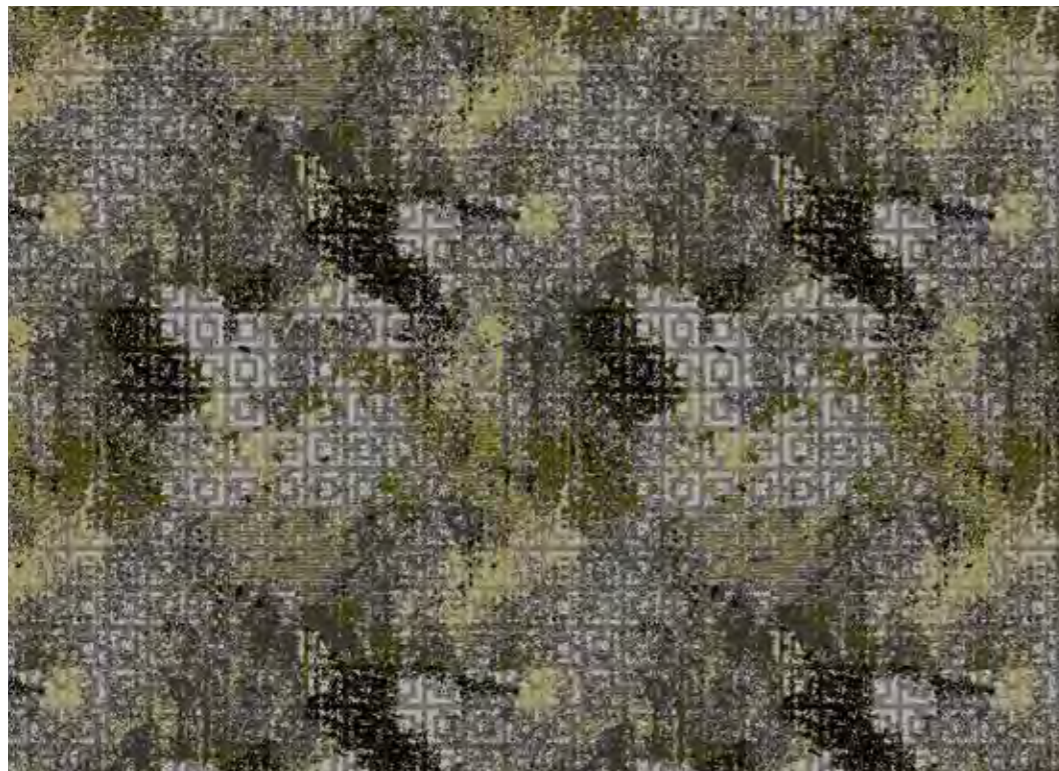
Design No: 30166-76

Pattern repeat: 1.83 SM



08

09



Design No: 30165-13

Pattern repeat: 0.91 SM

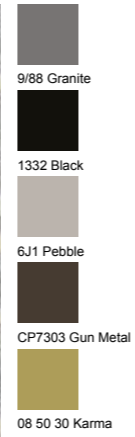
Design No: 30167-88

Pattern repeat: 1.83 SM



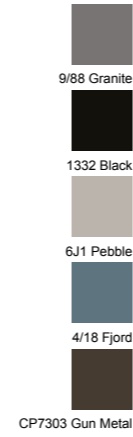
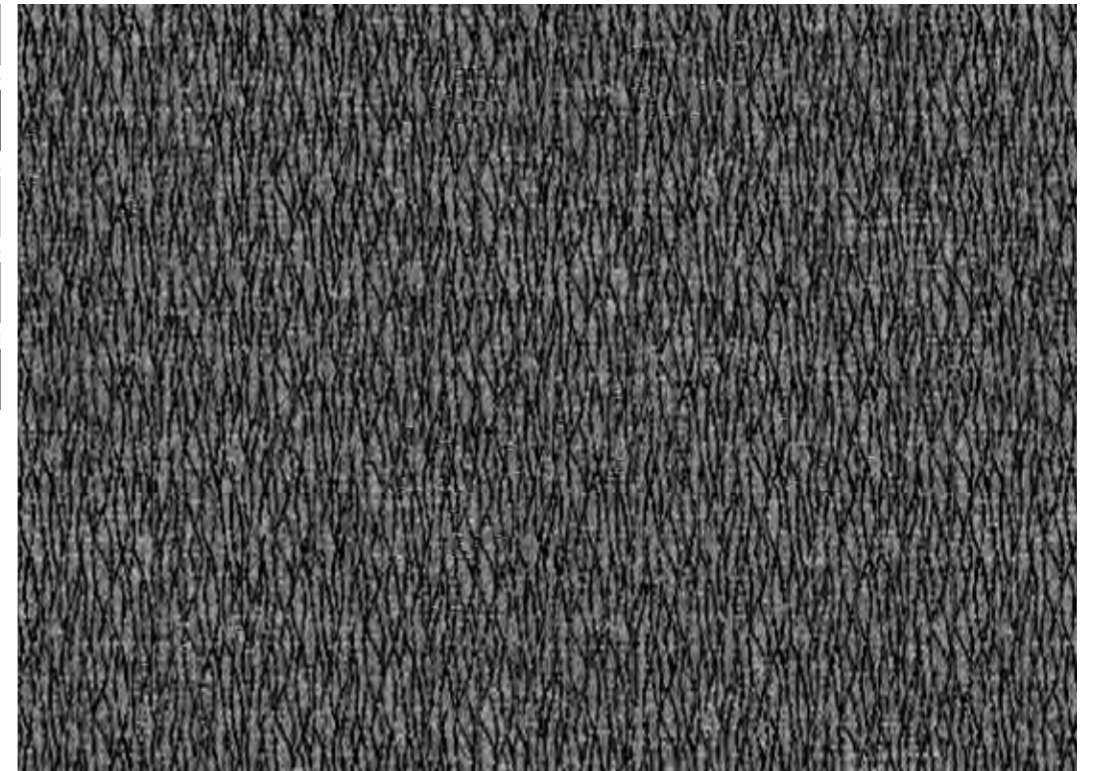
Design No: 30168-76

Pattern repeat: 1.88 SM

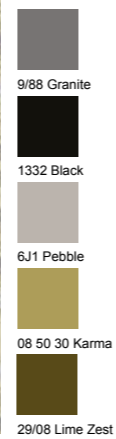


Design No: 30170-300

Pattern repeat: 1.03 SM



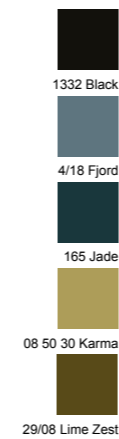
10



Design No: 30169-89

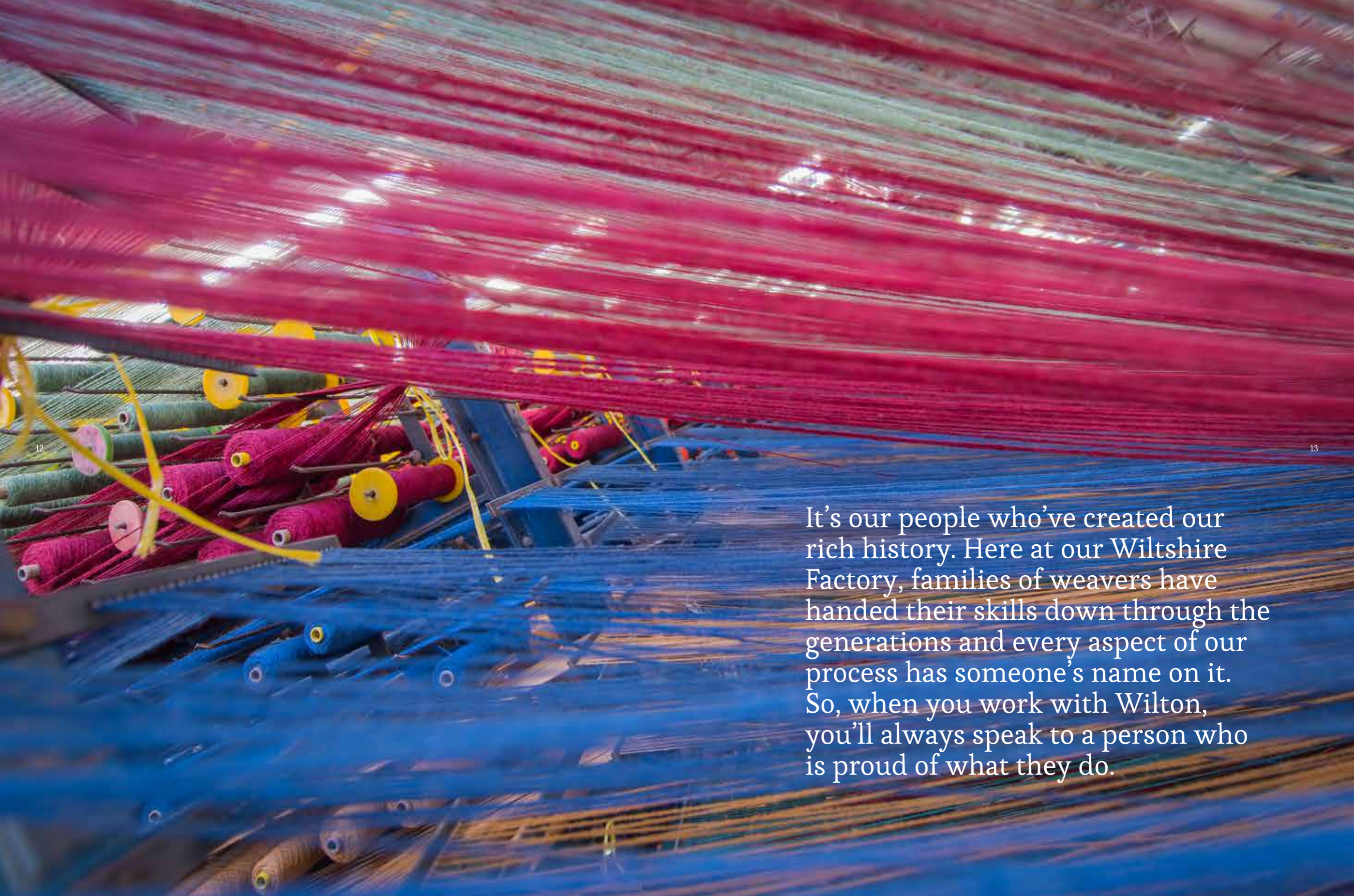
Pattern repeat: 1.88 SM

11



Design No: 30171-89

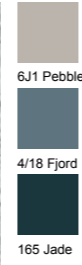
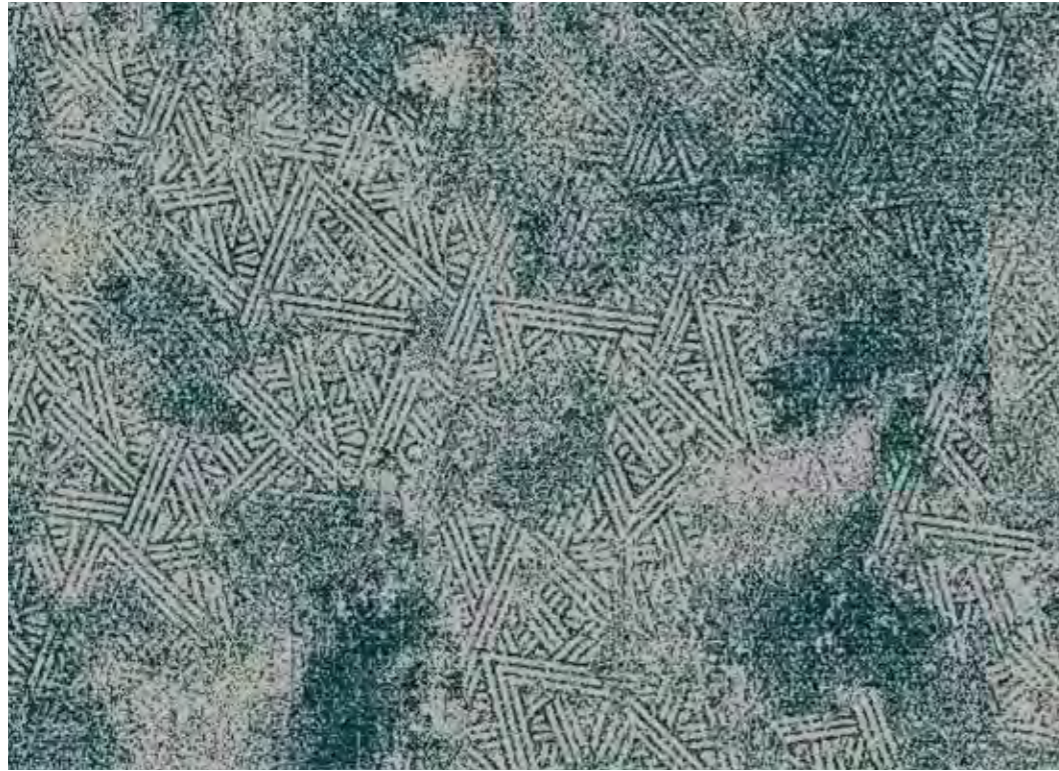
Pattern repeat: 1.03 SM



It's our people who've created our rich history. Here at our Wiltshire Factory, families of weavers have handed their skills down through the generations and every aspect of our process has someone's name on it. So, when you work with Wilton, you'll always speak to a person who is proud of what they do.

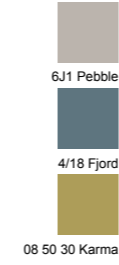
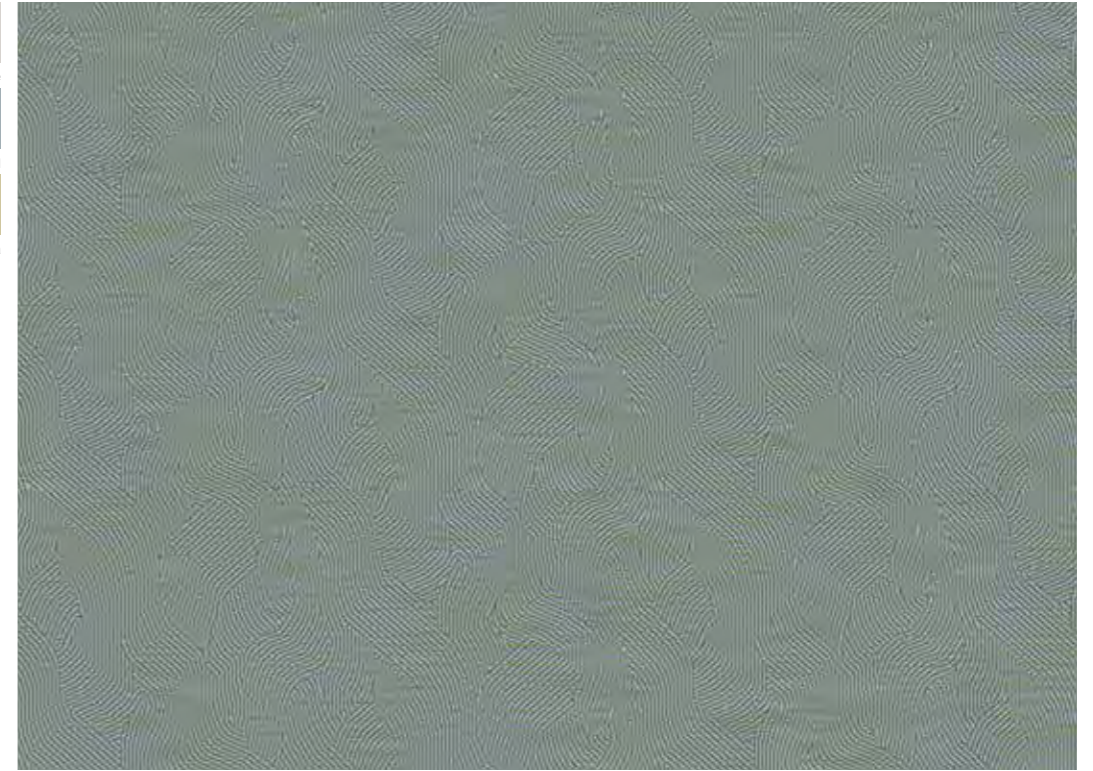
Design No: 30172-73

Pattern repeat: 2.29 SM

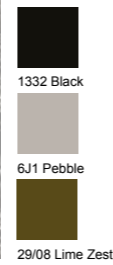


Design No: 30174-89

Pattern repeat: 0.53 SM



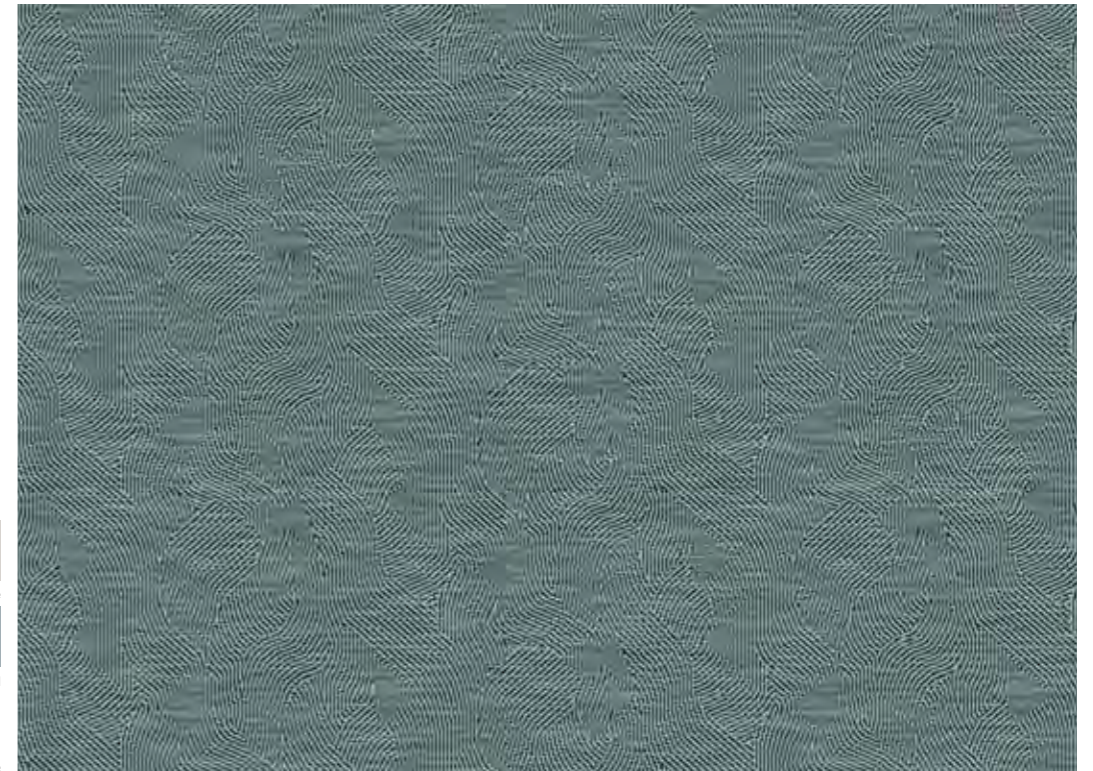
14



Design No: 30173-13

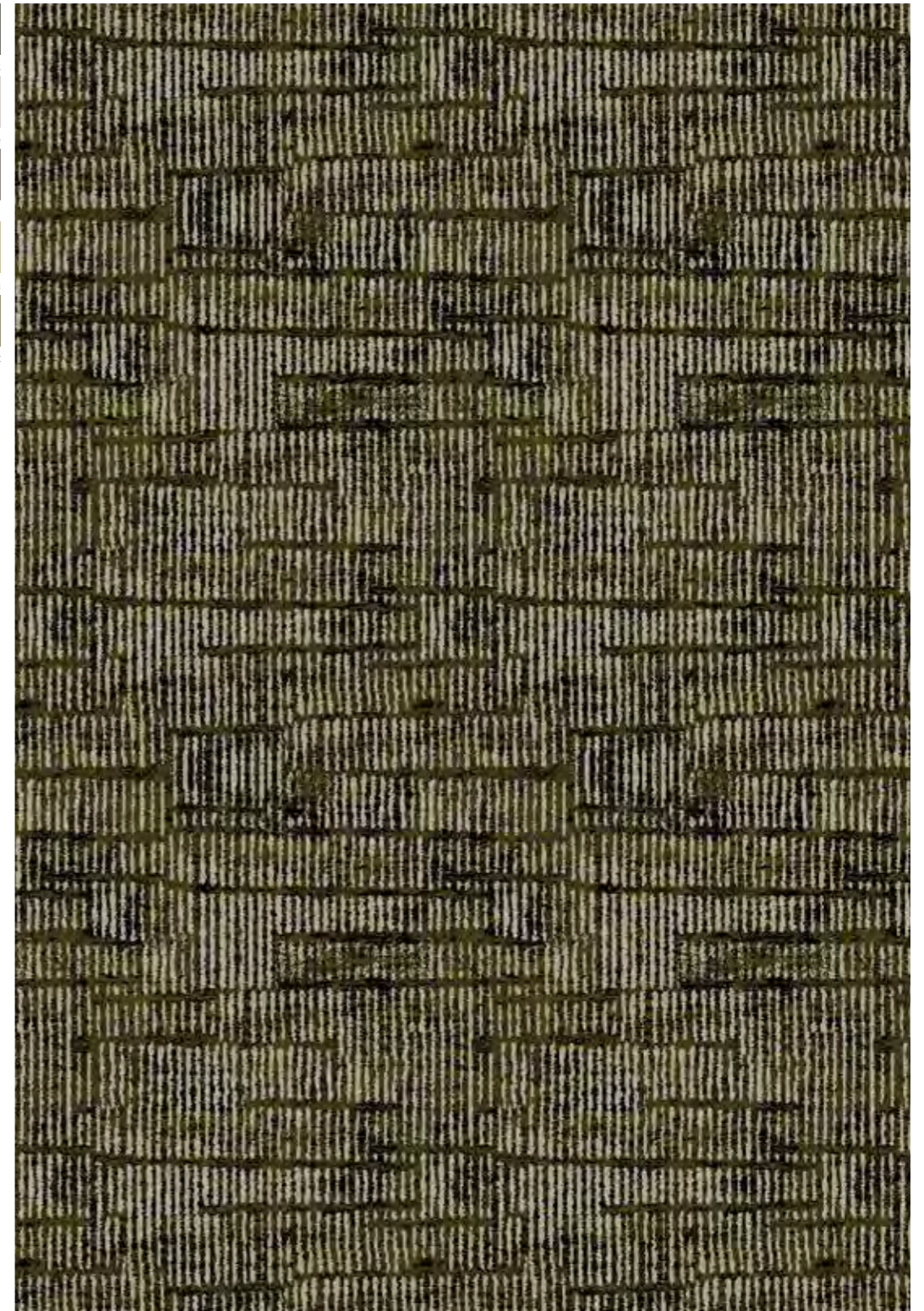
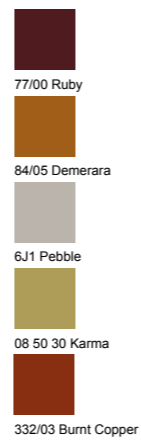
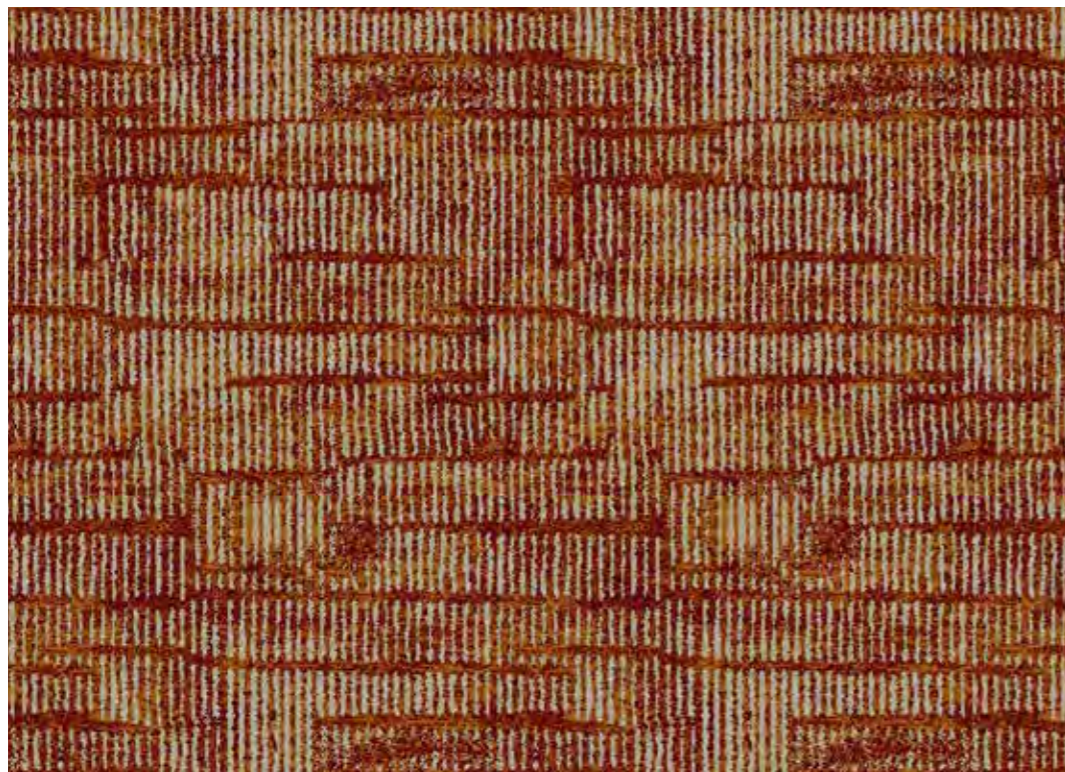
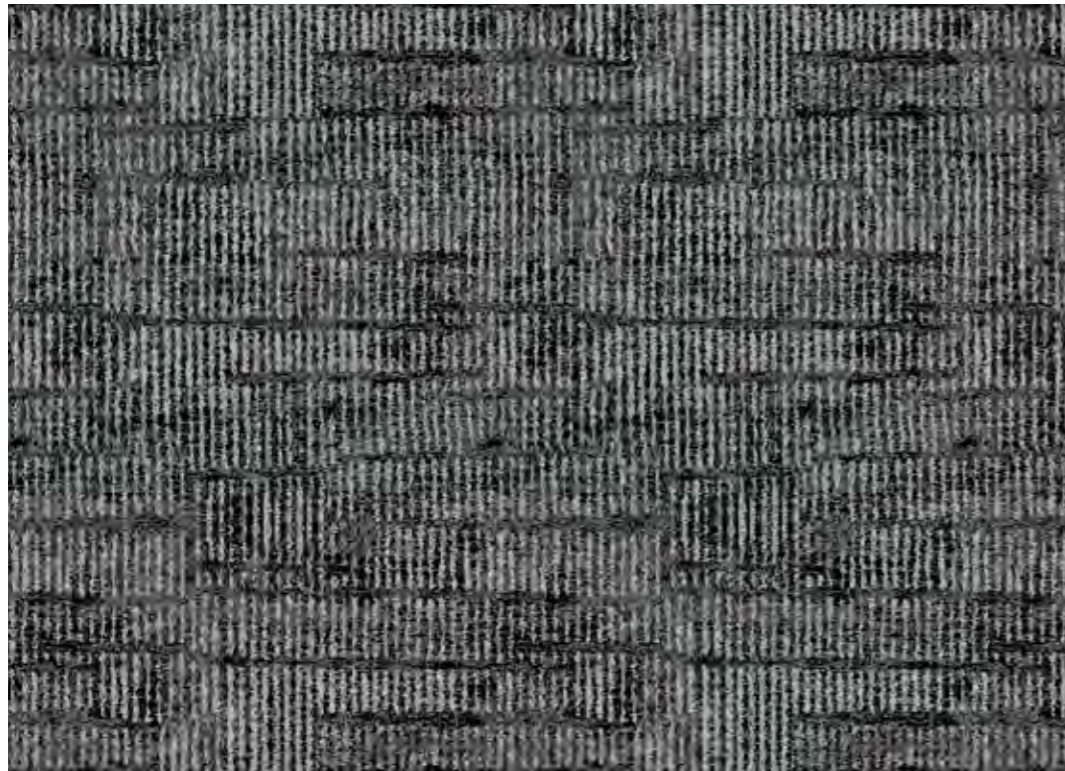
Pattern repeat: 2.29 SM

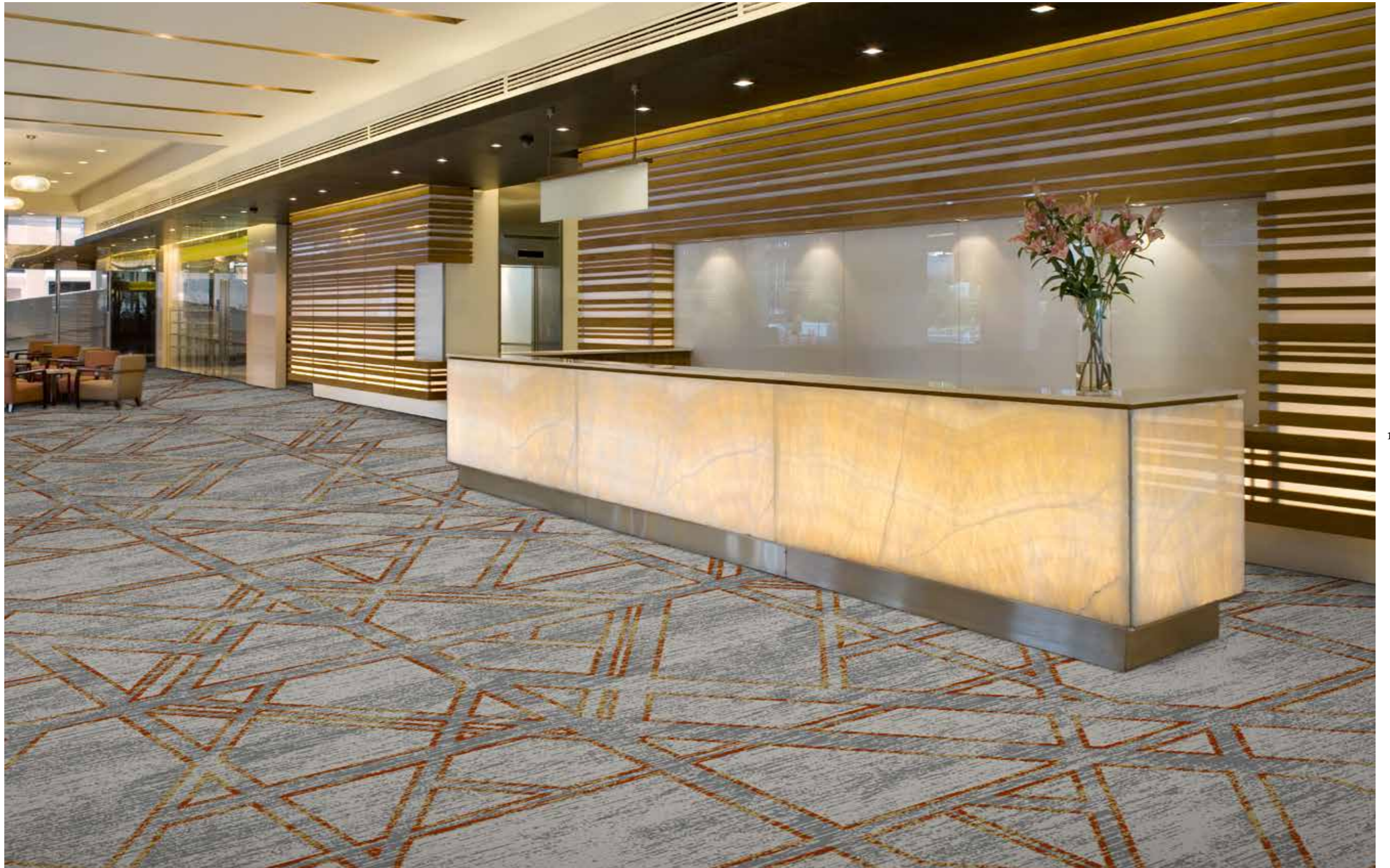
15



Design No: 30175-300

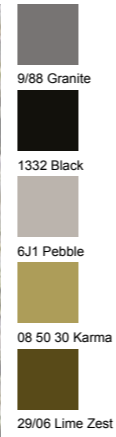
Pattern repeat 0.53 SM





Design No: 30179-76

Pattern repeat: 0.91 SM



20

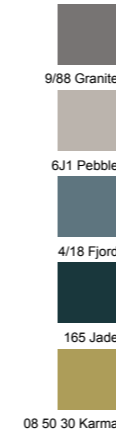


Design No: 30180-88

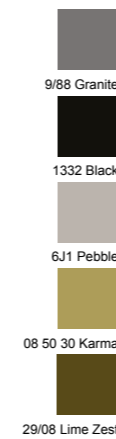
Pattern repeat: 0.91 SM

Design No: 30181-300

Pattern repeat: 0.91 SM



21

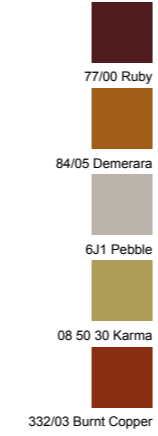
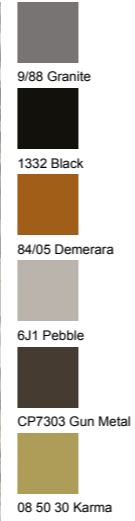


Design No: 30182-89

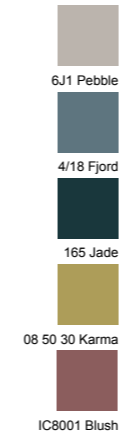
Pattern repeat: 0.91 SM

Design No: 30183-46

Pattern repeat: 1.83 SM



22

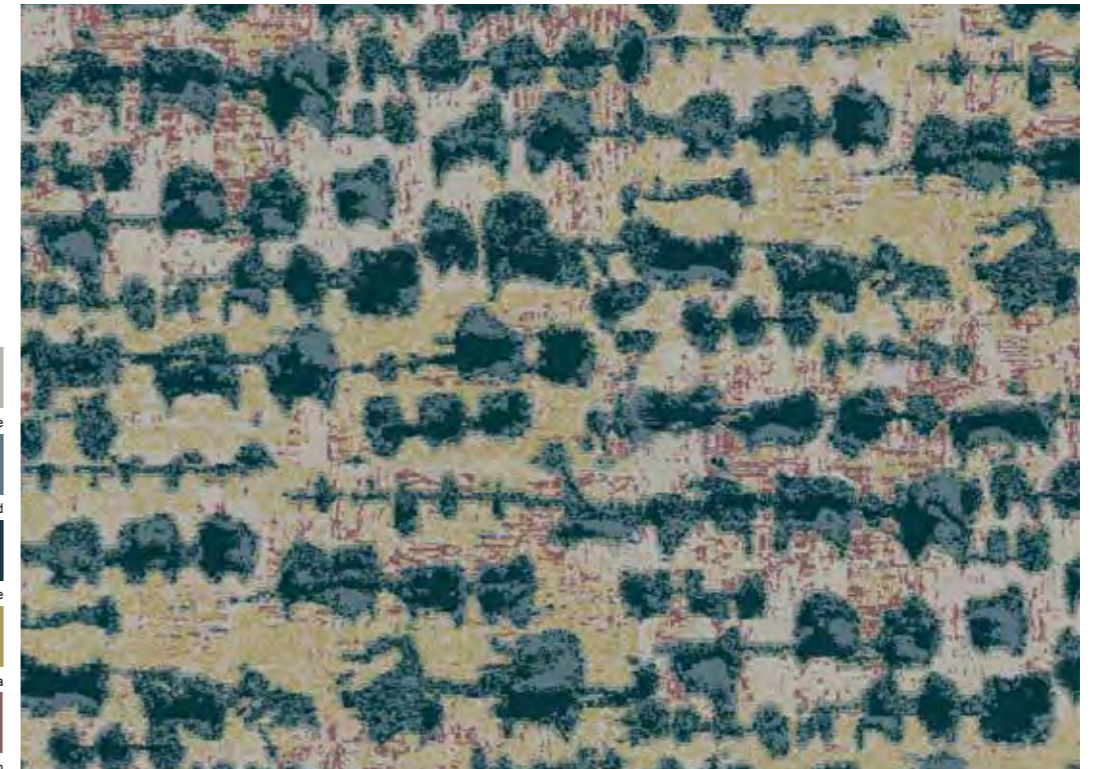
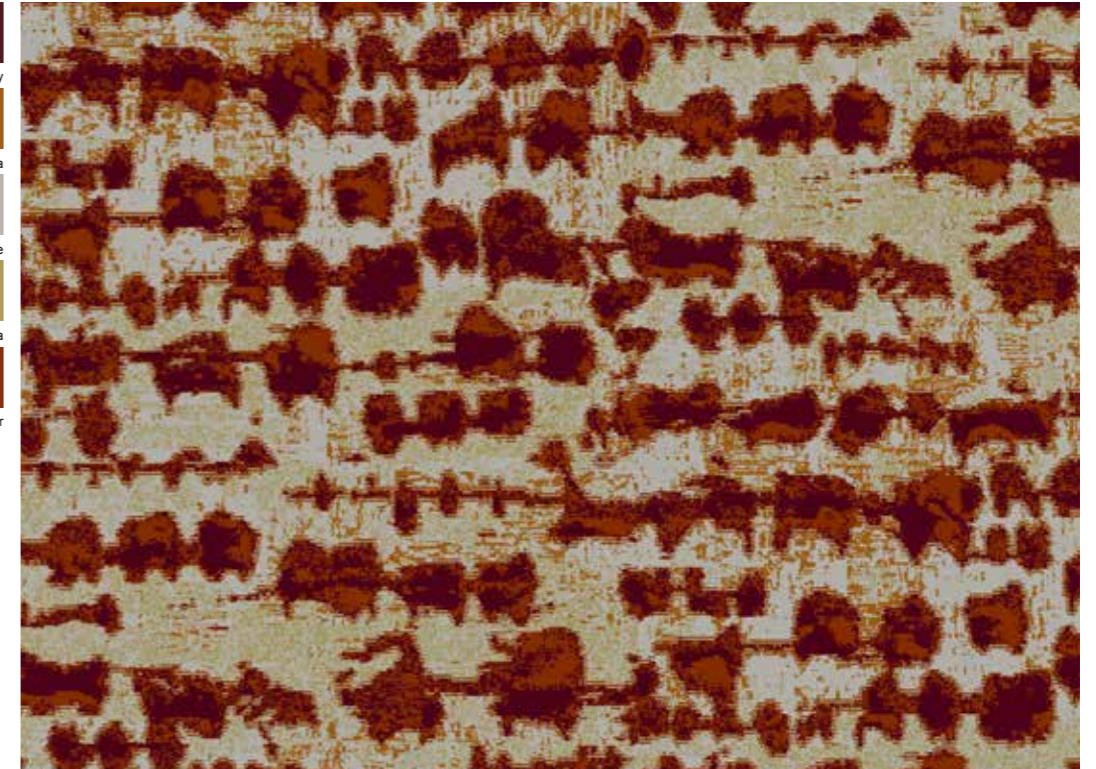


Design No: 30184-300

Pattern repeat: 1.83 SM

Design No: 30188-45

Pattern repeat: 1.64 1/2 drop



Design No: 30189-300

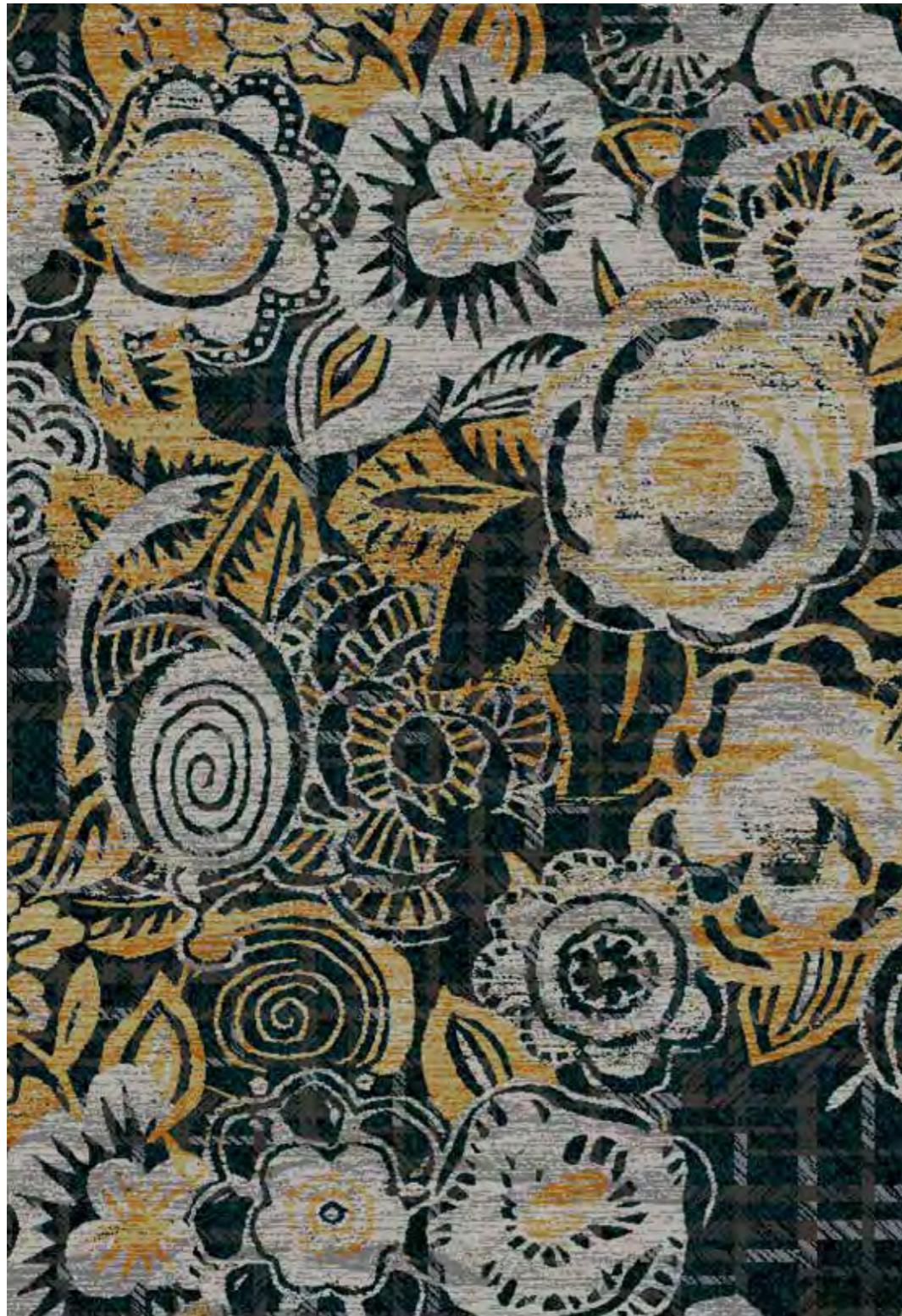
Pattern repeat: 1.64 1/2 drop


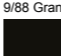
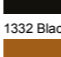



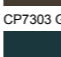
23



Design No: 30187-89

Pattern repeat: 3.14 SM


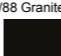
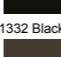



-  9/88 Granite
-  1332 Black
-  84/05 Demerara
-  6J1 Pebble
-  CP7303 Gun Metal
-  165 Jade
-  08 50 30 Karma

Design No: 30226-58

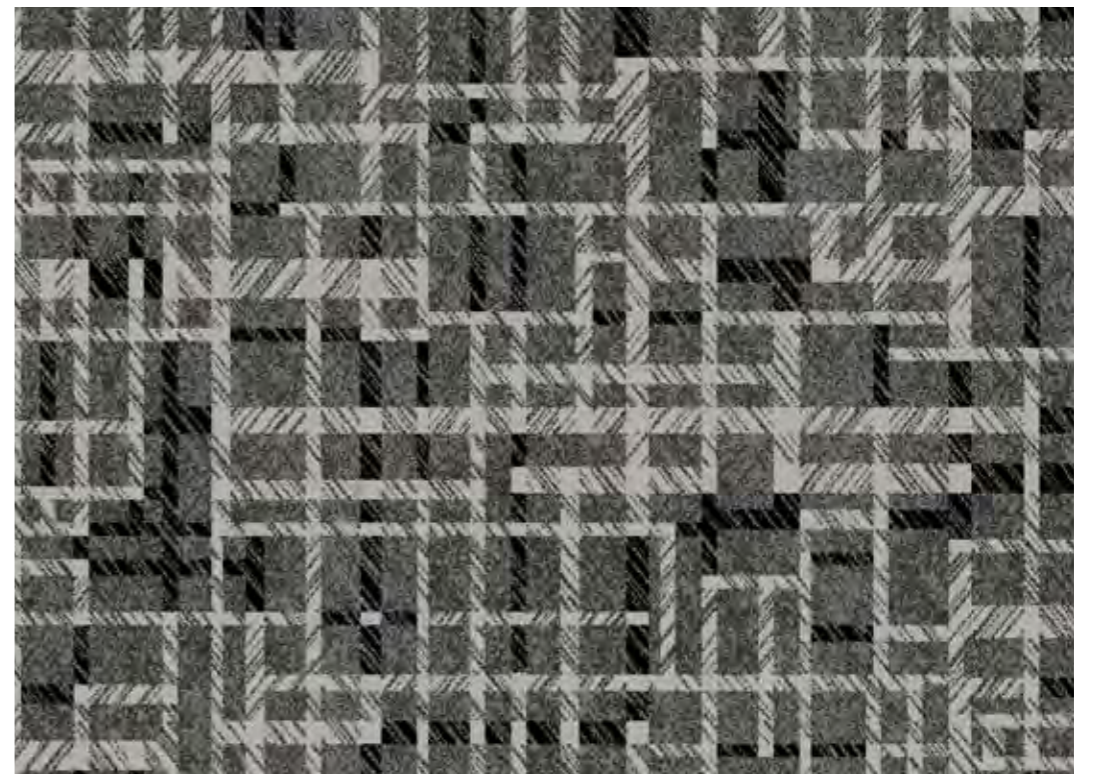
Pattern repeat: 2.13 SM


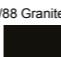
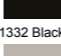



-  9/88 Granite
-  1332 Black
-  CP7303 Gun Metal
-  165 Jade

26

27



-  9/88 Granite
-  1332 Black
-  6J1 Pebble
-  CP7303 Gun Metal

Design No: 30186-76

Pattern repeat: 2.13 SM



The most successful artists truly feel at one with their medium. Our specialist designers are experts in the weaving process and know our looms so well that they ensure the wool, the weave and the design create the right chemistry.

Design No: 30190-45

Pattern repeat: 2.27 SM



- 9/88 Granite
- 77/00 Ruby
- 84/05 Demerara
- 6J1 Pebble
- CP7303 Gun Metal
- 08 50 30 Karma
- 332/03 Burnt Copper
- 29/08 Lime Zest

Design No: 30192-46

Pattern repeat: 1.82 SM



- 9/88 Granite
- 77/00 Ruby
- 84/05 Demerara
- 6J1 Pebble
- 4/18 Fjord
- IC8001 Blush

30



- 9/88 Granite
- 1332 Black
- 6J1 Pebble
- 4/18 Fjord
- CP7303 Gun Metal
- 165 Jade
- 08 50 30 Karma
- 29/08 Lime Zest

Design No: 30191-36

Pattern repeat: 2.27 SM

31



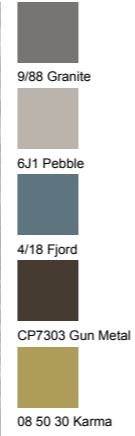
- 9/88 Granite
- 6J1 Pebble
- 4/18 Fjord
- CP7303 Gun Metal
- 165 Jade
- 08 50 30 Karma

Design No: 30193-89

Pattern repeat: 1.82 SM

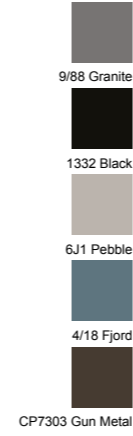
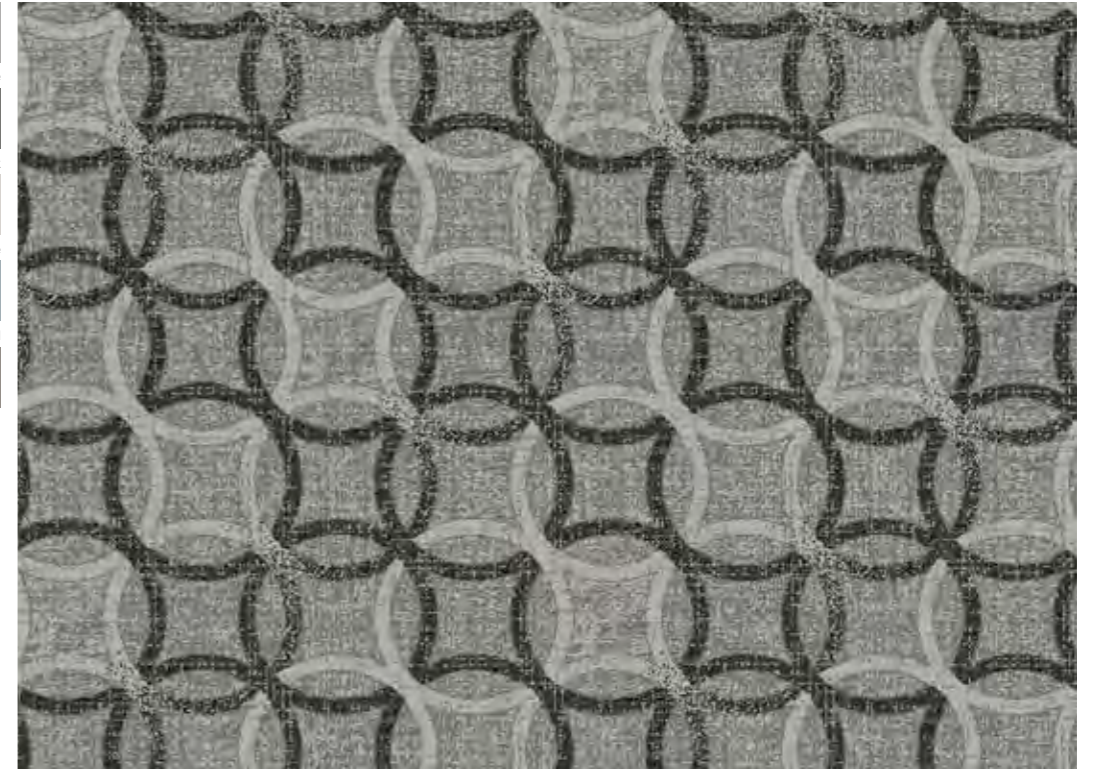
Design No: 30194-76

Pattern repeat: 1.52 SM

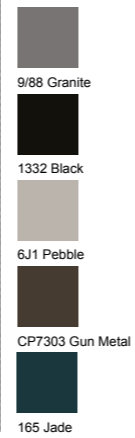
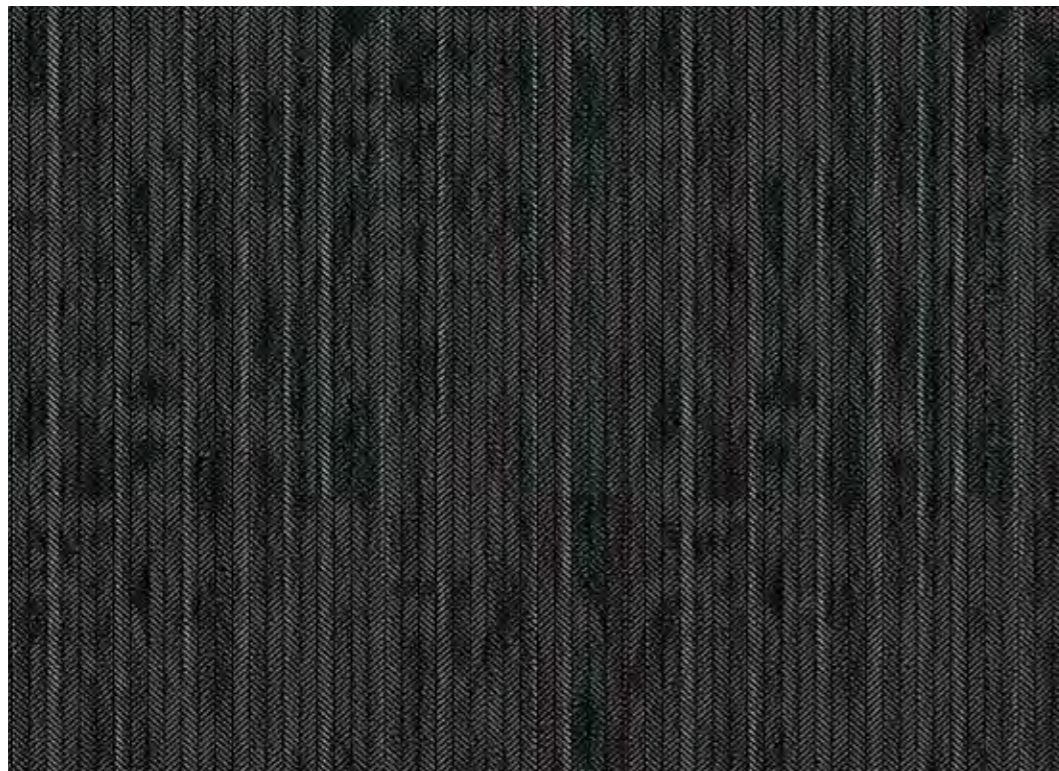


Design No: 30196-73

Pattern repeat: 1.04 SM



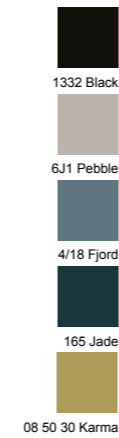
36



Design No: 30195-13

Pattern repeat: 1.52 SM

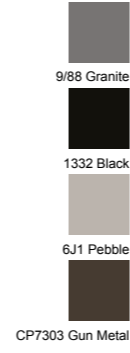
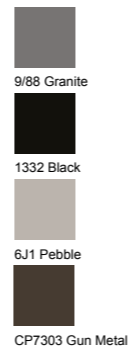
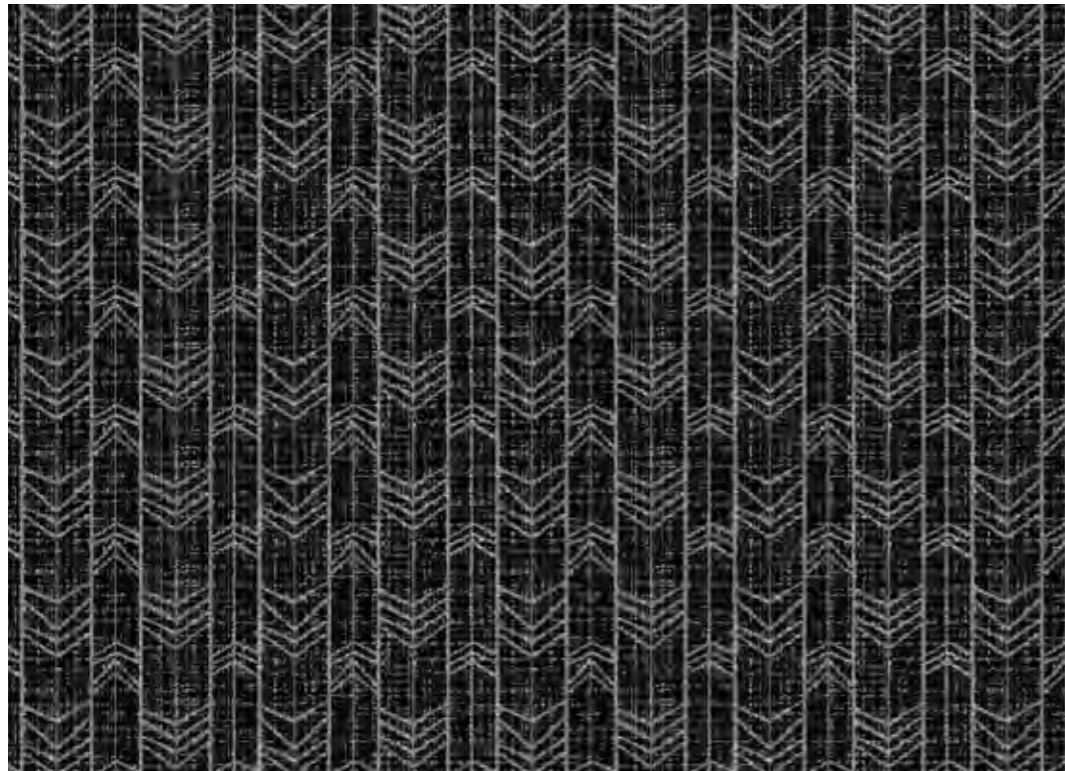
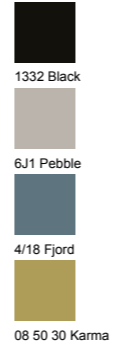
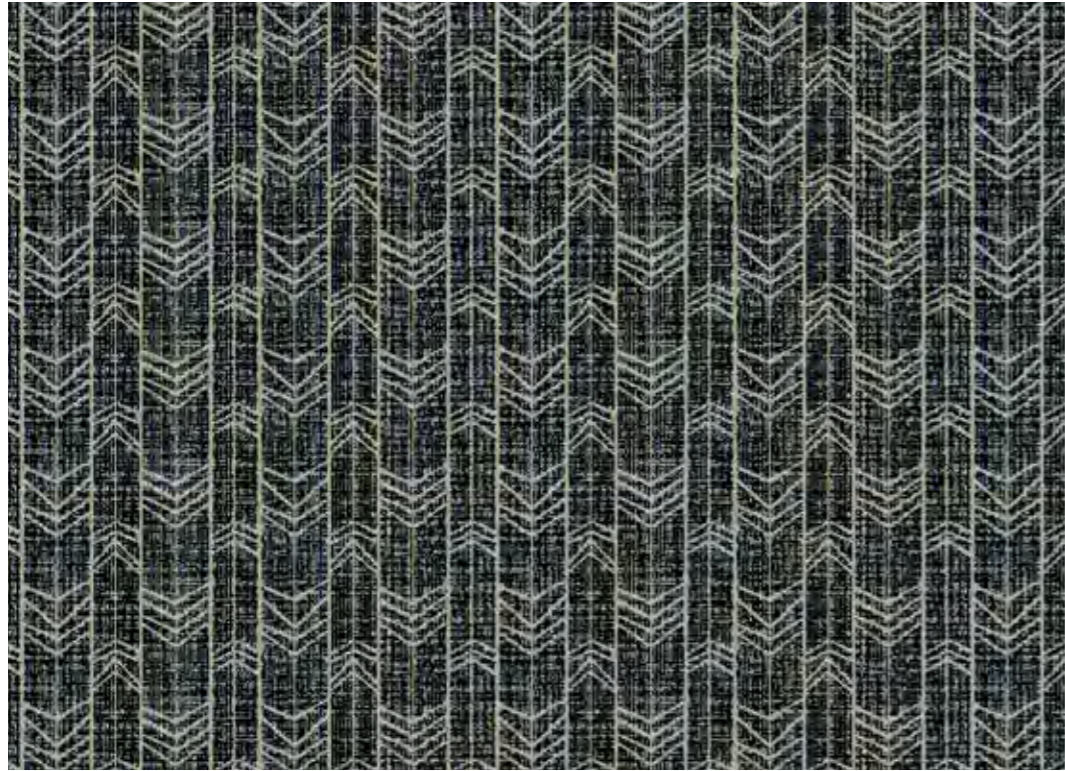
37



Design No: 30197-300

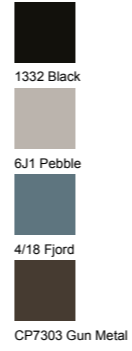
Pattern repeat: 1.04 SM



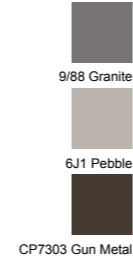
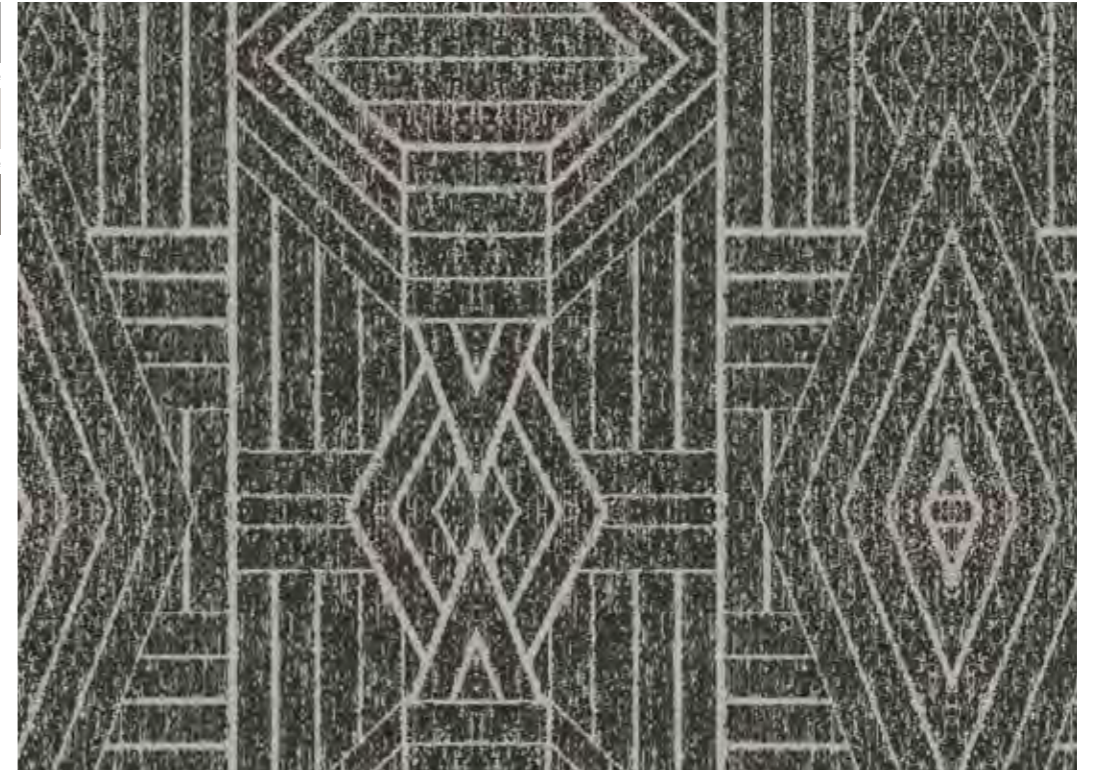




Design No: 30202-300 Pattern repeat: 0.91 SM



Design No: 30204-77 Pattern repeat: 1.74 SM

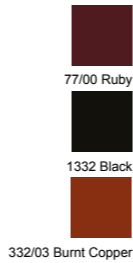
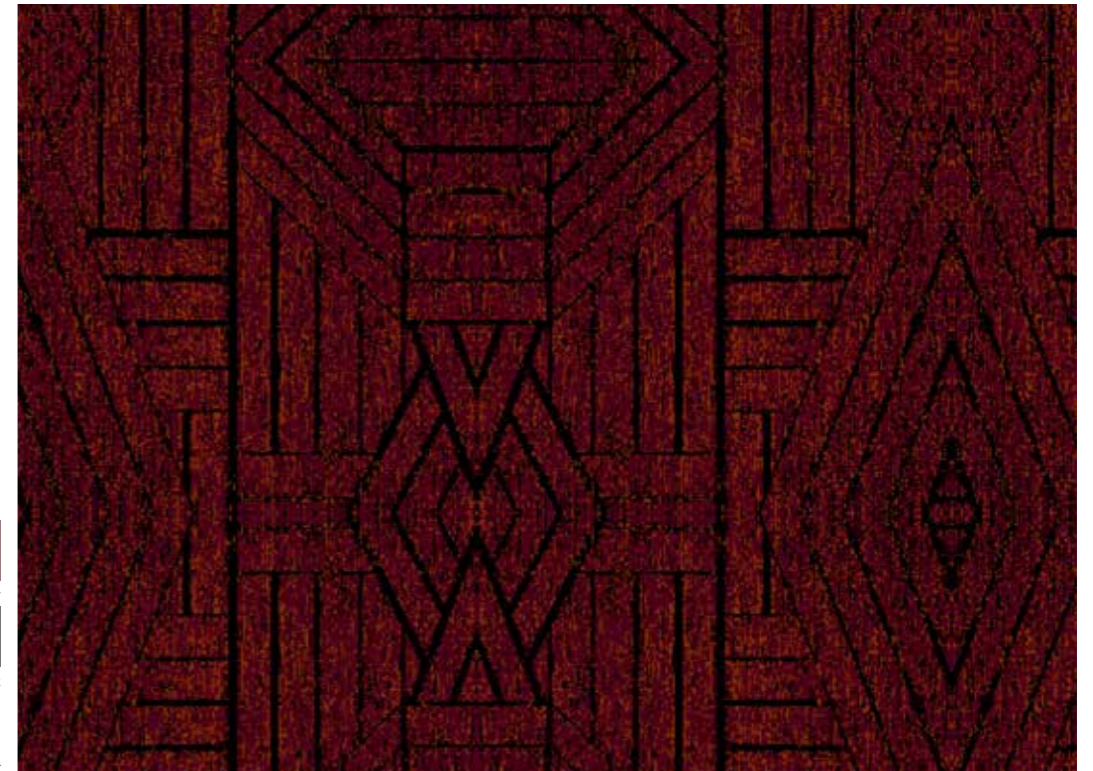


42



Design No: 30203-89 Pattern repeat: 0.91 SM

43



Design No: 30205-93 Pattern repeat: 1.74 SM

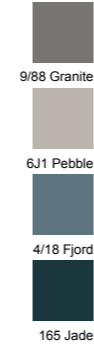
Design No: 30206-76

Pattern repeat: 0.98 155 row drop



Design No: 30208-76

Pattern repeat: 2.40 SM



44



Design No: 30207-77

Pattern repeat: 1.83 SM

45

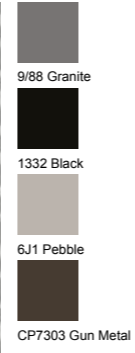
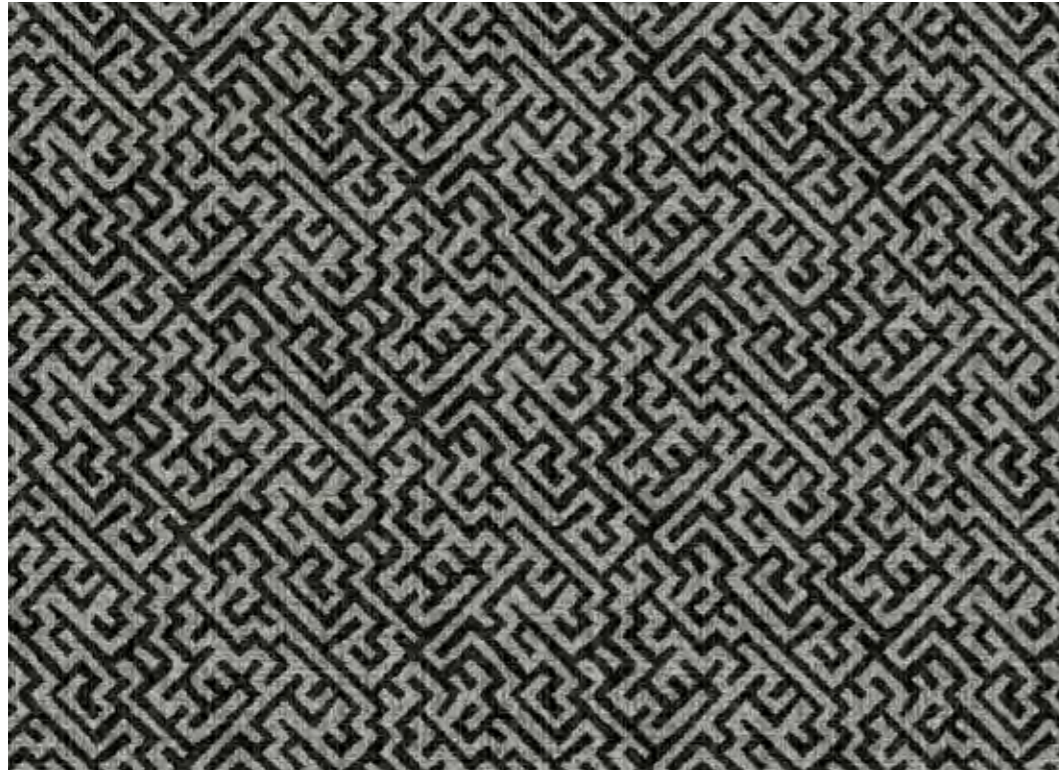


Design No: 30209-73

Pattern repeat: 2.40 SM

Design No: 30210-13

Pattern repeat: 1.83 SM



32

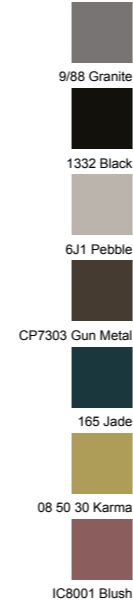
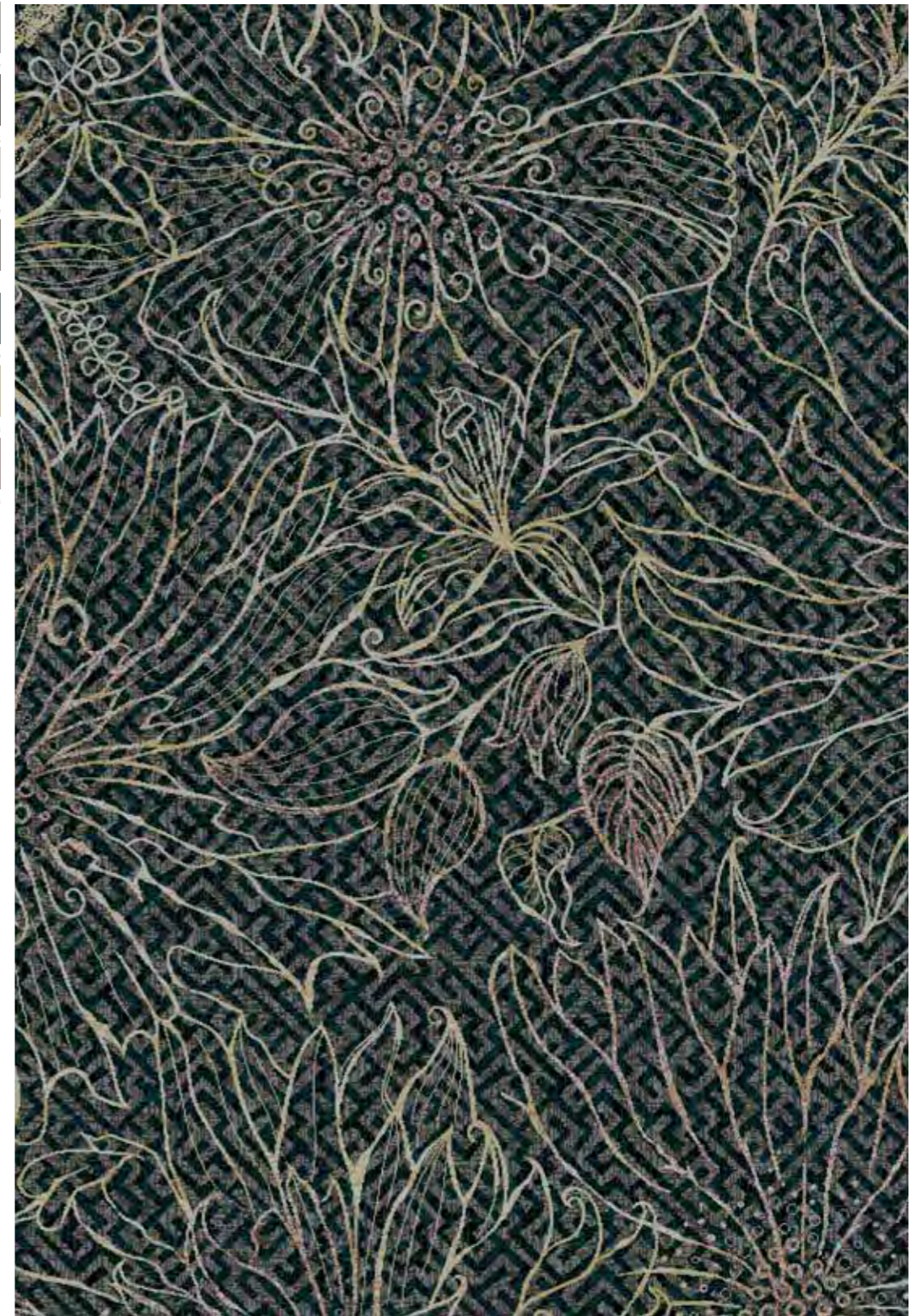


Design No: 30211-300

Pattern repeat: 1.83 SM

Design No: 30185-76


Pattern repeat: 3.66 M 1/2 drop



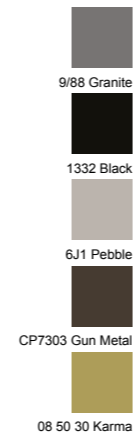
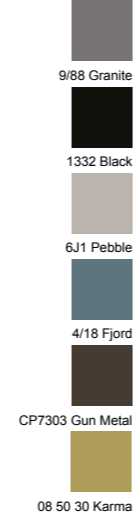
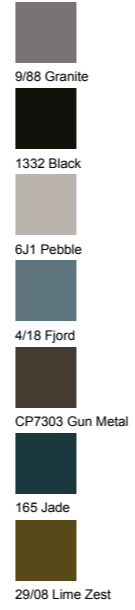
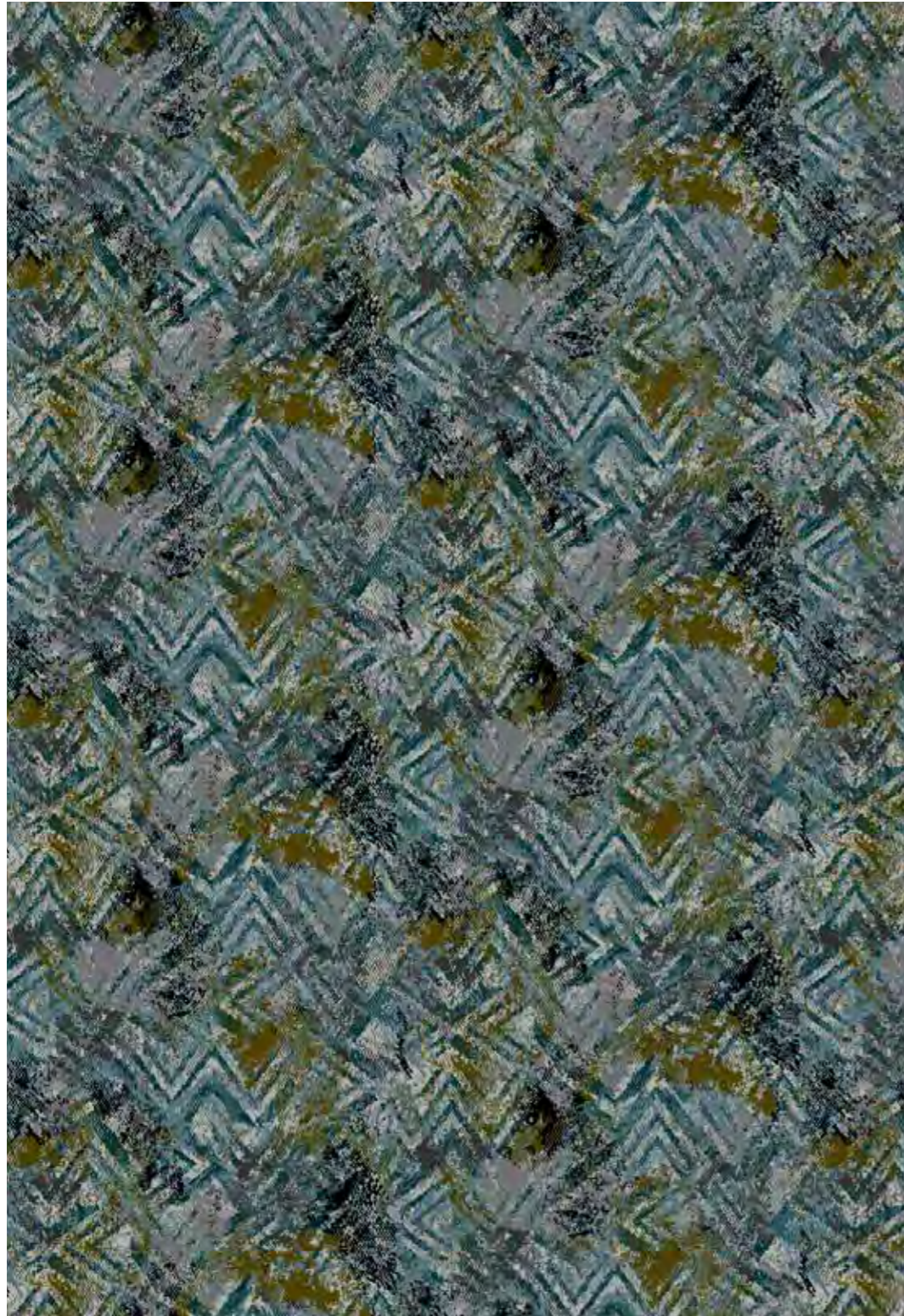
33

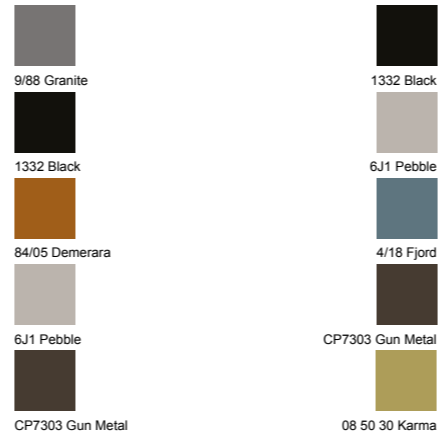
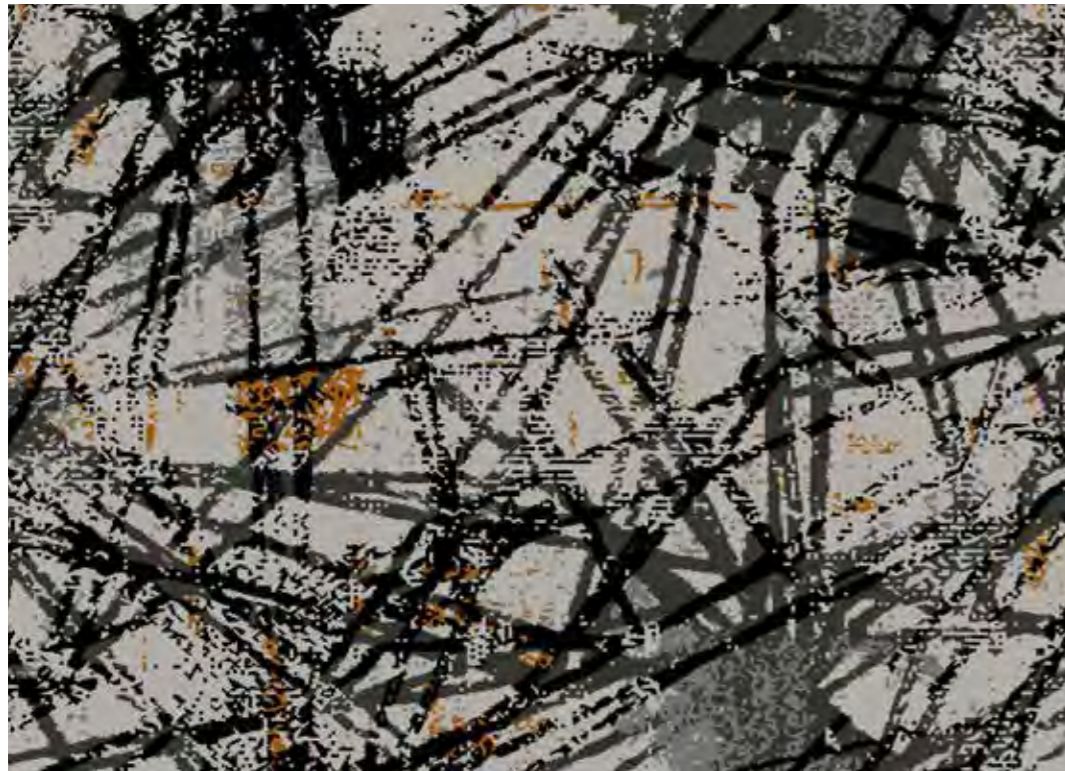
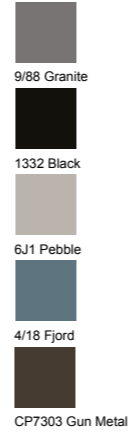
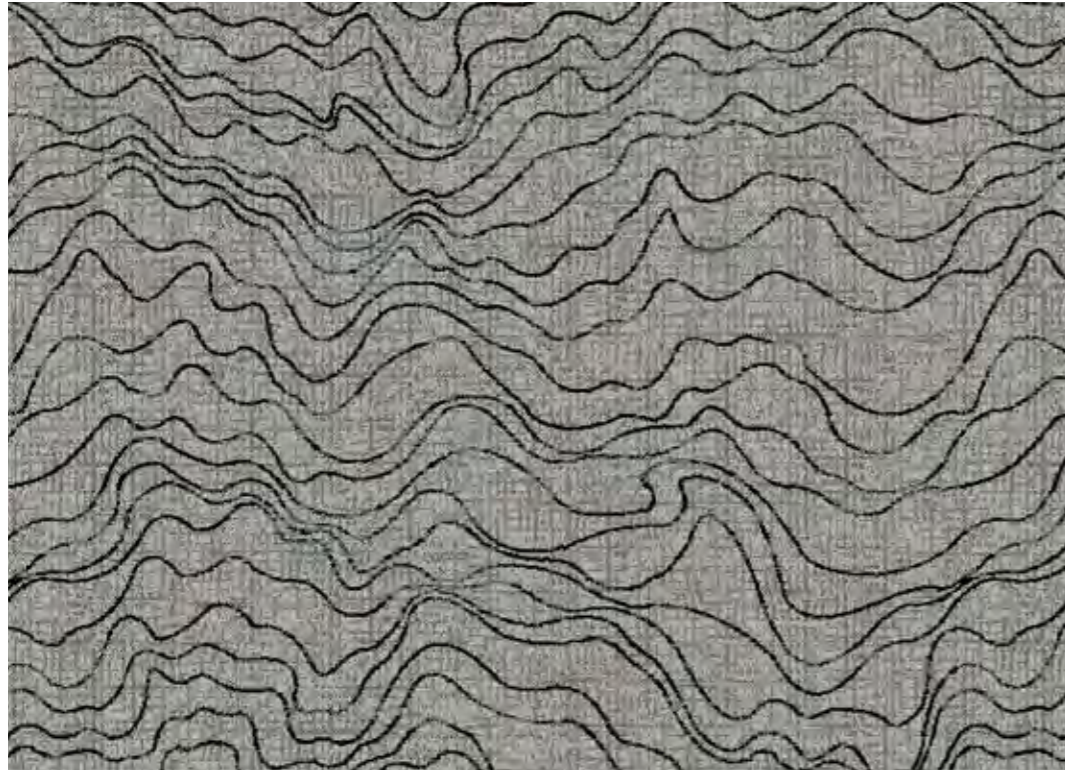
Design No: 30211-300

Pattern repeat: 1.83 SM



Wool: it takes dye beautifully, it's natural and sustainable and it's a great sound-softener and heat insulator. Add 20% nylon and you've got optimum life time value. And that's all we make our carpets from.

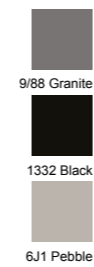
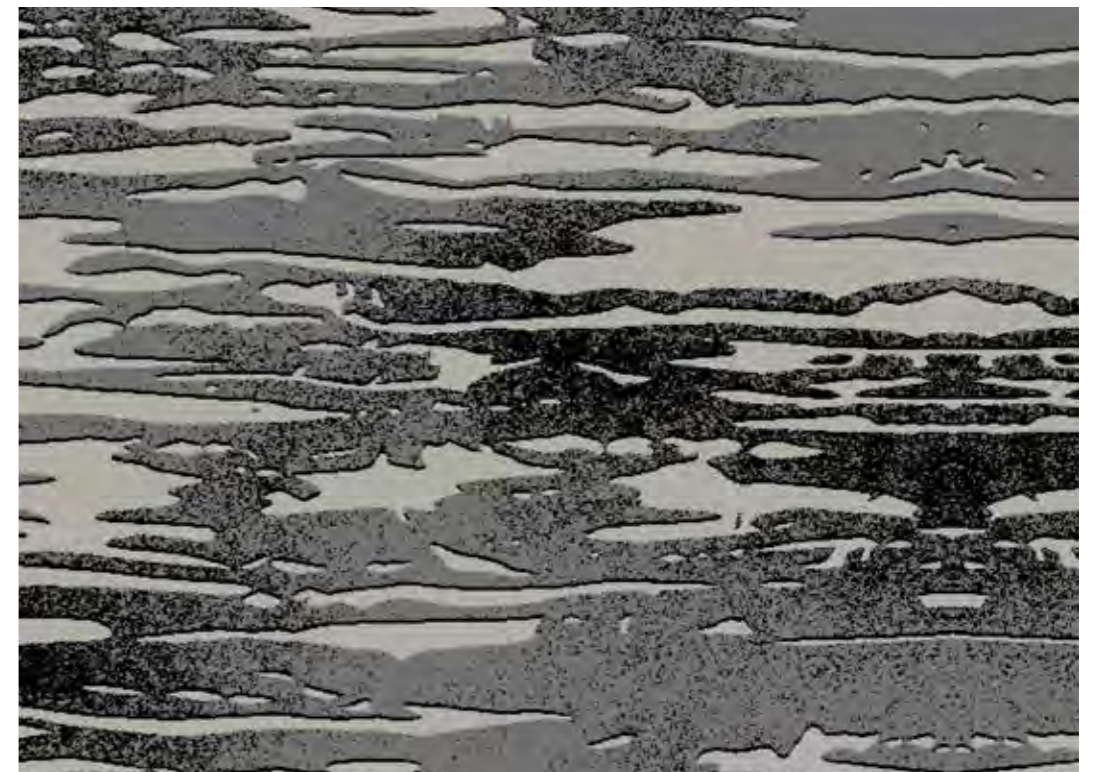
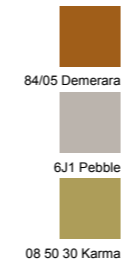
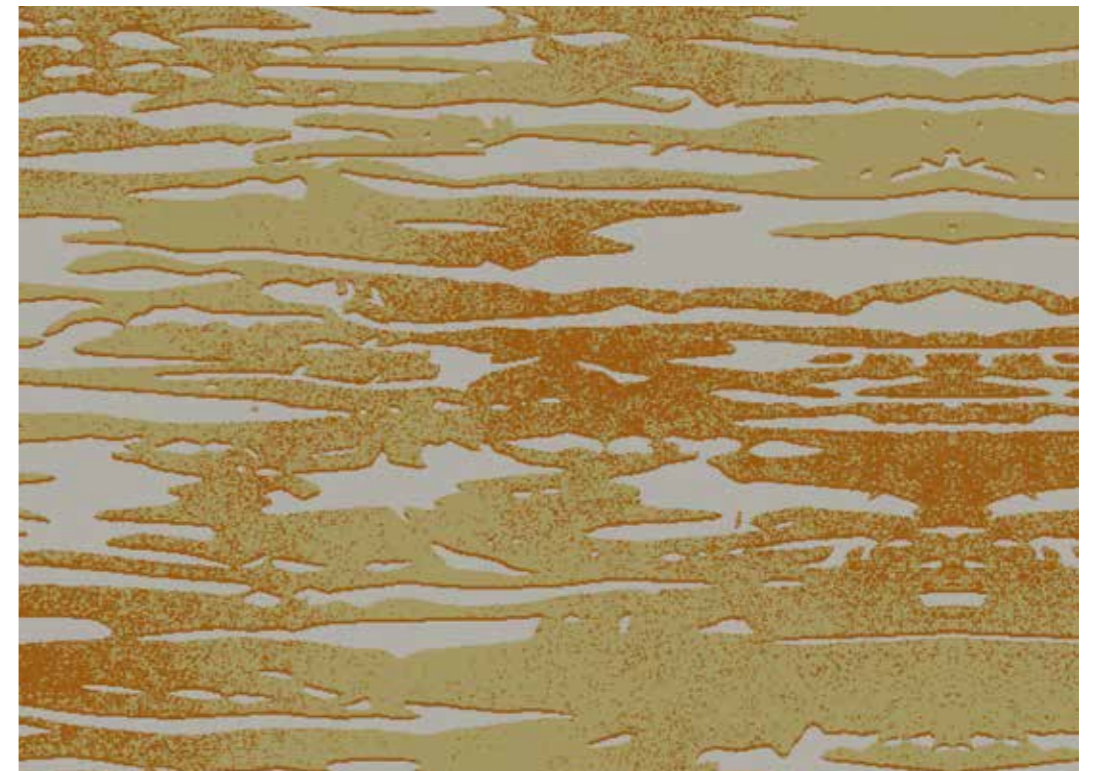
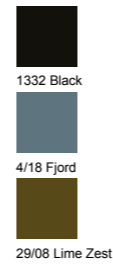
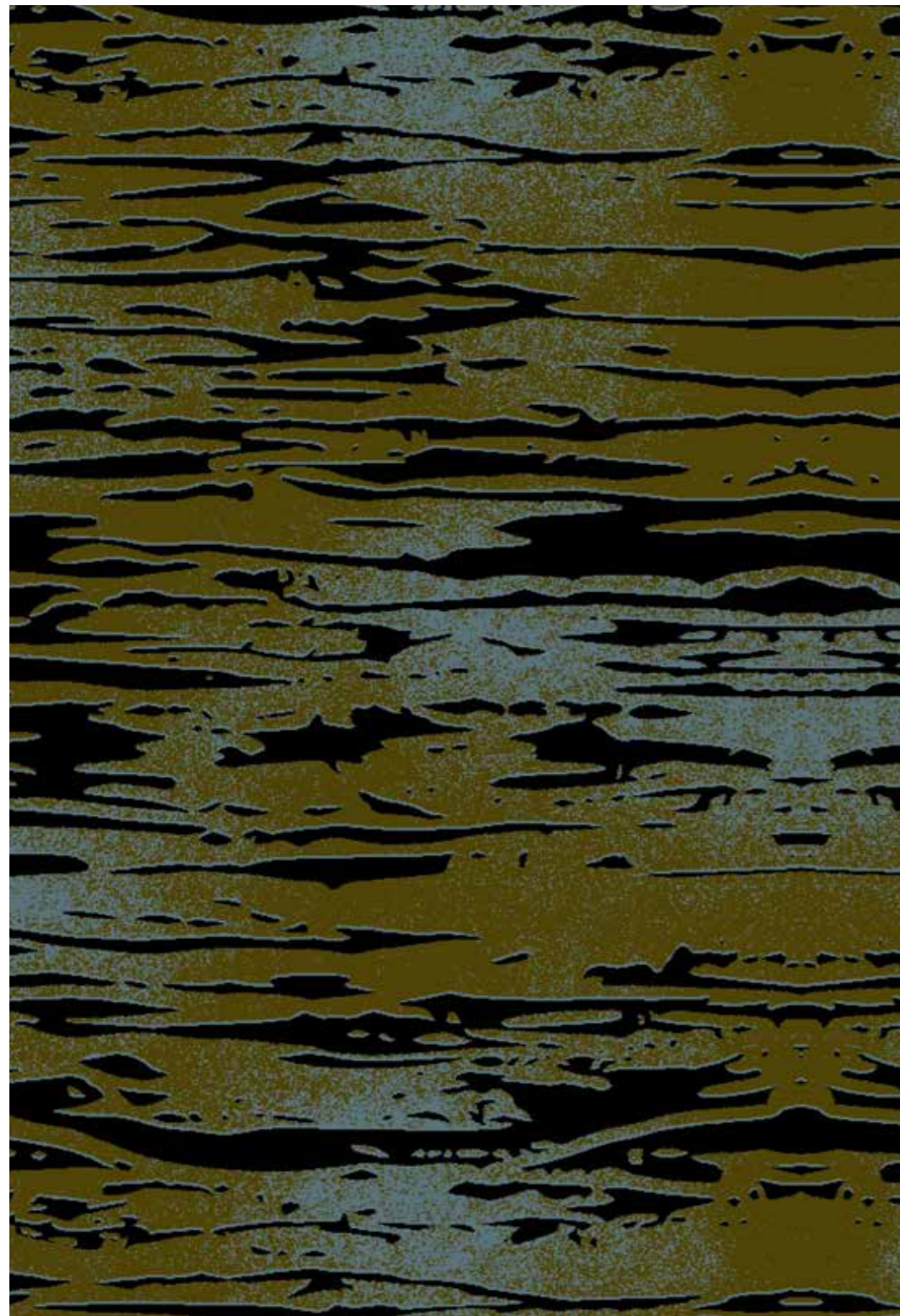






Design No: 30220-88

Pattern repeat: 2.61 SM




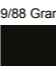
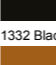



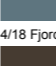


Design No: 30218-89

Pattern repeat: 2.61 SM

Design No: 30219-76

Pattern repeat: 2.61 SM



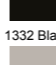


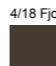


-  9/88 Granite
-  1332 Black
-  84/05 Demerara
-  6J1 Pebble
-  4/18 Fjord
-  CP7303 Gun Metal
-  08 50 30 Karma
-  IC8001 Blush
-  332/03 Burnt Copper



-  9/88 Granite
-  1332 Black
-  84/05 Demerara
-  6J1 Pebble
-  4/18 Fjord
-  CP7303 Gun Metal
-  08 50 30 Karma
-  IC8001 Blush



-  9/88 Granite
-  1332 Black
-  6J1 Pebble
-  4/18 Fjord
-  CP7303 Gun Metal
-  08 50 30 Karma

Technical _____

ENVIRONMENTAL ACCREDITATIONS

We're dependant on the sheep and the grass they graze across this country, so it just makes sense to look after our environment. In recognition of our efforts, we're ISO 14001 and BREEAM compliant.

SAIL SAFE

For marine applications, have confidence that we're Wheelmark Approved.

- IMO and US Coast Guard Certified
- IO Resolution A653 (16)
- IMO Resolution MSC 61 (67) Annex part 2 and Annex 2 IMO Resolution MSC 61 (67) Annex Part 5 and Annex Part 2

FLAMMABILITY

Our carpets have passed Radiant Panel ISP 9239-1.

PILE AND BACKING

Our yarn is woven from 80% wool and 20% nylon, providing the optimum blend of comfort, sound & heat insulation, spring-back-ability and long lifetime value. The backing's woven as an integral part of the carpet weaving process, making our carpets uncommonly durable even in heavy contract applications.

QUALITY

The number of rows per inch gives different quality of carpet, suited for differing levels of use:

- 7 row: Medium contract
- 8 row: Heavy contract
- 9 row: Heavy contract
- 10 row: Very heavy contract.

ENVIRONMENTALLY RESPONSIBLE PRODUCTION

This brochure has been responsibly produced in the UK. Printed on FSC certified paper, using fully sustainable, vegetable oil based inks and waterless printing technology powered by 100% renewable resources. The paper is carbon balanced. The print production systems are registered to ISO 14001, ISO 9001, EMAS standards and over 97% of waste is recycled.





wiltoncarpets.com

