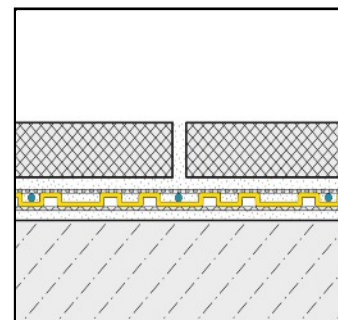
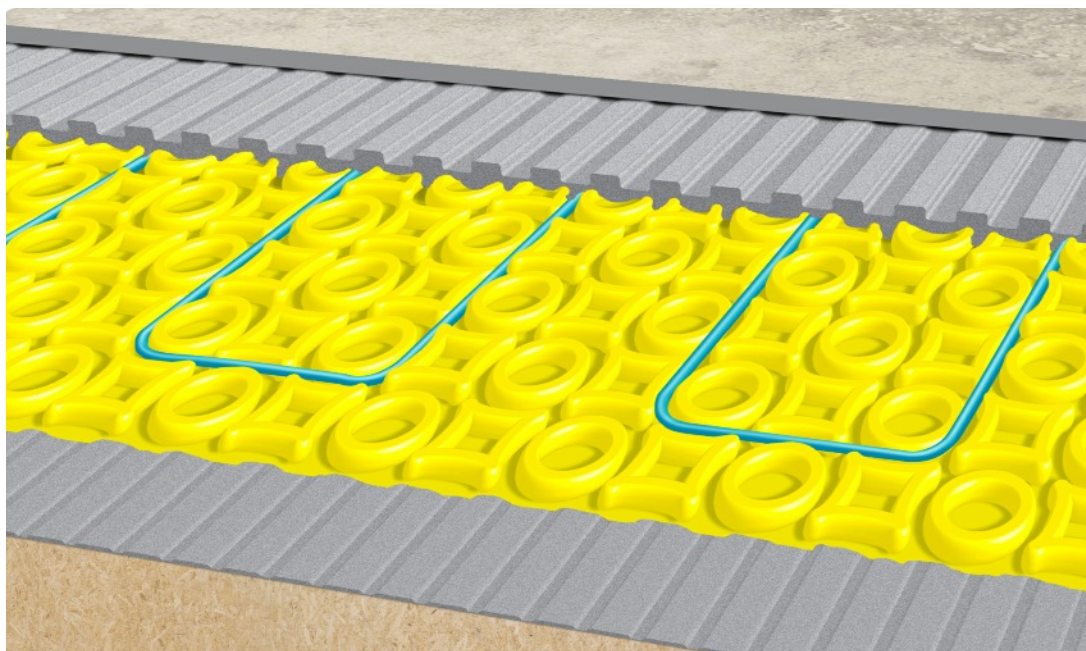


Decoupling mats for Electric Underfloor Heating - INSTALLATION INSTRUCTIONS -



GENERAL

It is of vital importance that the installation of any underfloor heating system is preplanned. Care must be taken to understand the requirements of the heating system of your choice. The heating cable layout must be preplanned to avoid any “cross-overs”. The positioning of sensors and the power supply must be predetermined.

For general room heating we recommend that cables should be installed in the CI-FH membrane with 75mm (3 notch) spacing.

DURABASE CI-FH PREPARATION

The sub floor must be free of any loose material that could impair adhesion. It must be level and able to bear weight. Any levelling must be completed before DURABASE CI-FH is installed. The adhesive should be chosen dependent on the nature of the sub floor. The adhesive must be capable of bonding to the sub floor surface and to the backing fleece of the DURABASE CI-FH mat.

Maintaining the stud pattern alignment, the DURABASE CI-FH matting sections should be cut to size to cover the desired surface. If subject to heavy traffic, it is recommended that they be protected from damage by over laying walk boards.

For most surfaces a water-based thin bed adhesive (C2 quality) can be used. The adhesive is applied to the sub floor using a serrated trowel (6 x 6mm).



Dural UK Ltd
Unit 6a, Wakefield Business Centre,
Denby Dale Road, Wakefield,
West Yorkshire, WF2 7AZ
Tel. 01924 360110
Email. info@dural.co.uk

Decoupling mats for Electric Underfloor Heating - INSTALLATION INSTRUCTIONS -

In wet areas it is advised to seal junctions between mat sections with DURABASE WP or DURABASE WPFB tape. Preformed corner sections can be used for internal and external corners.

As soon as the DURABASE CI-FH matting has been installed and the adhesive has cured, the electrical heating system can be installed to the manufactures instructions.

Tiles can be installed using a thin bed adhesive appropriate to the flooring. Practically, it is advisable to apply adhesive in one operation, embedding the heating cables in that process. Install the tiles after pre "buttering" the underside.

The tiles must be embedded in the adhesive to achieve solid bedding. The depth of the serrations on the trowel must be appropriate to the tile format. Make sure this is all done while the adhesive is still fresh and within it's "open time".

DURABASE CI-FH is not suitable for external use.

Where movement joints are required, follow professional guide lines - BS 5385. TTA guide lines or contact our technical team.

NOTES

Material: Polypropylene
Roll Length: 5m and 15m
Width: 1m
Colour: Yellow
Thickness: 6mm

Due to unavoidable trimming of the material to ensure the production pattern is maintained the width may be reduced by up to 25mm.

Suitable for heating cables of 2mm to 5mm. 3 notch system to be used with a 140-160W cable.

When used with 2mm cables, it is advisable to incorporate a 3 stud locking loop every 30cm. This ensures the cable is retained under tension.



Dural UK Ltd
Unit 6a, Wakefield Business Centre,
Denby Dale Road, Wakefield,
West Yorkshire, WF2 7AZ
Tel. 01924 360110
Email. info@dural.co.uk