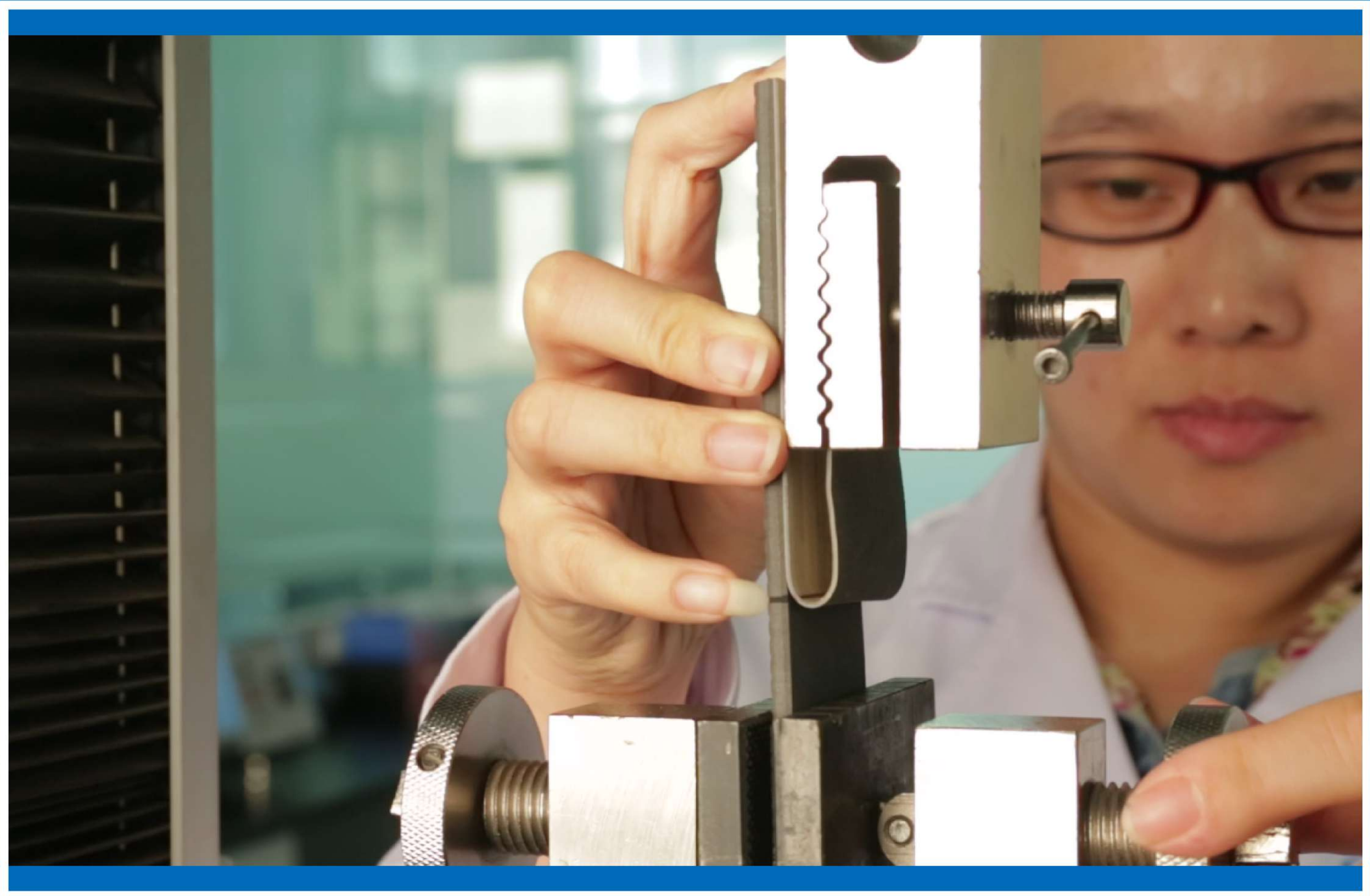




international
flooring labs



ASSURING QUALITY & CONSISTENCY



Audit



Inspect



Test



About Us

Welcome to IFL



Independent

IFL is an accredited and ISO certified flooring quality assurance and quality control company.



Industry
Experts

IFL's multinational team have a combined 230 years of flooring experience, complemented by academic qualifications and technical expertise.



Asia
Knowledge

IFL is based in Dalian, a key flooring manufacturing hub in northeast China, with inspectors stationed along the entire east coast of China and Southeast Asia. Since 2001, IFL has focused on upholding flooring industry quality standards, improving manufacturing practices and delivering peace of mind to clients worldwide.



Exceptional
Service

IFL boasts prompt and efficient systems, impartial advice and flexible packages that accommodate all clients' needs.

“Quality is not an act, but a habit”



*“Quality is remembered long
after price is forgotten”*

Audit

“An investment in knowledge pays the best interest”

Auditing factories can be a sensitive and intrusive task; however, our long-standing reputation allows us to do our work with the full support of the factories who see IFL's involvement as a beneficial service for the factories themselves as well as the clients. IFL offers the following auditing services in China, Taiwan, Vietnam, South Korea, Cambodia, Malaysia, and Indonesia:

- GFA - General Factory Audit
- CoCD - Chain of Custody Documents
- EUTR/EUDR Compliance
- CSR - Corporate Social Responsibility

Auditing manufacturers of:

Laminate
flooring



Solid wood
flooring



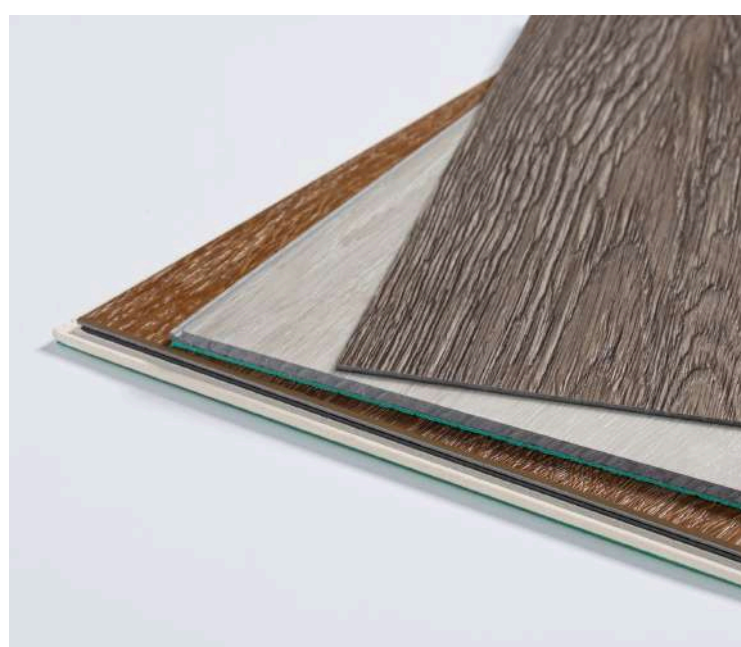
Engineered wood
flooring



Bamboo
flooring



Resilient
flooring



Decking



Underlay and
accessories



Wall & ceiling
panels



Inspect

IFL has certified roaming and resident inspectors stationed along the entire east coast of China and Southeast Asia who on a daily basis inspect flooring products and accessories in designated factories.

Inspections are structured to cover specific client needs and can include raw material, mid-production, pre-shipment and container loading inspections.

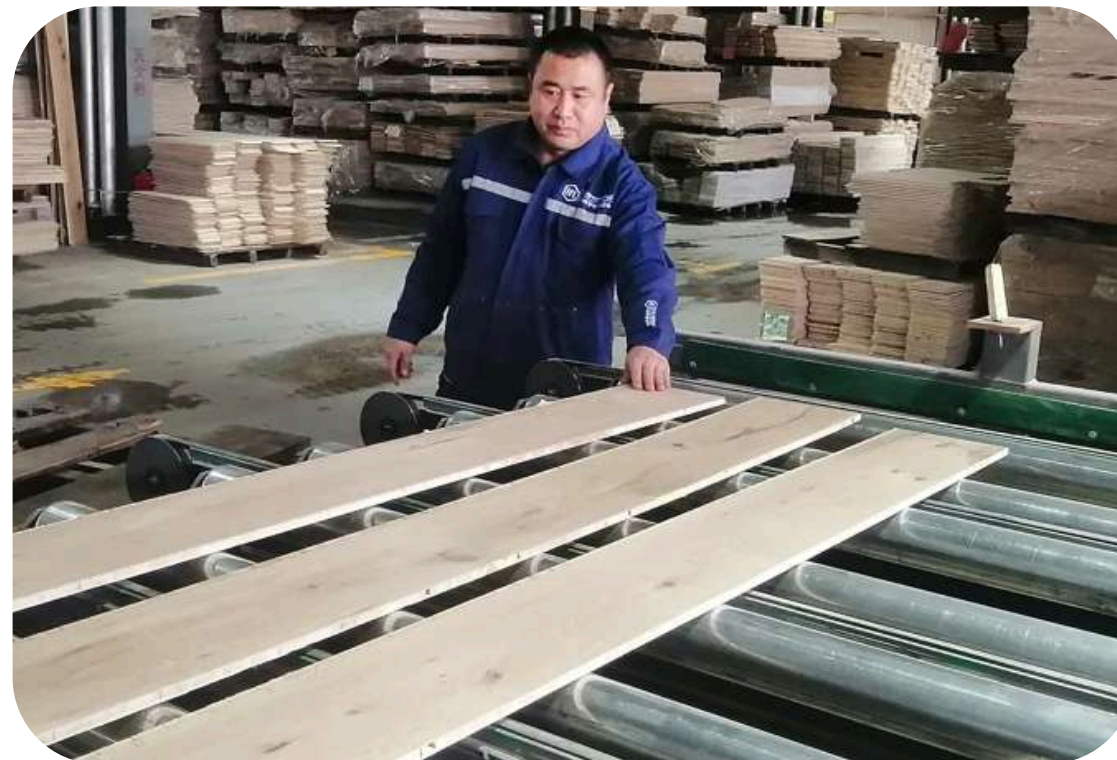
Colour matching of products with master samples is a crucial step in flooring inspection. Therefore, all IFL inspectors are colour competency qualified to international standards to ensure colour-check are accurately performed.

With each inspection, IFL accumulates valuable experience and knowledge which is fed back into the company systems to help improve production, products, and services.

Raw Material



Mid-production



Pre-shipment

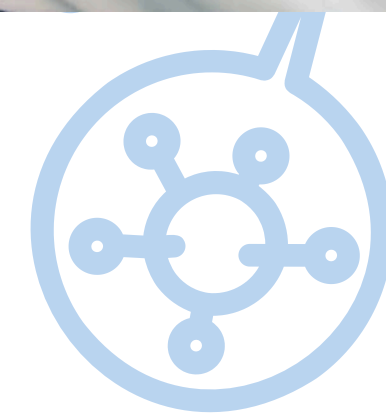


Container Loading



Inspection Procedure

1. Client authorises the factory to coordinate with IFL for inspection date.
2. Inspection results are communicated within 24 hours to the client along with comments and feedback.
3. Completed inspection reports are promptly emailed to the clients along with inspection pictures.



Test

IFL operates from a state-of-the-art flooring laboratory, which uses world class equipment and performs over 150 flooring tests to National Standards of Europe (EN), USA (ASTM), Japan (JAS), China (GB) and private standards as and when clients require.

Accredited lab operators are continuously trained to stay up to date with latest industry developments to perform a wide range of physical and chemical tests that monitor quality aspects of flooring products which are most likely to fall out of tolerance during production.

Few examples of such tests would be:

FORMALDEHYDE TEST

Exposure to formaldehyde can cause various health issues, including respiratory irritation, allergies and in some cases, more severe health effects. Testing for formaldehyde can help determine if levels are within safe limits to protect occupants health.



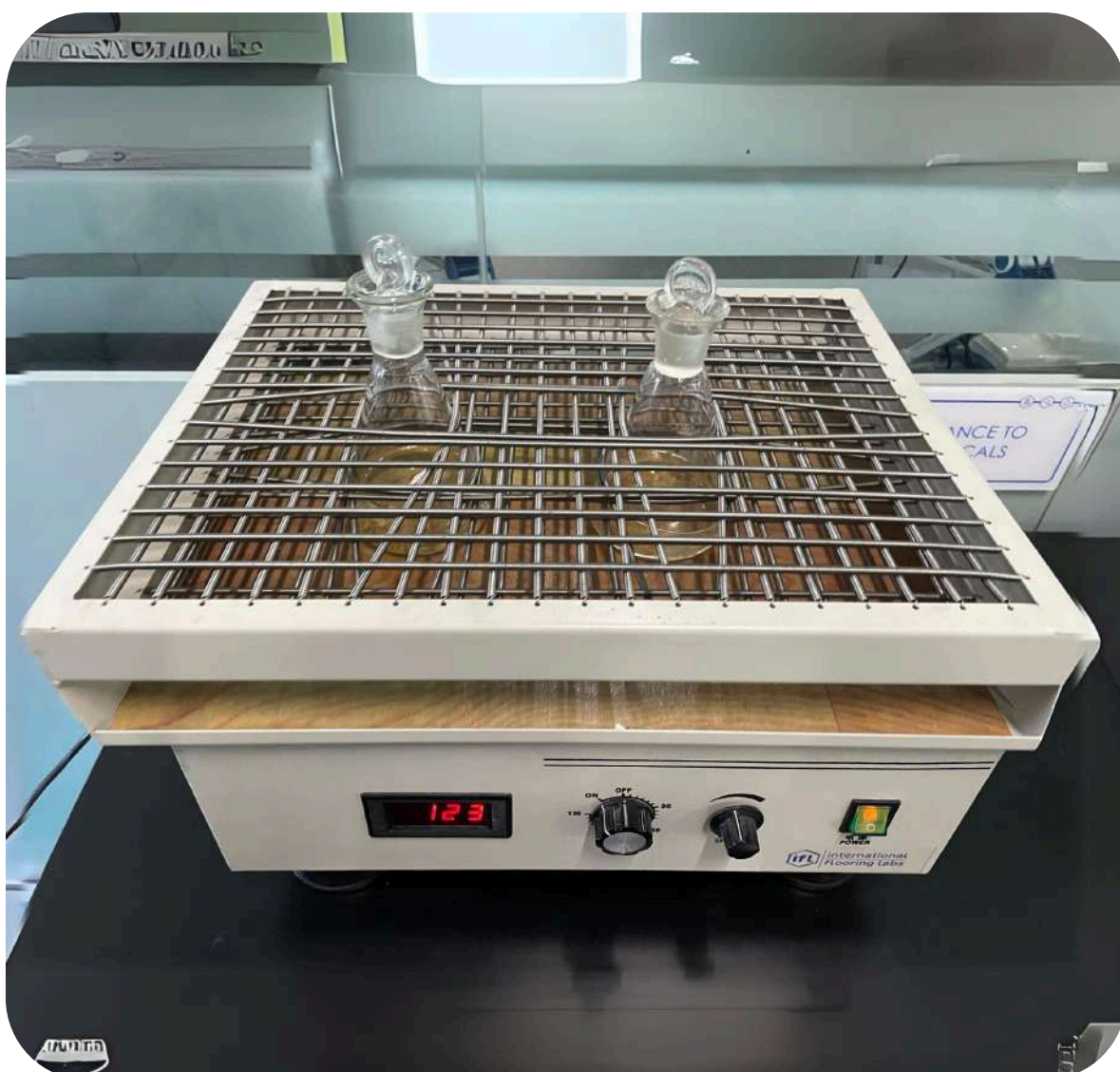
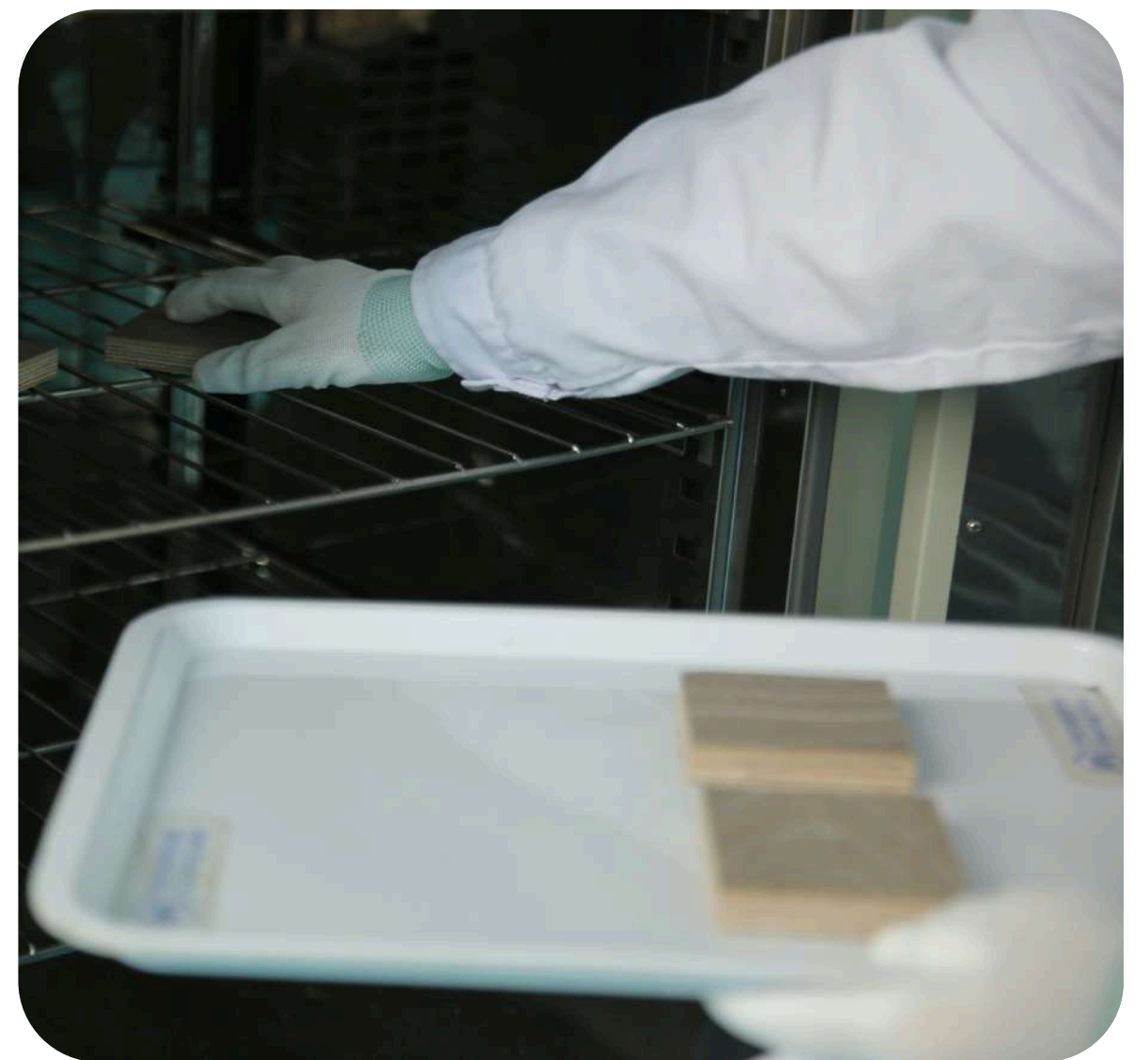


DELAMINATION TEST

Delamination refers to the separation of layers within a flooring material, which can compromise its structural integrity and durability. Testing for delamination helps ensure that the flooring meets quality standards before installation, reducing the risk of premature failure.

MOISTURE CONTENT TEST

A flooring moisture content test is crucial for ensuring proper installation, preventing moisture-related problems, maintaining quality, and prolonging the lifespan of the flooring.



SPECIES IDENTIFICATION TEST

Certain wood species may be protected or regulated due to environmental concerns such as deforestation or endangered species protection. Conducting species identification tests helps ensure compliance with environmental regulations and responsible sourcing practices.

Test Report

- Tests and Reports are normally finalized between 3 to 10 days from the date of receipt of samples.
- Test samples are selected, prepared, cut and packed to ISO standards.



Services



Factory audits can be commissioned at any time as a stand alone service. For Quality Control package of goods being shipped, IFL offers 3 tailored-made service options:

1. INSPECTION & TESTING SERVICE

- Support the definition of a reasonable quality standard.
- Perform as many inspections as needed for the same container.
- Perform as many tests as needed for the same container.
- Provide detailed inspection report, inspection pictures (and if required, inspection video) for every container.
- Provide detailed test report (tested to your specified standard).
- Provide a clear indication of whether the goods comply with contract specifications and agreed standards.
- Absorb all travel costs.
- Retest for free in case of any quality complaints or claims to help determine presence of a manufacturing defect.
- Work with partners such as coating, profile or glue suppliers to find solutions for recurrent problems.



2. INSPECTION ONLY SERVICE

- Support the definition of a reasonable quality standard.
- Perform as many inspections as needed for the same container.
- Provide detailed inspection report, inspection pictures (and if required, inspection video) for every container.
- Provide detailed test report (tested to your specified standard).
- Provide a clear indication of whether the goods comply with contract specifications and agreed standards.
- Absorb all travel costs.

3. TESTING ONLY SERVICE

- Support the definition of a reasonable quality standard and the selection of relevant tests.
- Perform pre-determined tests on samples received from factory/ inspectors.
- Provide detailed test report.
- Provide a clear indication of whether the tests conform to the specified quality standards.





ASSURING QUALITY & CONSISTENCY

For more information, please do not hesitate to contact us.

#12 Anshan Street, 2nd floor, Development Zone,
Dalian, Liaoning Province, China

Email: inquiries@iflooringlabs.com

Tel: +86 0411 8853 6014

www.iflooringlabs.com



Scan QR to visit website