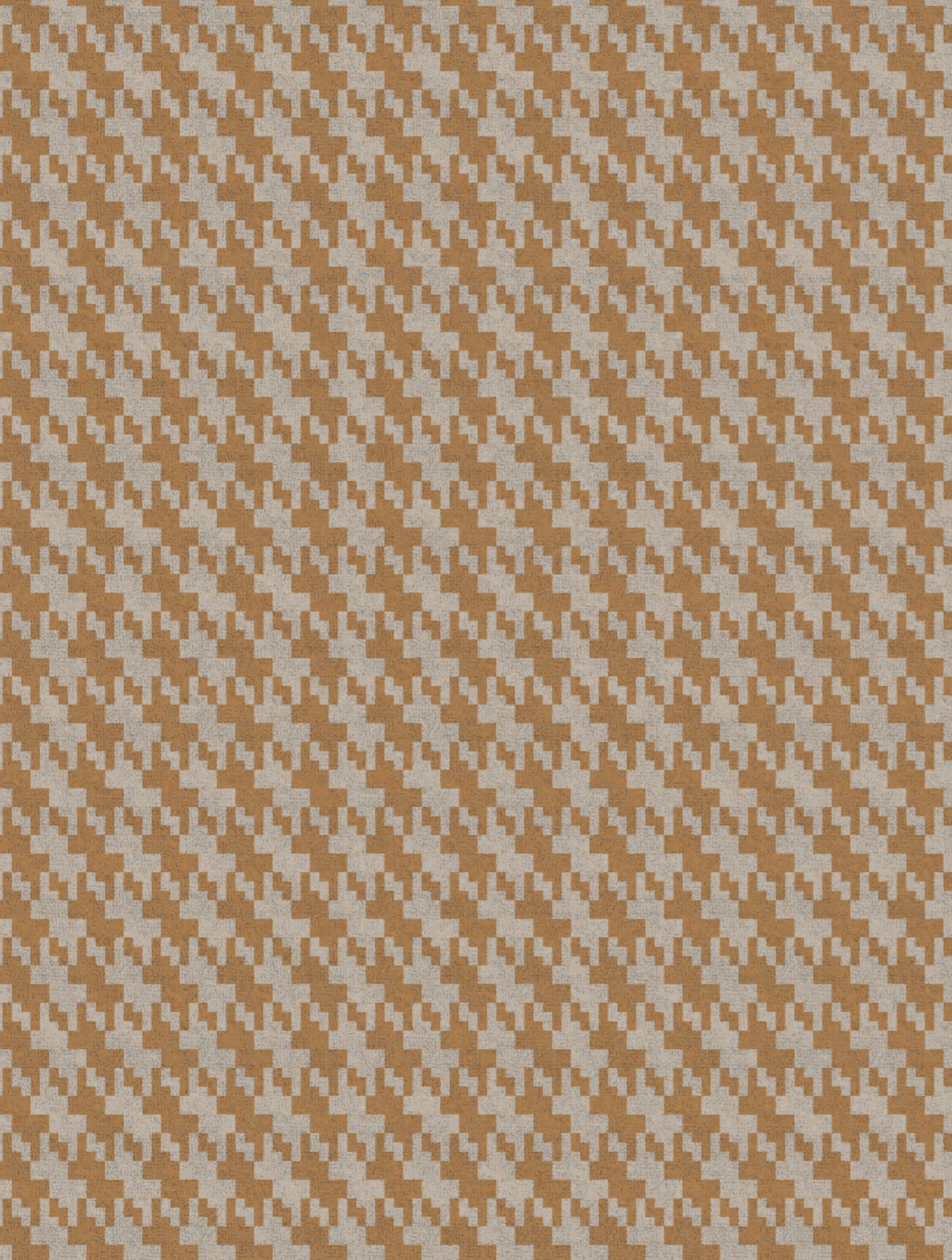




Wilton Carpets

**TUFTED
COLLECTION**



TUFTED GRAPHICS

CONTENTS

Chesil
Tailored Collection
Berwick
Heritage
Cadis

Our collection of tufted carpets feature cool, contemporary, small-scale patterns, designed to look great in smaller-spaces, hotel guestrooms, corridors, dining areas and commercial office areas.

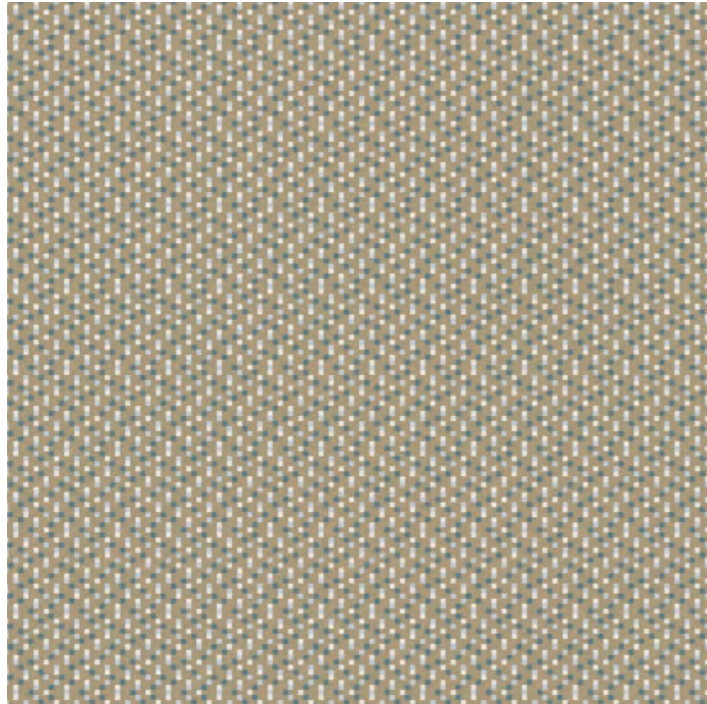
This brochure details our complete tufted collection, all stocked, apart from Cadis which is a bespoke product and subject to a minimum order quantity of 300 square metres. The other ranges don't have a minimum order quantity unless you'd like to customise the colours; do get in touch with our design team if you'd like to discuss this flexible solution for your design scheme. If customised, the other ranges are then subject to a minimum order quantity of 300 square metres.

They are all constructed with the optimal commercial balance of 80% wool/20% nylon yarn, giving luxurious underfoot comfort, and great lifetime value.

Get in touch to discuss your project.

sales@wiltoncarpets.com
01722 746 000

Chesil



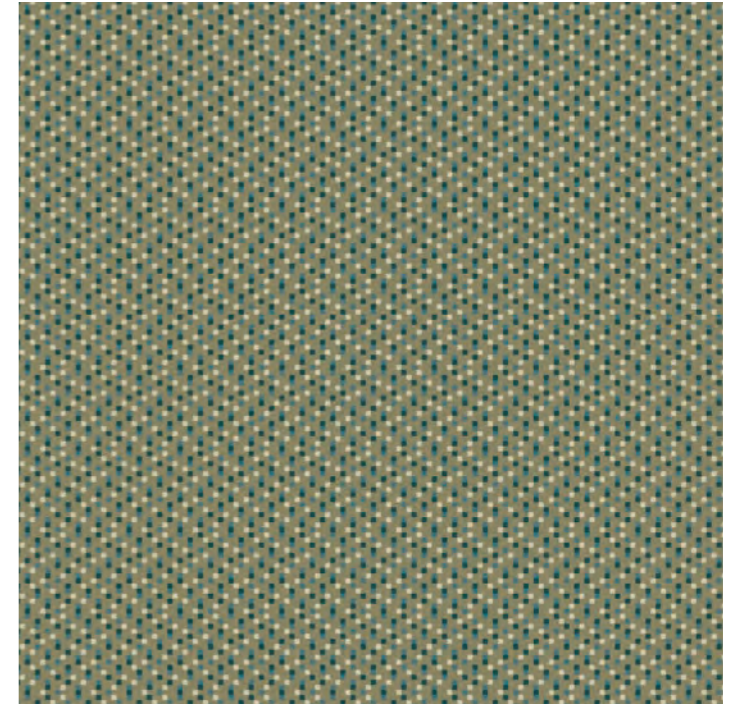
Design 50282-360
Barnacle
Repeat 0.05m SM

- 131/90 X1C
- 7605 X4P
- 135/00
- 7/14 23L



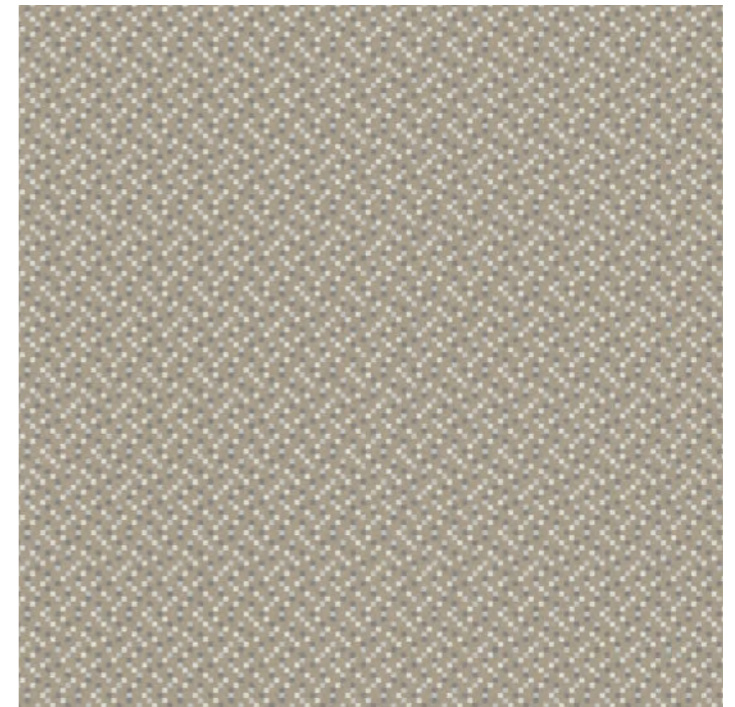
Design 50282-361
Coral
Repeat 0.05m SM

- 18/21 20B
- 9/03 18J
- 135/00
- S1157 X3Q



Design 50282-362
Seaweed
Repeat 0.05m SM

- 82/13 W
- 8/03 12N
- 150/90 X5B
- 21/21 X4Q

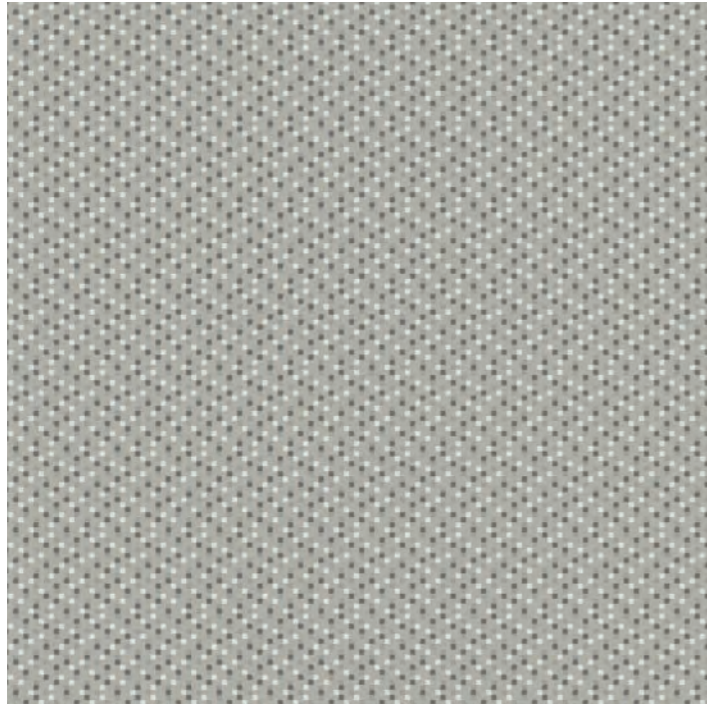


Design 50282-363
Driftwood
Repeat 0.05m SM

- 20/98 12G
- 102/03 30A
- 92/06 30M
- 99/13

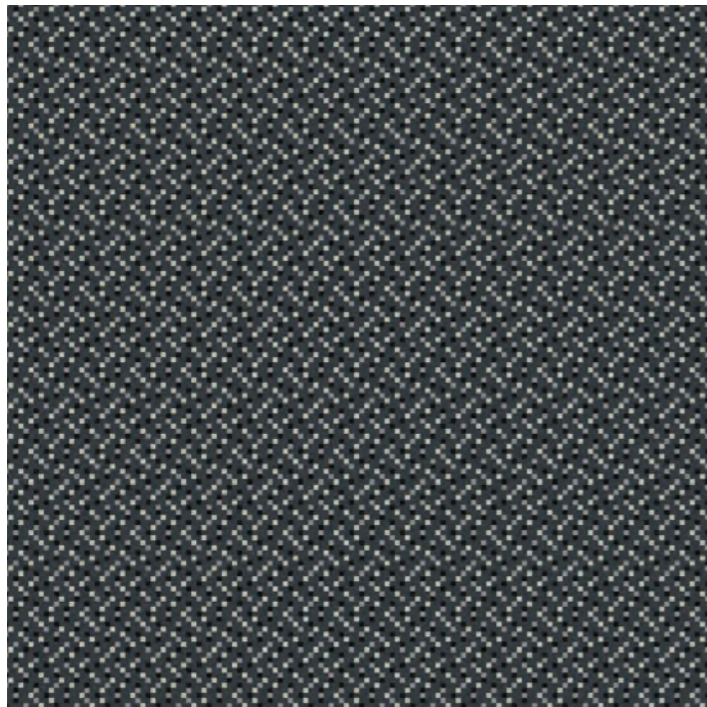


Chesil



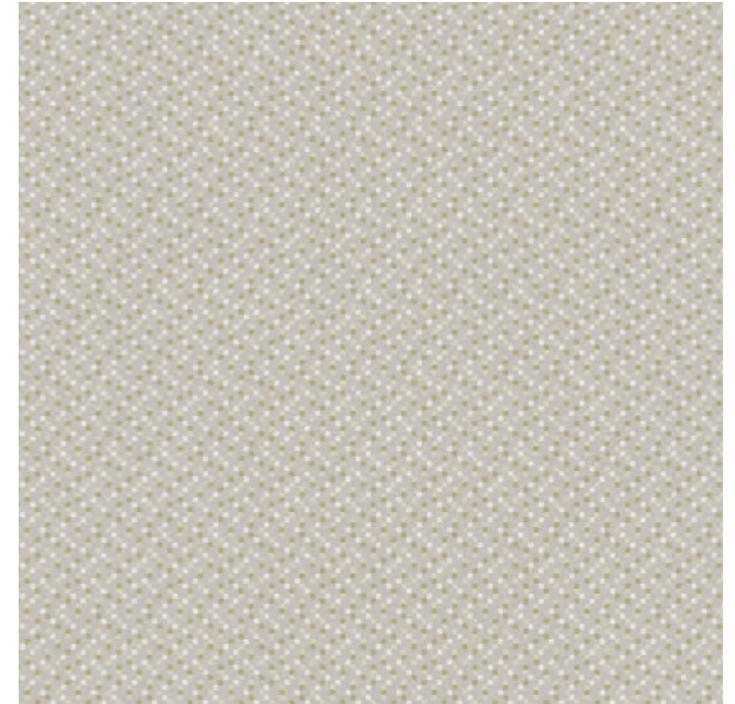
Design 50282-364
Pebble
Repeat 0.05m SM

- 42/11 24A
- 88/16 22D
- 9/15 24M
- 74/16 22G



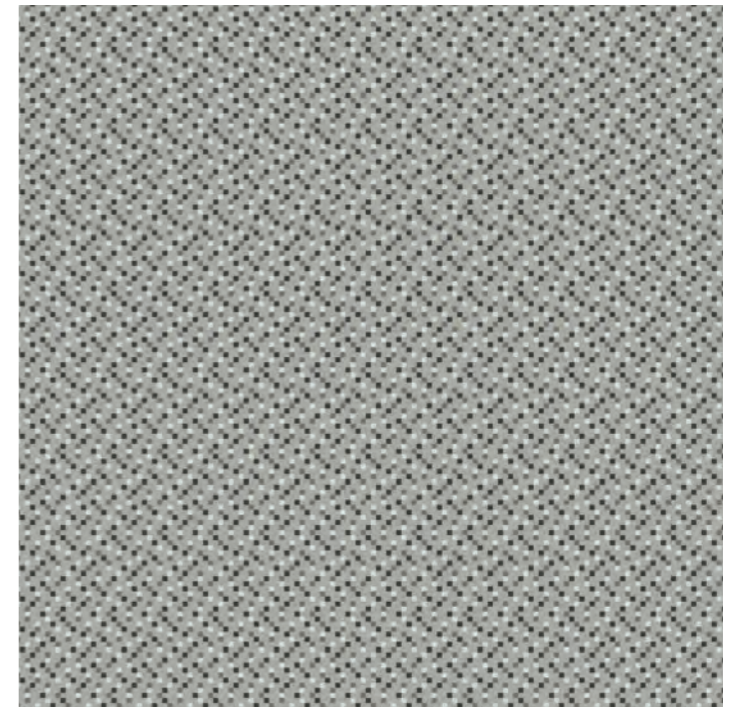
Design 50282-365
Ammonite
Repeat 0.05m SM

- CP7382 17J
- 18/11 18K
- 150/83 15G
- 89/16 22E



Design 50282-366
Dune
Repeat 0.05m SM

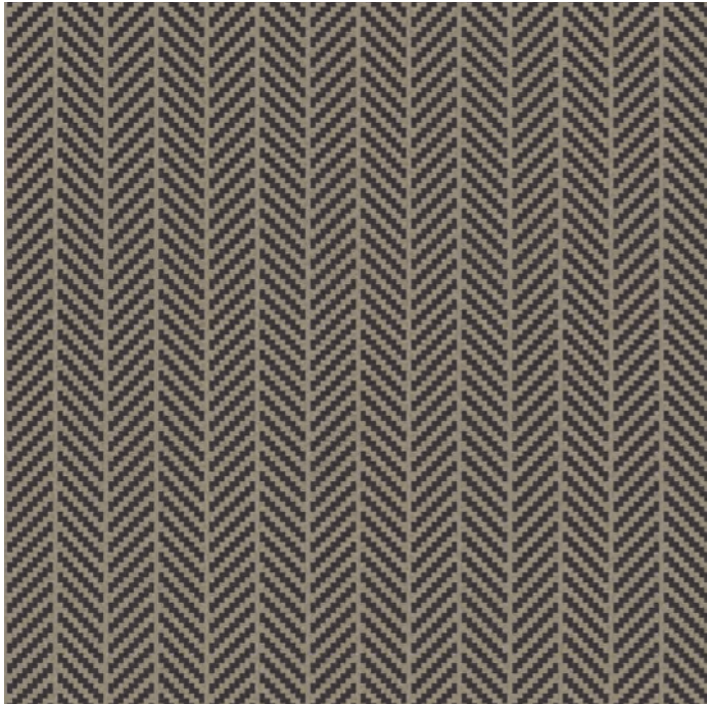
- 99/13
- 135/00
- 4/20
- IC130



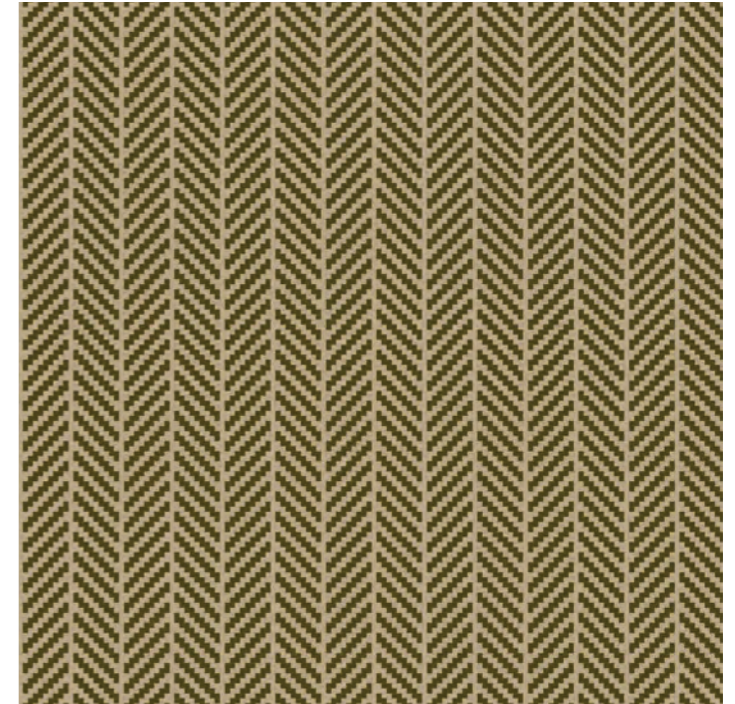
Design 50282-367
Gull
Repeat 0.05m SM

- 312/87 18L
- 64/10 X3H
- 13/17 22J
- 43/16 22C

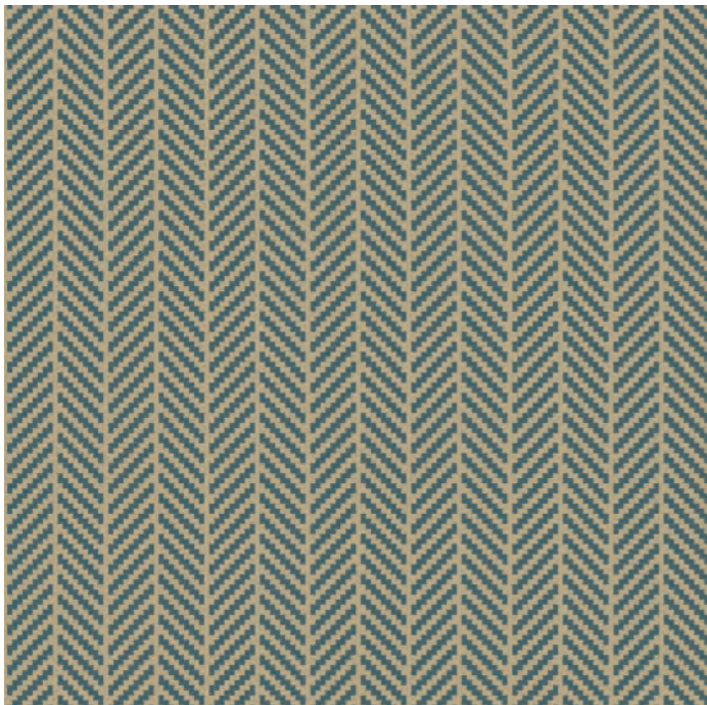
The Tailored Collection Herringbone



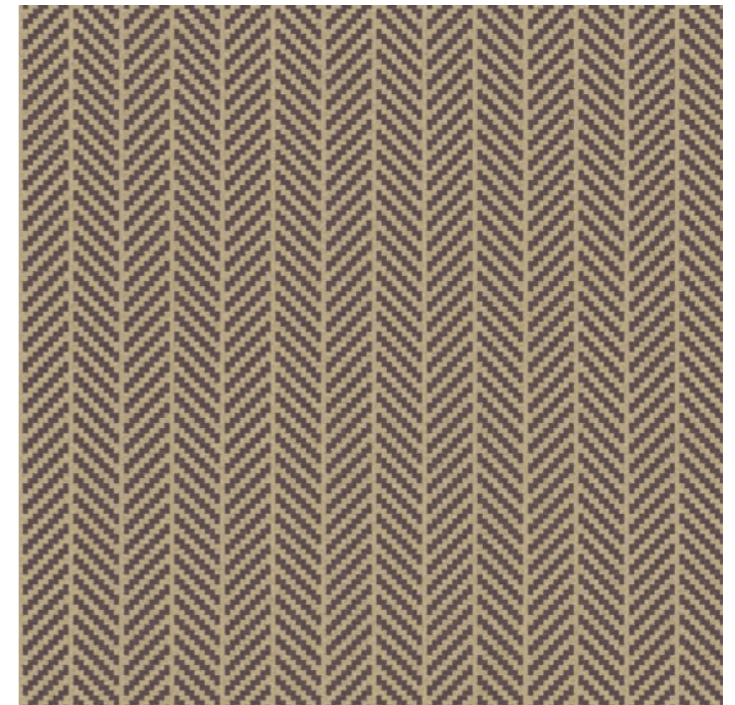
Design 50265-340
Morgan
Repeat 0.01m SM
● 458/87 12C CY
● 680/88 17M CY



Design 50265-342
Everest
Repeat 0.01m SM
31/08 CY ●
29/08 CY ●

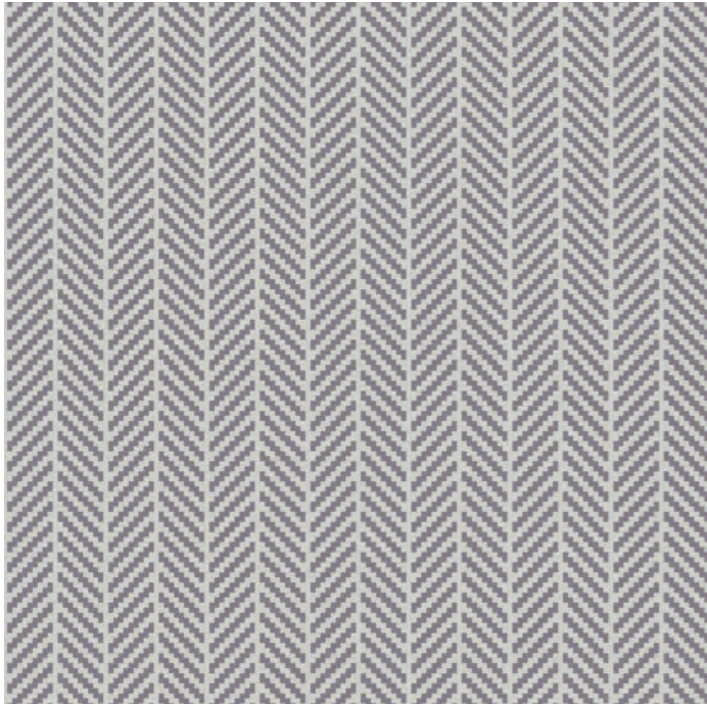


Design 50265-341
Strauss
Repeat 0.01m SM
● 31/08 CY
● 151/90 CY



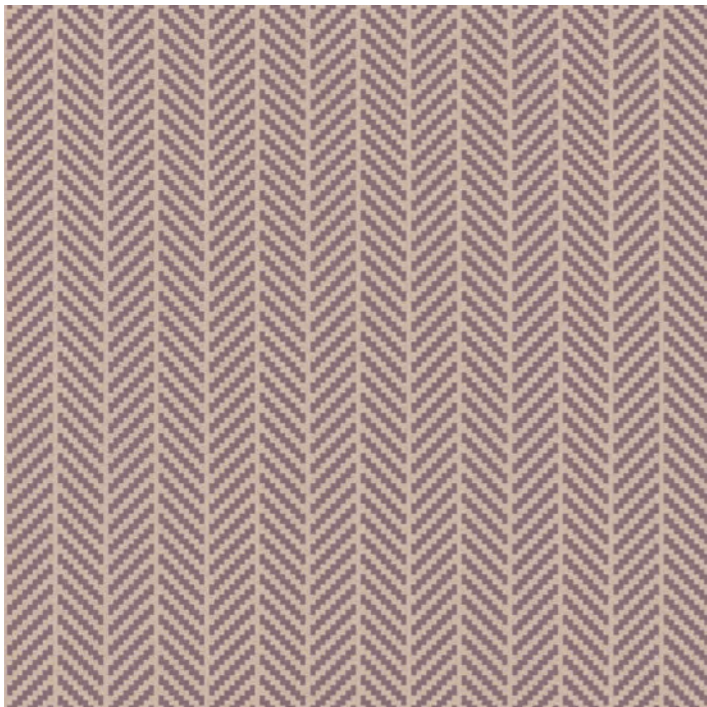
Design 50265-343
Davis
Repeat 0.01m SM
31/08 CY ●
90/07 CY ●

The Tailored Collection Herringbone



Design 50265-344
Fielding
Repeat 0.01m SM

- 677/88 23D CY
- 38/13 23F CY

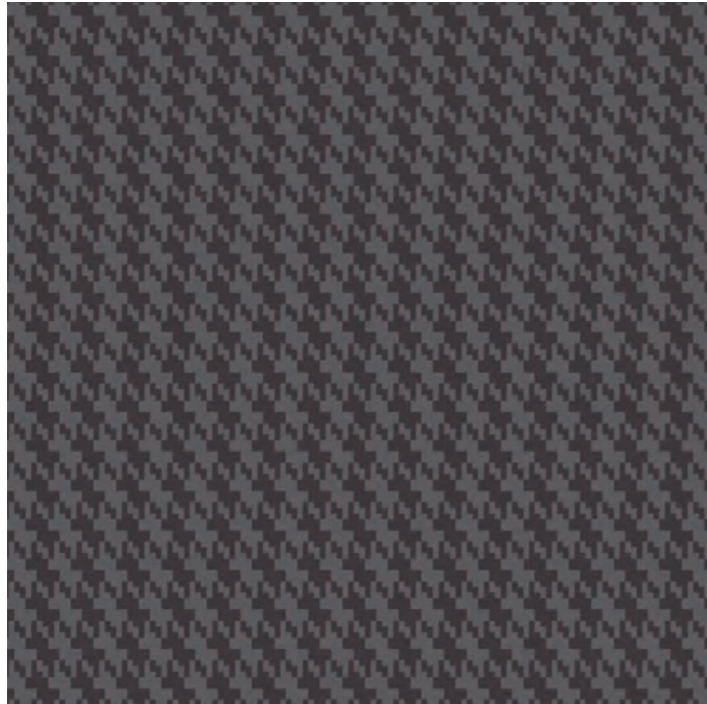


Design 50265-345
Poole
Repeat 0.01m SM

- 93/07 11M CY
- 65/85 23C CY

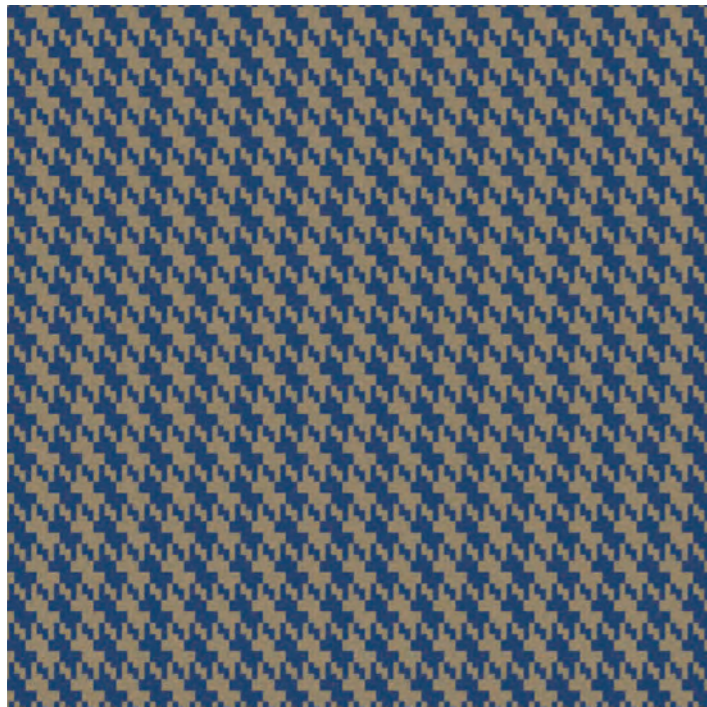


The Tailored Collection Houndstooth



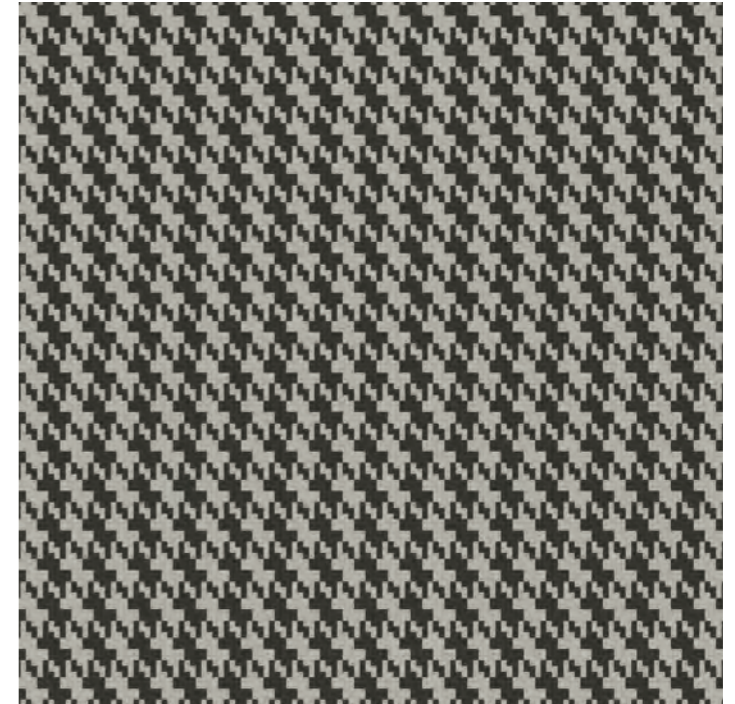
Design 50266-350
Huntsman
Repeat 0.02m SM

- 323/03 E013 CY
- 680/88 17M CY



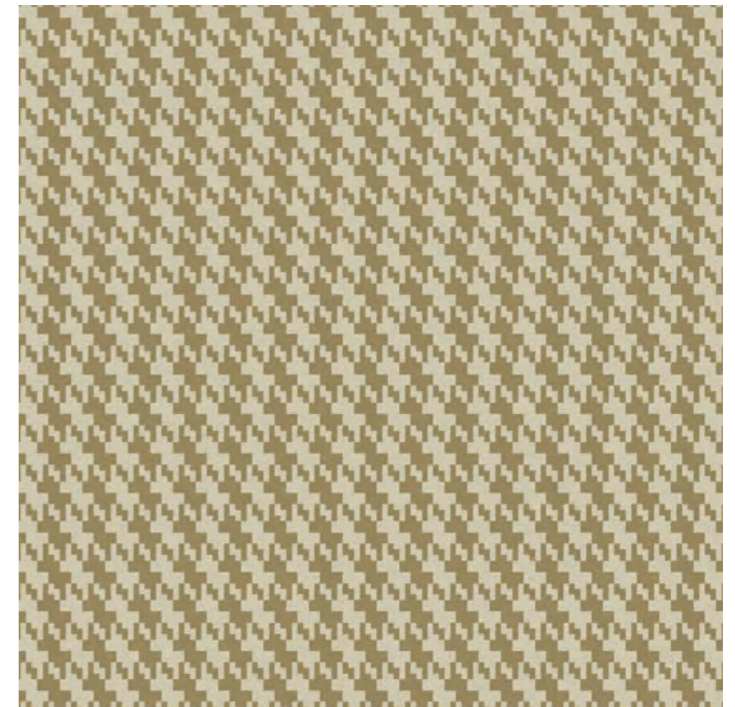
Design 50266-351
Barrie
Repeat 0.02m SM

- 187 23K CY
- 44/07 18G CY



Design 50266-352
Kilgour
Repeat 0.02m SM

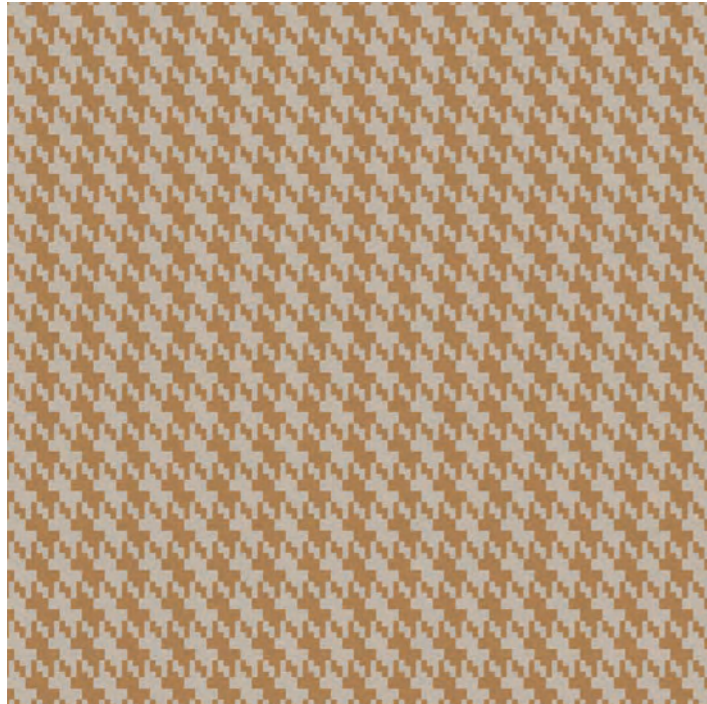
- 6J1 17L CY
- CP7303 17N CY



Design 50266-353
Sexton
Repeat 0.02m SM

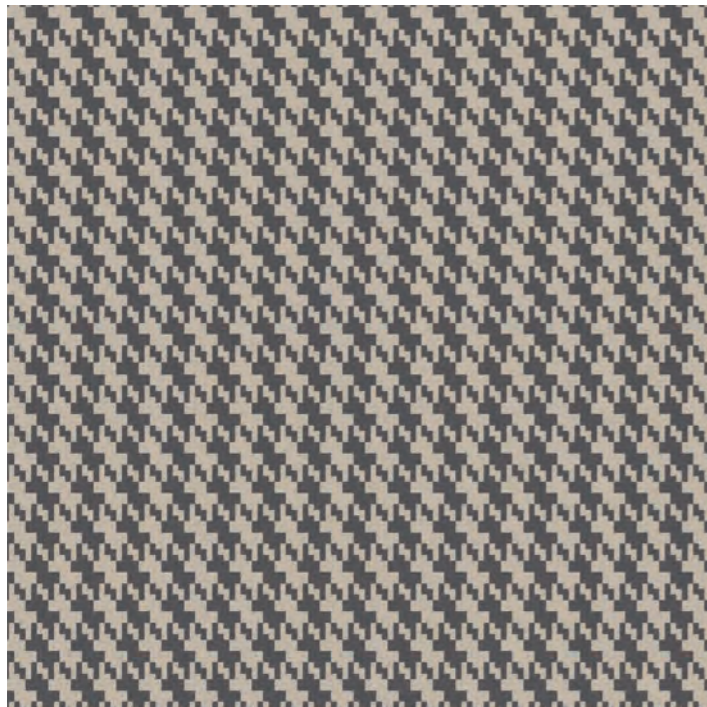
- 3/11 X1A CY
- Y1921 24B CY

The Tailored Collection Houndstooth



Design 50266-354
Anderson
Repeat 0.02m SM

- 57/85 23L CY
- 15/15 12F CY



Design 50266-355
Sheppard
Repeat 0.02m SM

- 57/85 23L CY
- 8137 18K CY



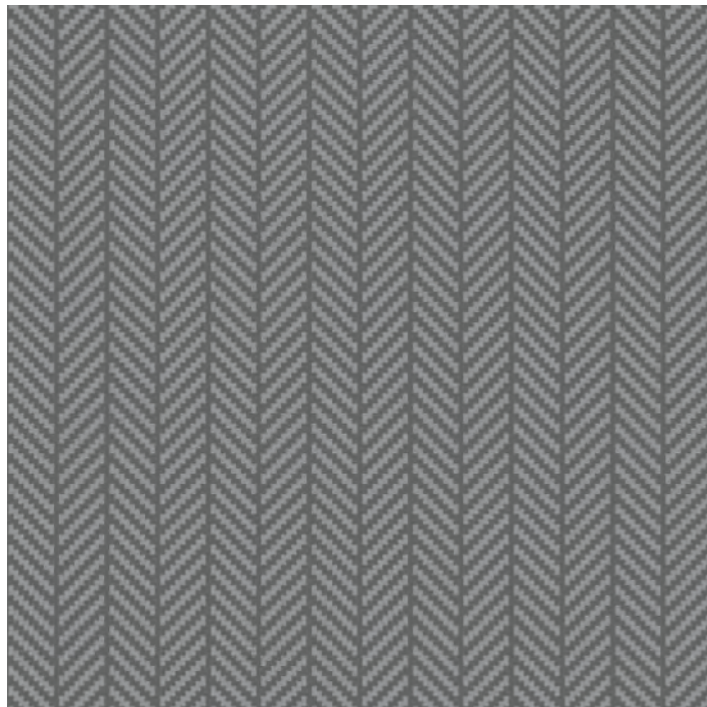
Berwick



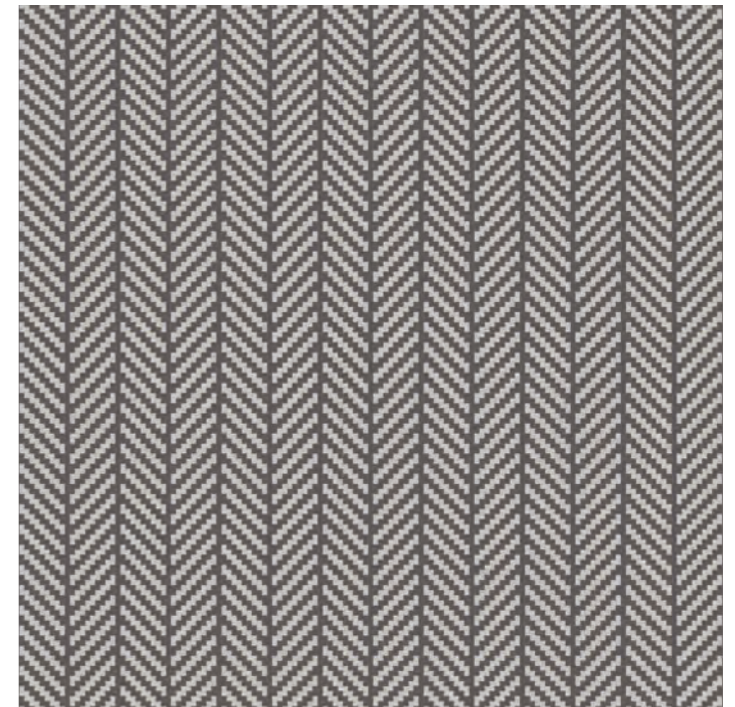
Design 50220-252
Wark
Repeat 0.01m SM
● 20/08 180
● 88/07



Design 50220-258
Swinton
Repeat 0.01m SM
● 9/07 18F ●
● IC5401 ●

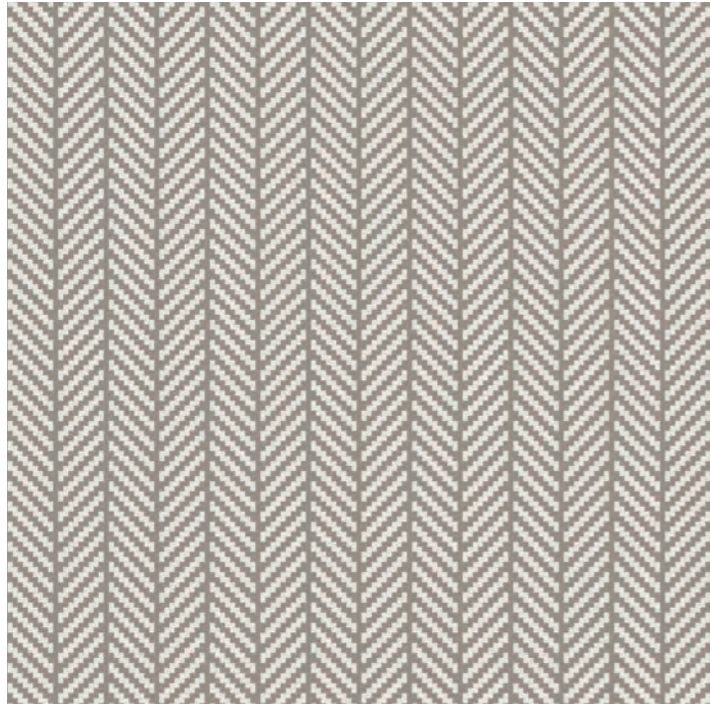


Design 50220-253
Carham
Repeat 0.01m SM
● 131/84 23I
● 132/86 F014



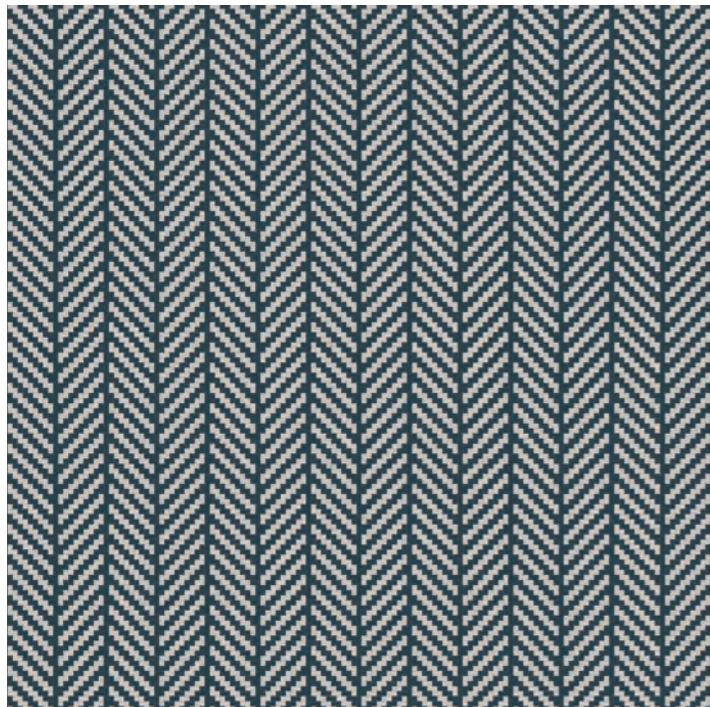
Design 50220-260
Allerdean
Repeat 0.01m SM
● 90/07 ●
● 99/13 ●

Berwick



Design 50220-261
Whitsome
Repeat 0.01m SM

- 103/90
- 135/00

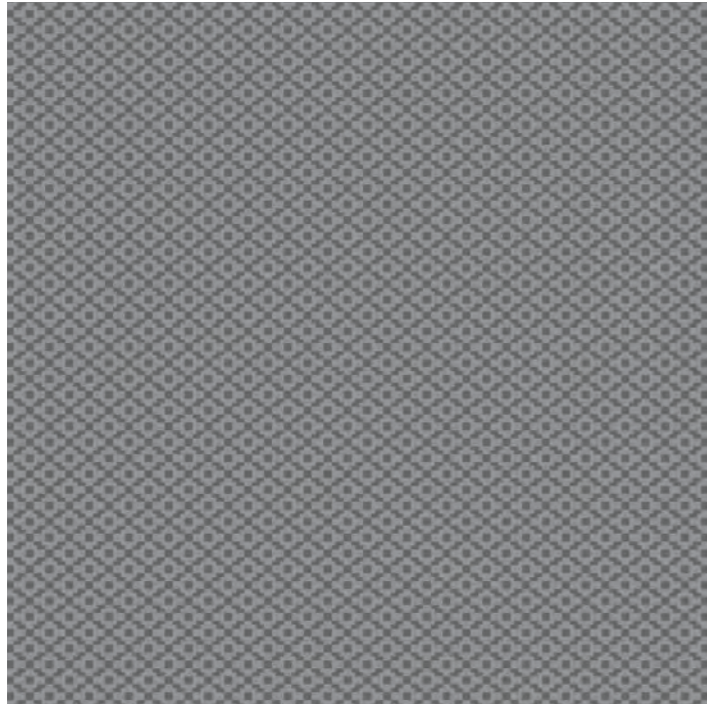


Design 50220-262
Branxton
Repeat 0.01m SM

- 72757
- 99/13

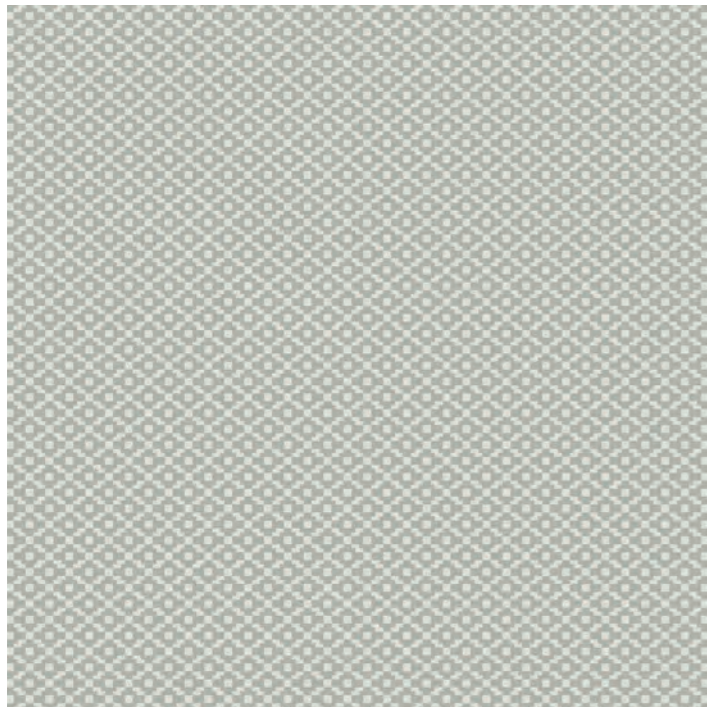


Heritage



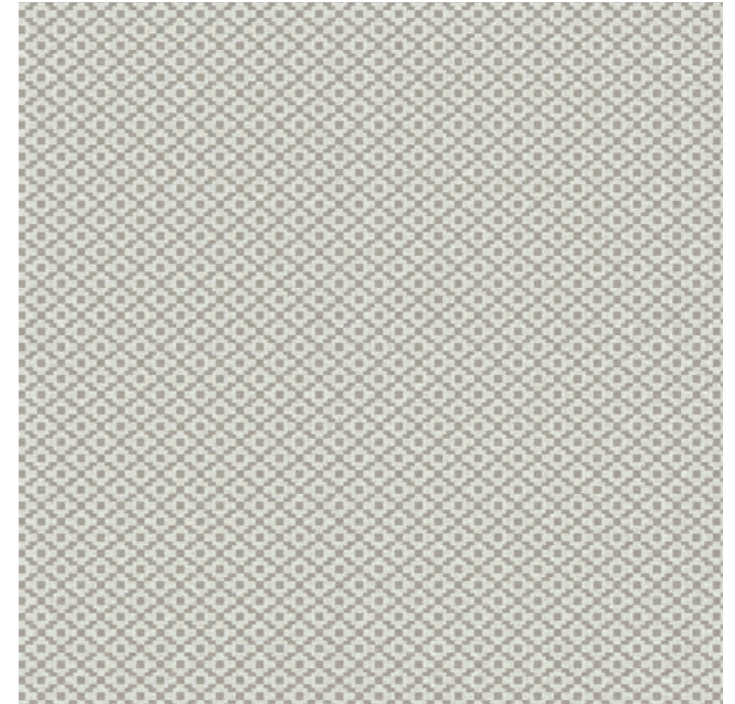
Design 50119-201
Castlebourne
Repeat 0.03m SM

- 131/84 23I
- 132/86 F014



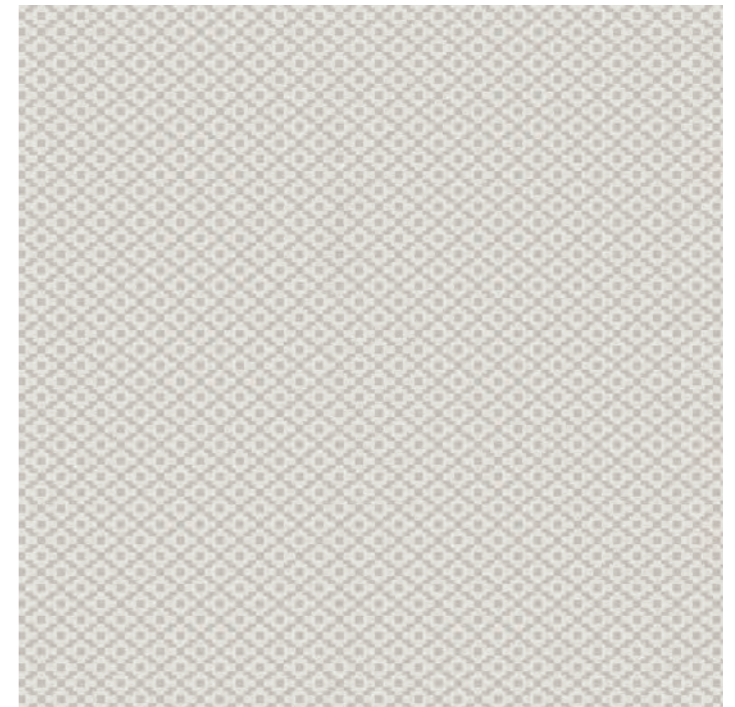
Design 50119-208
Bath
Repeat 0.03m SM

- 3/11 X1A
- 72/16 22E



Design 50119-209
Blaise
Repeat 0.03m SM

- 9/15 24M ●
- 3/11 X1A ●

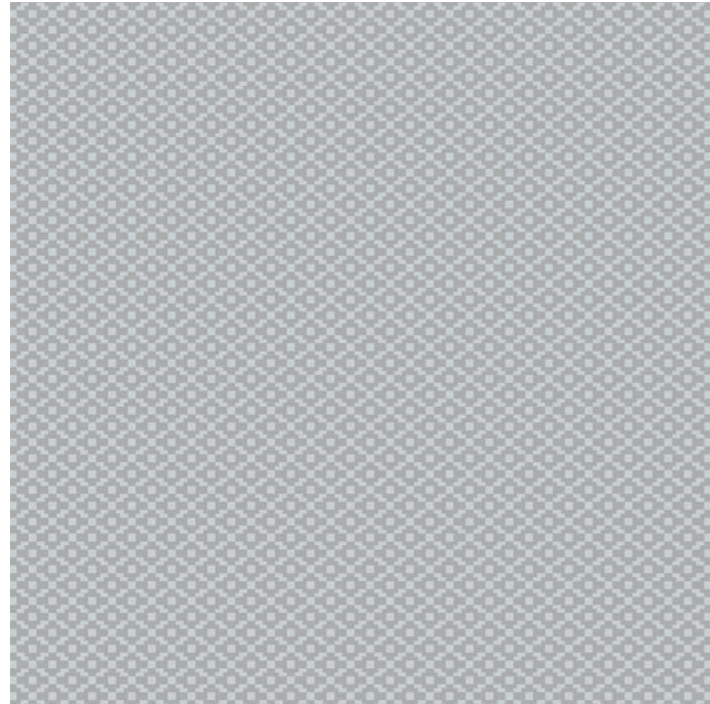


Design 50119-210
Greystoke
Repeat 0.03m SM

- 99/13 ●
- 135/00 ●

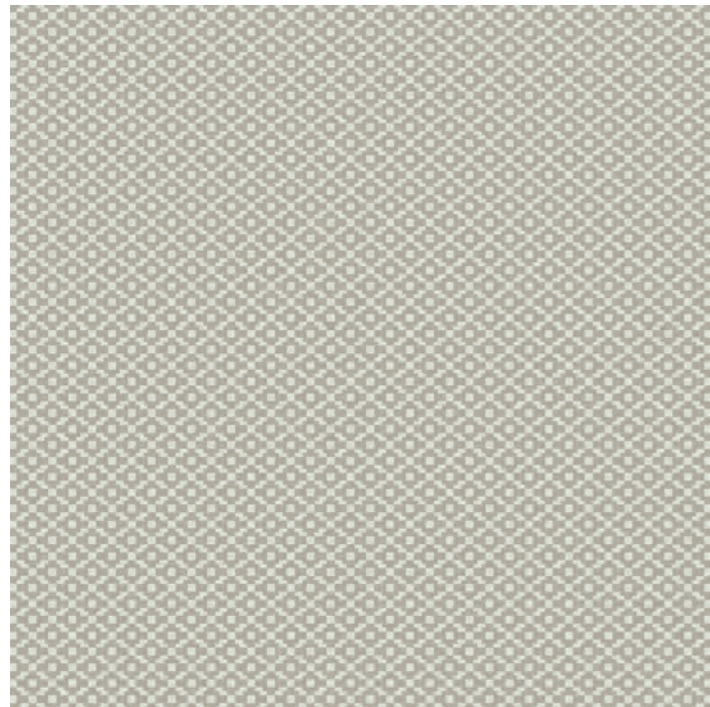


Heritage



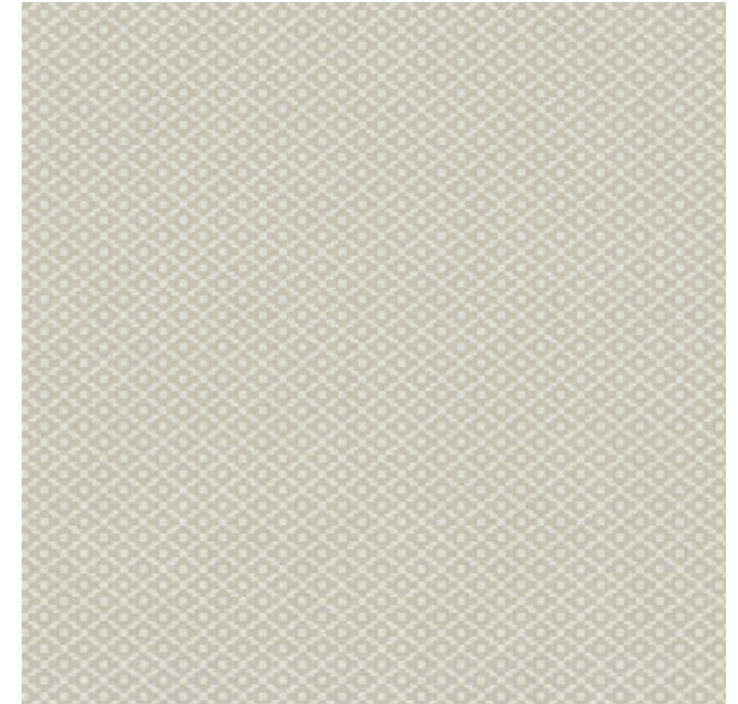
Design 50119-211
Wyke
Repeat 0.03m SM

- IC5402
- 15/17 221



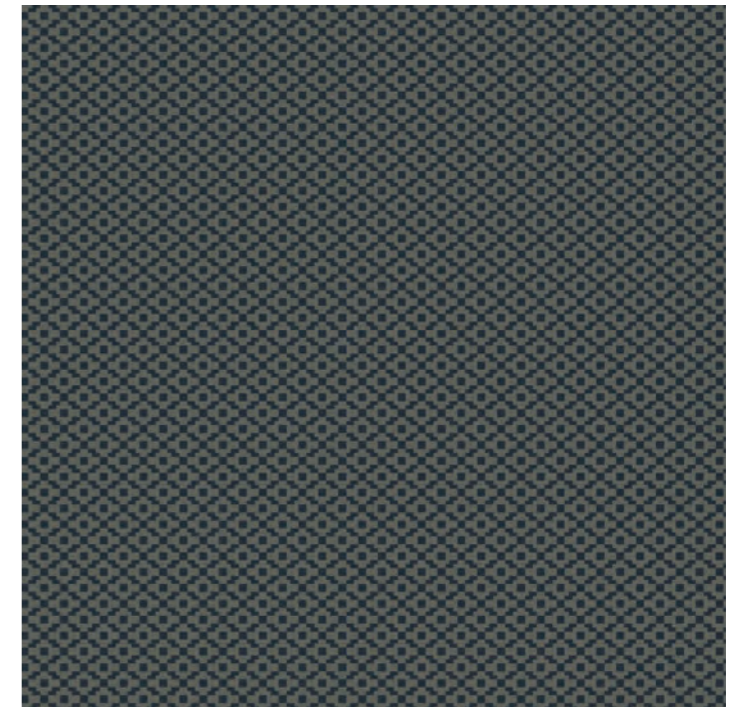
Design 50119-212
Watchfield
Repeat 0.03m SM

- 3/11 X1A
- 3/15 X5R HSL



Design 50119-213
Dinton
Repeat 0.03m SM

- 3/11 X1A
- 10/15 24M HSL

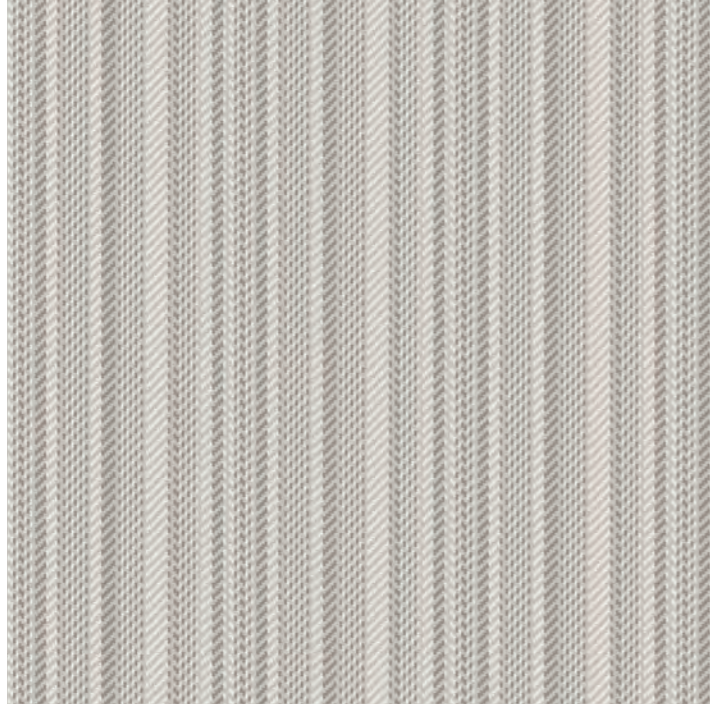


Design 50119-214
Midford
Repeat 0.03m SM

- 181/99 17C
- 12/17 22J

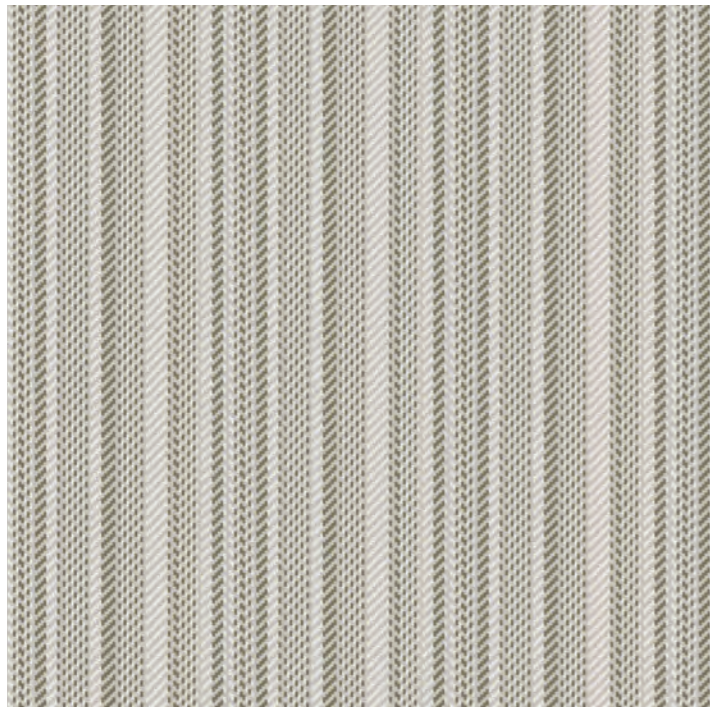
Cadis

Bespoke Tufted: Minimum order quantity of 300 sq metres.



Design 50264-327
Logwood
Repeat 0.01m SM

- 99/13
- 103/90
- 135/00



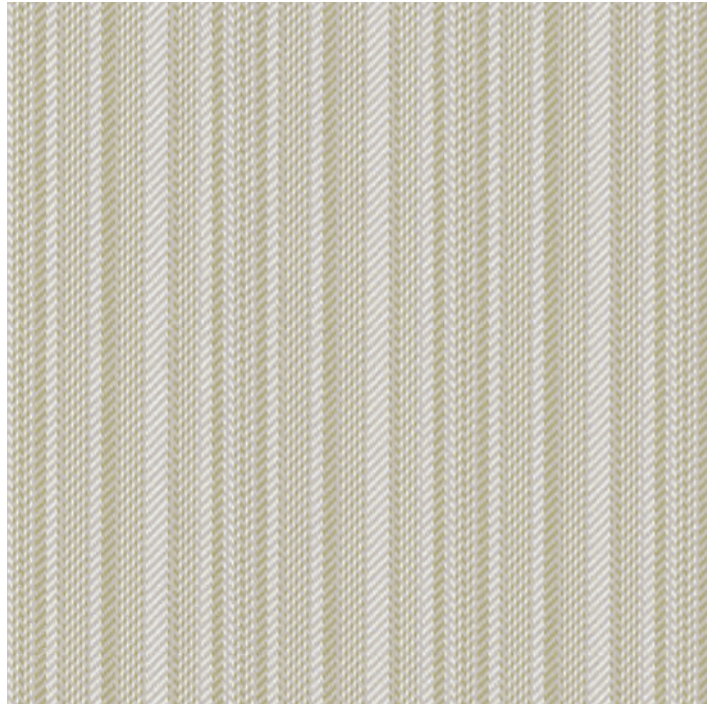
Design 50264-328
Lichen
Repeat 0.01m SM

- 99/13
- 3/20
- 135/00



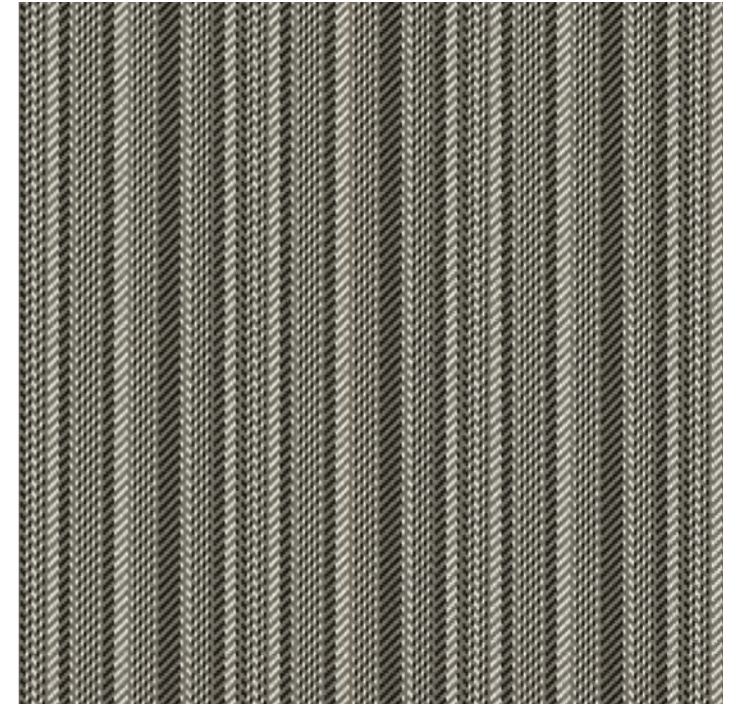
Cadis

Bespoke Tufted: Minimum order quantity of 300 sq metres



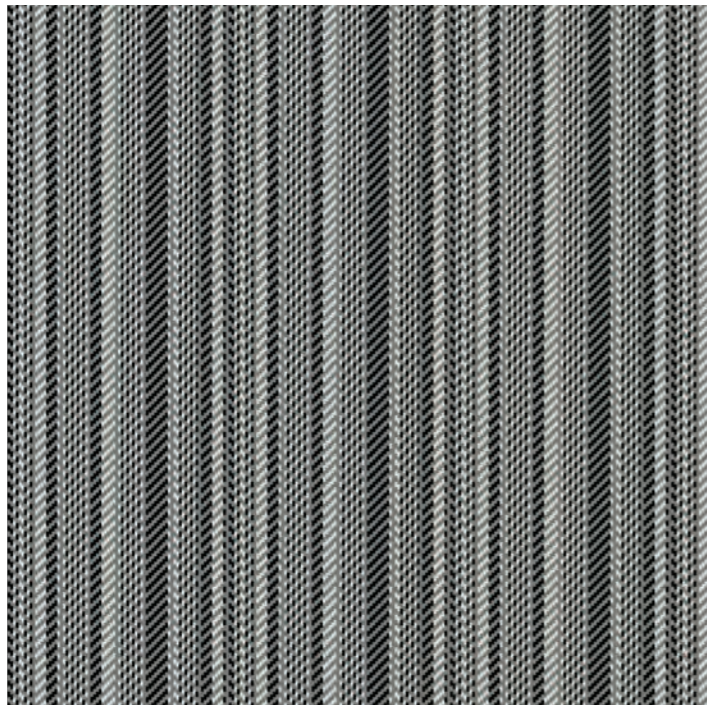
Design 50264-329
Turmeric
Repeat 0.01m SM

- 99/13
- IC130
- 135/00



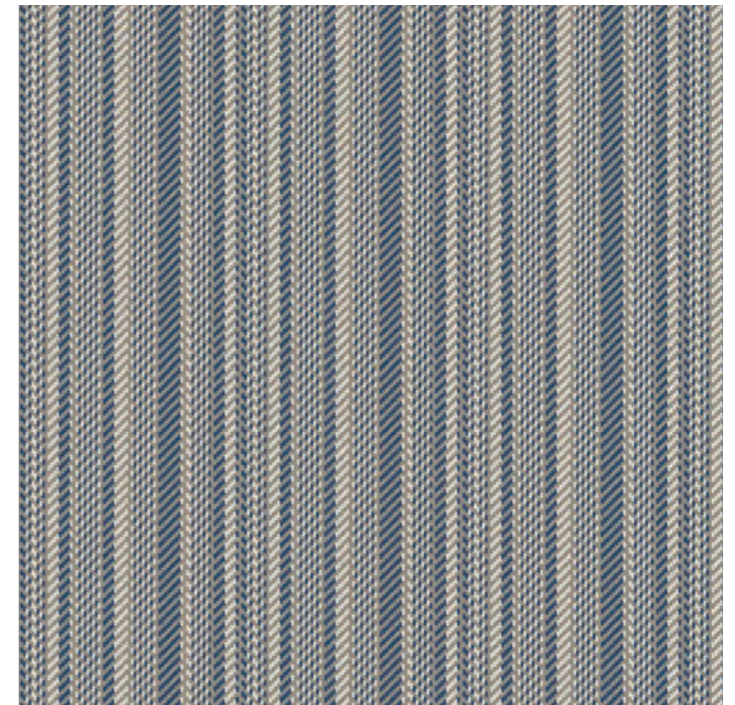
Design 50264-331
Walnut
Repeat 0.01m SM

- 77/02 18B
- 3/11 X1A
- 231/82 X3D



Design 50264-330
Acer
Repeat 0.01m SM

- 58/12 23G
- 3/11 X1A
- 1332



Design 50264-332
Wood
Repeat 0.01m SM

- 44/07 18G
- 3/11 X1A
- 187 23K



Technical Specification

All our tufted carpets are constructed from 80% wool and 20% nylon yarn with a synthetic secondary backing.

Range	Pile weight ISO 8543 (BS4223)		Width BS 3655
Chesil	1288gm m ²	38oz yd ²	4.00 m
The Tailored Collection	1356gm m ²	40oz yd ²	4.00 m
Berwick	1288gm m ²	38oz yd ²	4.00 m
Heritage	1220gm m ²	36oz yd ²	4.00 m
Cadis	1288gm m ²	38oz yd ²	4.00 m

CE-EN 14041 2004 Classification: CE
Cfl sl (C flooring)
Colour fastness: wet 3-4 (Scale 1-5)
Flammability: Radiant panel ISP 9239-1

Environmentally responsible printing

This brochure has been responsibly produced in the UK. Printed on FSC® certified paper, using fully sustainable, vegetable-oil based inks, power from 100% renewable resources and waterless printing technology. Print production systems registered to ISO 14001, ISO 9001 and over 97% of waste is recycled.





wiltoncarpets.com