

**Product  
catalogue  
2024**

“

Experience Mohawk Group  
for groundbreaking products  
that gratify harmony in  
every corner while adding  
grace to your space”

## About **Mohawk Group**

Mohawk Group is the premium brand for commercial flooring solutions of Unilin within the EMEA market.

Step into the core of Mohawk Group, where commitment to innovation, well-being and design converge. Learn more about our structural strength and experience an approach that enhances the well-being of everyone connected through our commercial flooring solutions.



Carpet Tiles

# The Collection

## ART INTERVENTION

---

Creative Spark	<b>06</b>
Expansion Point	<b>10</b>
Blurred Edge	<b>12</b>

## CONTOUR

---

Perspective	<b>14</b>
View	<b>16</b>

## IMMERSION

---

Alternate	<b>18</b>
Liberate	<b>20</b>
Animate	<b>22</b>

## IMPERFECTION

---

Grit	<b>24</b>
Bruut	<b>26</b>
Rupture	<b>28</b>

## LIGHT ART

---

Flare	<b>30</b>
Reflect	<b>32</b>

## PATTERN

---

Balanced	<b>34</b>
Tailored	<b>36</b>
Unchained	<b>38</b>

## RUDIMENTS

---

Basalt	<b>40</b>
Jute	<b>42</b>
Teak	<b>44</b>
Clay	<b>46</b>
Clay Create	<b>48</b>
Metallic Clay	<b>50</b>

## STEP UP

---

Step Up	<b>52</b>
---------	-----------





Multi Colour Mix

# Creative Spark

Art Intervention

- Construction: tufted 1/10" gauge loop
- Backing: EcoFlex™ Statera
- Pile material: 100% solution dyed nylon
- Dimensions - m<sup>2</sup>/box: 50 x 50 cm - 5 m<sup>2</sup>
- Pile weight: ± 540 g/m<sup>2</sup>
- Pile thickness: ± 3,1 mm
- Total thickness: ± 6,3 mm
- Wear classification: 33 / LC1
- Fire classification: Bfl-s1
- Impact sound reduction: ΔL<sub>w</sub> = 32 dB
- Sound absorption: 0,15 α<sub>w</sub>
- GUT-Prodís number: 3AA1D4DF

566 LRV: 2,41	646 LRV: 3,62	467 LRV: 6,73	478 LRV: 4,29
574 LRV: 5,67	685 LRV: 7,04	310 LRV: 5,82	363 LRV: 3,05
543 LRV: 6,67	621 LRV: 9,97	232 LRV: 12,32	362 LRV: 5,90
569 LRV: 6,21	627 LRV: 17,61	140 LRV: 31,36	838 LRV: 4,72

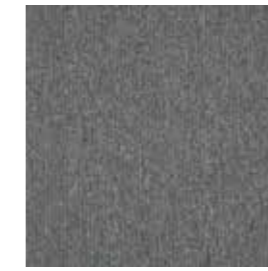
LRV = Light Reflectance Value according to BS 8493



646 □

□  
848□  
685□  
911

989 LRV: 4,37



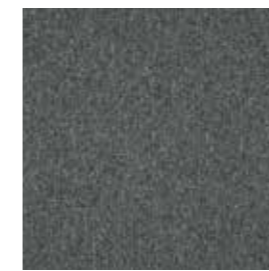
969 LRV: 12,73



419 LRV: 19,09



731 LRV: 25,98



979 LRV: 9,02



927 LRV: 19,80



854 LRV: 8,29



733 LRV: 18,39



904 LRV: 14,44



559 LRV: 13,16



848 LRV: 3,95



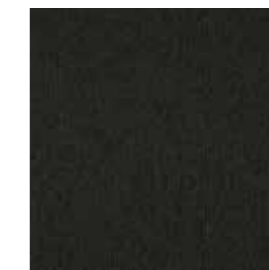
751 LRV: 20,99



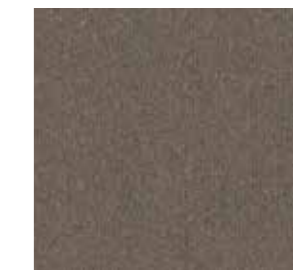
911 LRV: 31,04



545 LRV: 23,51



998 LRV: 2,29



745 LRV: 9,95





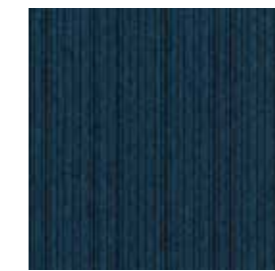
Creative Spark 621

Creative Spark 646

Expansion Point 621

## Expansion Point Art Intervention

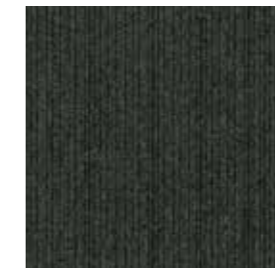
- Construction: tufted 1/10" gauge loop
- Backing: EcoFlex™ Statera
- Pile material: 100% solution dyed nylon
- Dimensions - m<sup>2</sup>/box: 50 x 50 cm - 5 m<sup>2</sup>
- Pile weight: ± 540 g/m<sup>2</sup>
- Pile thickness: ± 3,3 mm
- Total thickness: ± 6,6 mm
- Wear classification: 33 / LC21
- Fire classification: Bfl-s1
- Impact sound reduction: ΔL<sub>w</sub> = 27 dB
- Sound absorption: 0,15 α<sub>w</sub>
- GUT-Prodís number: F6619831


**575** LRV: 3,74 - L 23,93

**478** LRV: 5,10 - L 26,87

**363** LRV: 4,20 - L 24,31

**273** LRV: 8,25 - L 33,13

**621** LRV: 5,97 - L 29,64

**987** LRV: 5,77 - L 29,28

**979** LRV: 3,51 - L 22,39

**838** LRV: 3,38 - L 21,67

**972** LRV: 11,13 - L 29,64

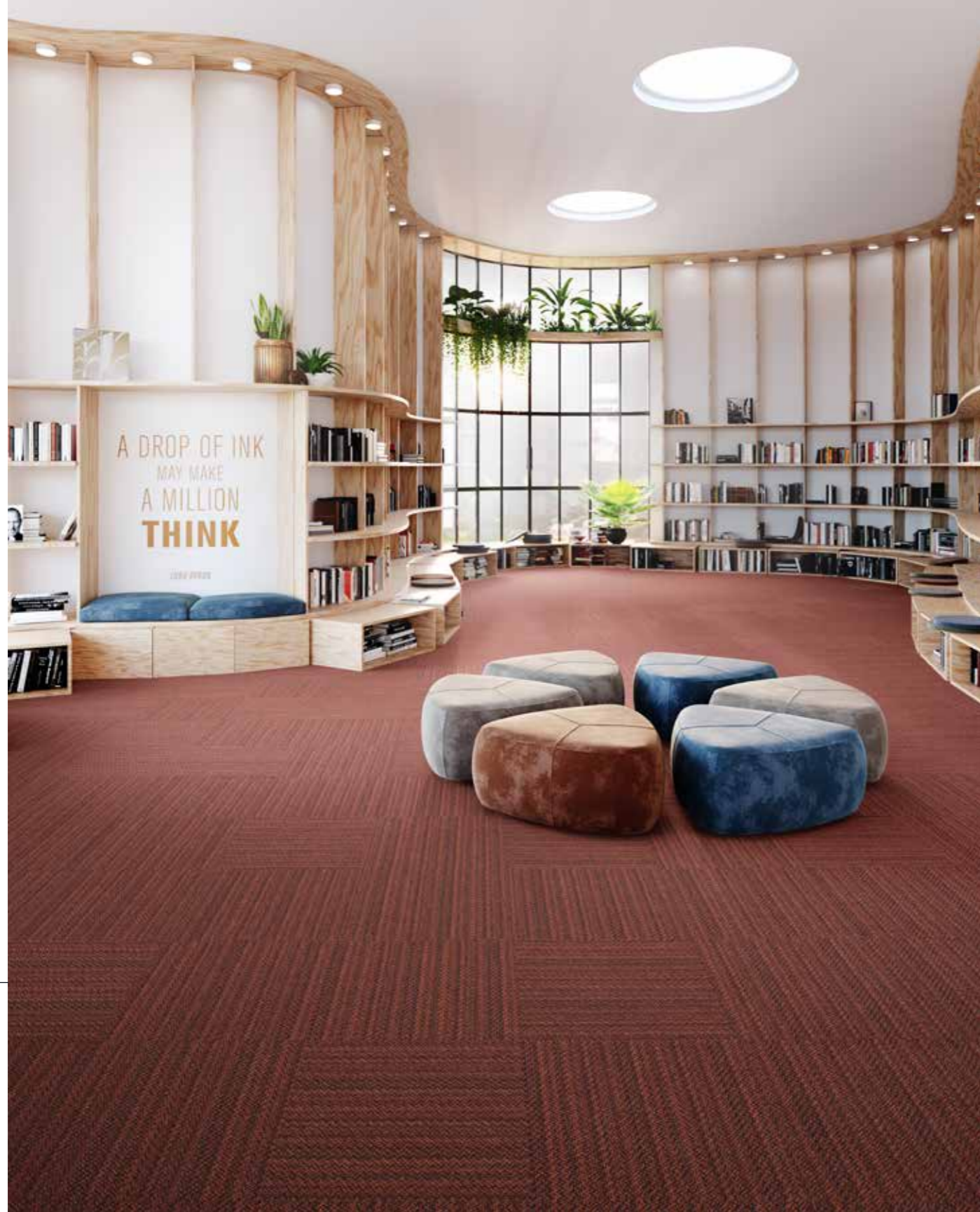
**911** LRV: 19,47 - L 50,74

**975** LRV: 20,77 - L 53,00

**743** LRV: 16,44 - L 46,02

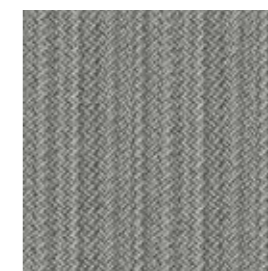
LRV = Light Reflectance Value according to BS 8493, L = according to CIE L\*a\*b\* colour space





# Blurred Edge Art Intervention

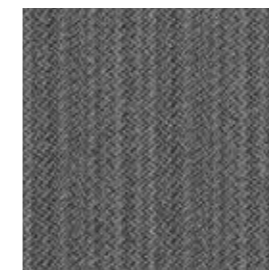
- Construction: tufted 1/10" gauge loop
- Backing: EcoFlex™ Statera
- Pile material: 100% solution dyed nylon
- Dimensions - m<sup>2</sup>/box: 50 x 50 cm - 5 m<sup>2</sup>
- Pile weight: ± 540 g/m<sup>2</sup>
- Pile thickness: ± 2,5 mm
- Total thickness: ± 6,6 mm
- Wear classification: 33 / LC11
- Fire classification: Bfl-s1
- Impact sound reduction: ΔL<sub>w</sub> = 25 dB
- Sound absorption: 0,15 α<sub>w</sub>
- GUT-Prodís number: Ongoing



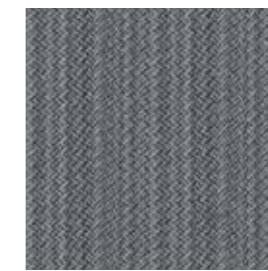
**911** LRV: 17,78 - L 47,80



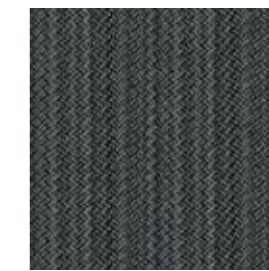
**979** LRV: 5,08 - L 26,12



**987** LRV: 8,18 - L 36,46



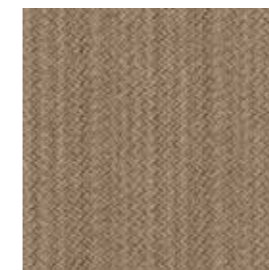
**559** LRV: 13,19 - L 43,24



**569** LRV: 6,37 - L 29,36



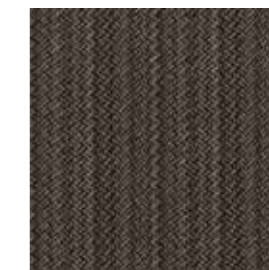
**685** LRV: 4,11 - L 24,84



**733** LRV: 15,59 - L 46,41



**854** LRV: 8,74 - L 36,79



**848** LRV: 5,35 - L 28,54



**362** LRV: 4,06 - L 22,41

LRV = Light Reflectance Value according to BS 8493, L = according to CIE L\*a\*b\* colour space



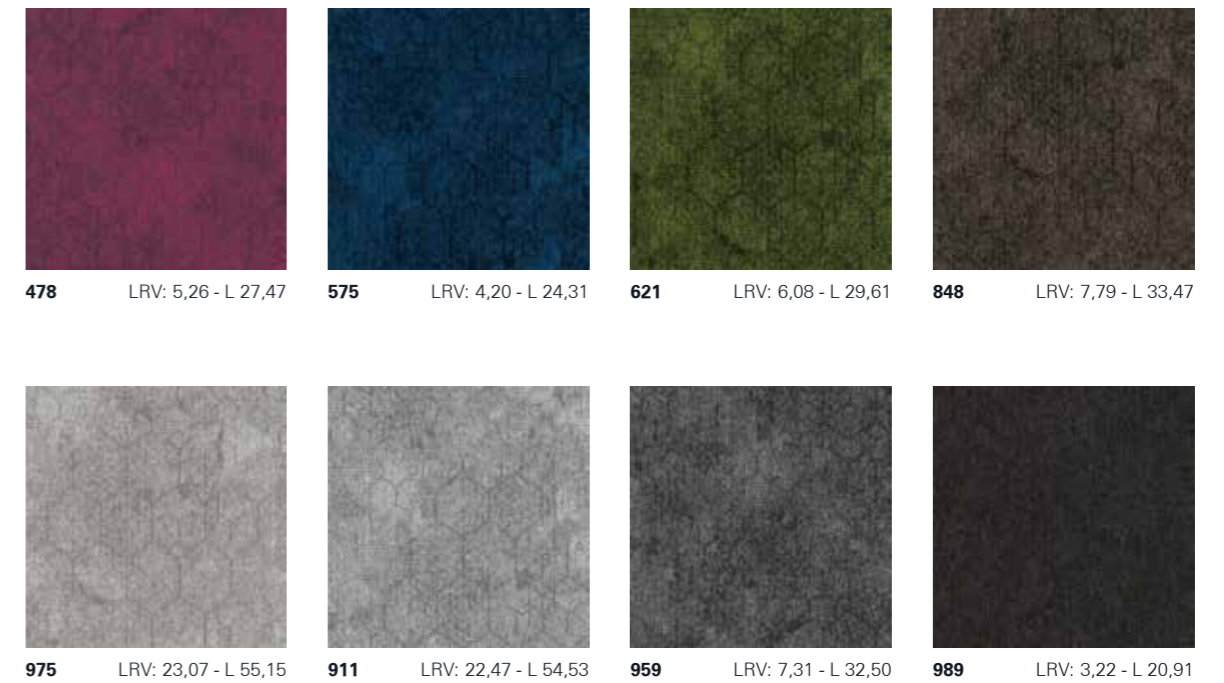


621

975

# Perspective Contour

- Construction: tufted 1/12" gauge loop
- Backing: EcoFlex™ Statera
- Pile material: 100% solution dyed nylon
- Dimensions - m<sup>2</sup>/box: 50 x 50 cm - 5 m<sup>2</sup>
- Pile weight: ± 600 g/m<sup>2</sup>
- Pile thickness: ± 3,1 mm
- Total thickness: ± 6,4 mm
- Wear classification: 33 / LC1
- Fire classification: Bfl-s1
- Impact sound reduction: ΔL<sub>w</sub> = 25 dB
- Sound absorption: 0,15 α<sub>w</sub>
- GUT-Prodís number: 6119BCAA



LRV = Light Reflectance Value according to BS 8493, L = according to CIE L\*a\*b\* colour space



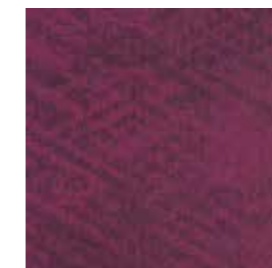


989

959

## View Contour

- Construction: tufted 1/12" gauge loop
- Backing: EcoFlex™ Statera
- Pile material: 100% solution dyed nylon
- Dimensions - m<sup>2</sup>/box: 50 x 50 cm - 5 m<sup>2</sup>
- Pile weight: ± 600 g/m<sup>2</sup>
- Pile thickness: ± 3,1 mm
- Total thickness: ± 6,4 mm
- Wear classification: 33 / LC1
- Fire classification: Bfl-s1
- Impact sound reduction: ΔL<sub>w</sub> = 25 dB
- Sound absorption: 0,15 α<sub>w</sub>
- GUT-Prodís number: CAC6CFE5



**478** LRV: 5,75 - L 28,78



**575** LRV: 4,87 - L 26,35



**621** LRV: 6,59 - L 30,85



**848** LRV: 6,49 - L 30,62



**975** LRV: 23,86 - L 55,95



**911** LRV: 23,07 - L 55,15



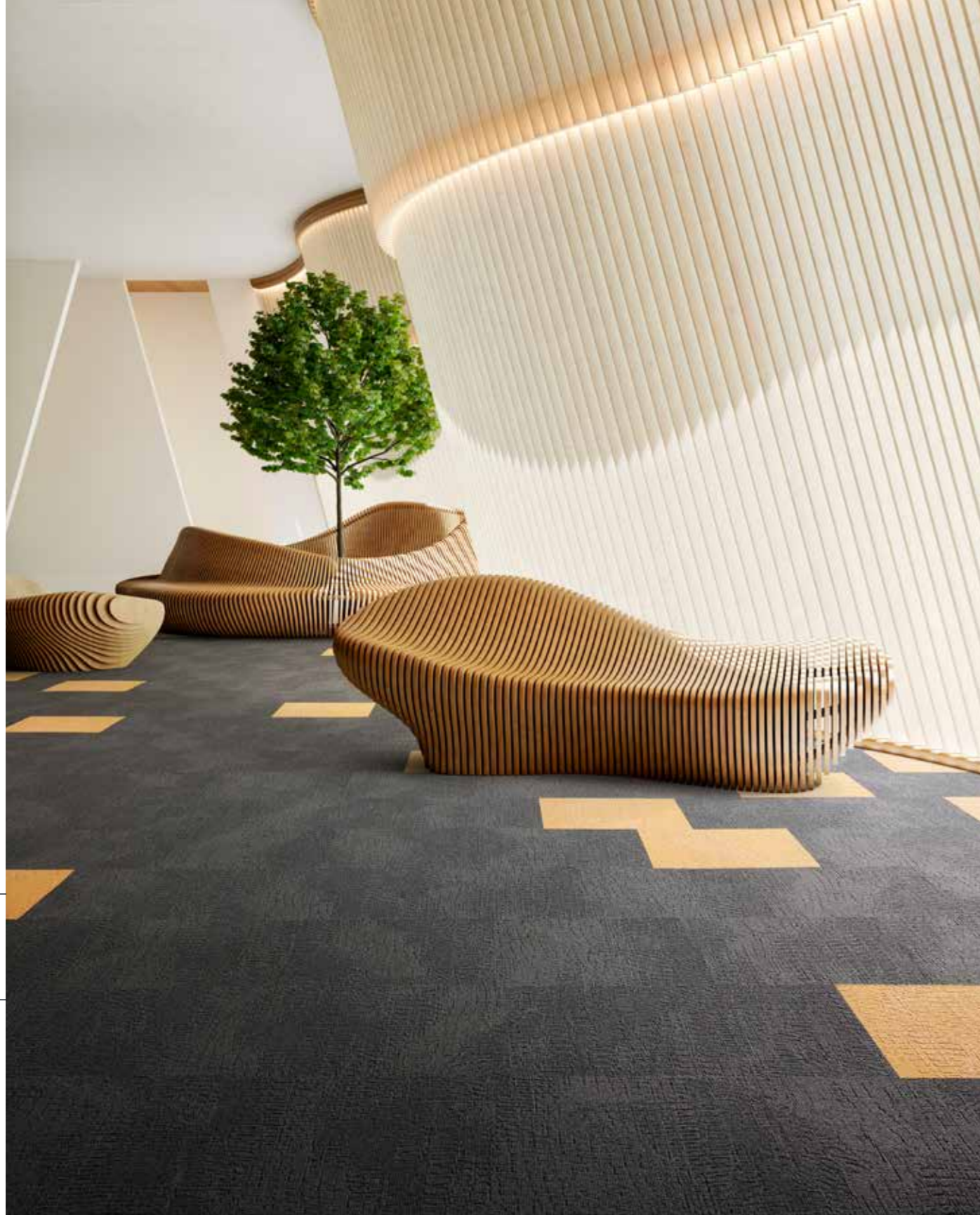
**959** LRV: 7,81 - L 33,59



**989** LRV: 2,92 - L 19,72

LRV = Light Reflectance Value according to BS 8493, L = according to CIE L\*a\*b\* colour space





232 □

848 □

			
<b>140</b> LRV: 41,01 - L 70,19	<b>232</b> LRV: 28,95 - L 60,74	<b>467</b> LRV: 6,77 - L 31,29	<b>474</b> LRV: 6,16 - L 29,81
			
<b>574</b> LRV: 10,84 - L 39,31	<b>621</b> LRV: 5,32 - L 27,64	<b>699</b> LRV: 3,52 - L 22,02	<b>543</b> LRV: 3,74 - L 22,80
			
<b>545</b> LRV: 18,01 - L 49,51	<b>911</b> LRV: 25,49 - L 57,55	<b>969</b> LRV: 16,01 - L 46,99	<b>559</b> LRV: 10,89 - L 39,40
			
<b>731</b> LRV: 24,64 - L 56,72	<b>904</b> LRV: 14,51 - L 44,96	<b>979</b> LRV: 11,31 - L 40,09	<b>989</b> LRV: 5,74 - L 28,75
			
		<b>569</b> LRV: 5,59 - L 28,36	<b>848</b> LRV: 4,55 - L 25,42

# Alternate Immersion

- Construction: tufted 1/12" gauge loop
- Backing: EcoFlex™ Statera
- Pile material: 100% SDN Thrive® Matter
- Dimensions - m<sup>2</sup>/box: 50 x 50 cm - 4,5 m<sup>2</sup>
- Pile weight: ± 700 g/m<sup>2</sup>
- Pile thickness: ± 3,4 mm
- Total thickness: ± 7,0 mm
- Wear classification: 33 / LC2
- Fire classification: Bfl-s1
- Impact sound reduction: ΔLw = 24 dB
- Sound absorption: 0,15 αw
- GUT-ProdIs number: Ongoing





# Liberate

Immersion

- Construction: tufted 1/12" gauge loop
- Backing: EcoFlex™ Statera
- Pile material: 100% SDN Thrive® Matter
- Dimensions - m<sup>2</sup>/box: 50 x 50 cm - 4,5 m<sup>2</sup>
- Pile weight: ± 700 g/m<sup>2</sup>
- Pile thickness: ± 3,3 mm
- Total thickness: ± 7,3 mm
- Wear classification: 33 / LC2
- Fire classification: Bfl-s1
- Impact sound reduction: ΔLw = 25 dB
- Sound absorption: 0,15 αw
- GUT-ProdIs number: Ongoing





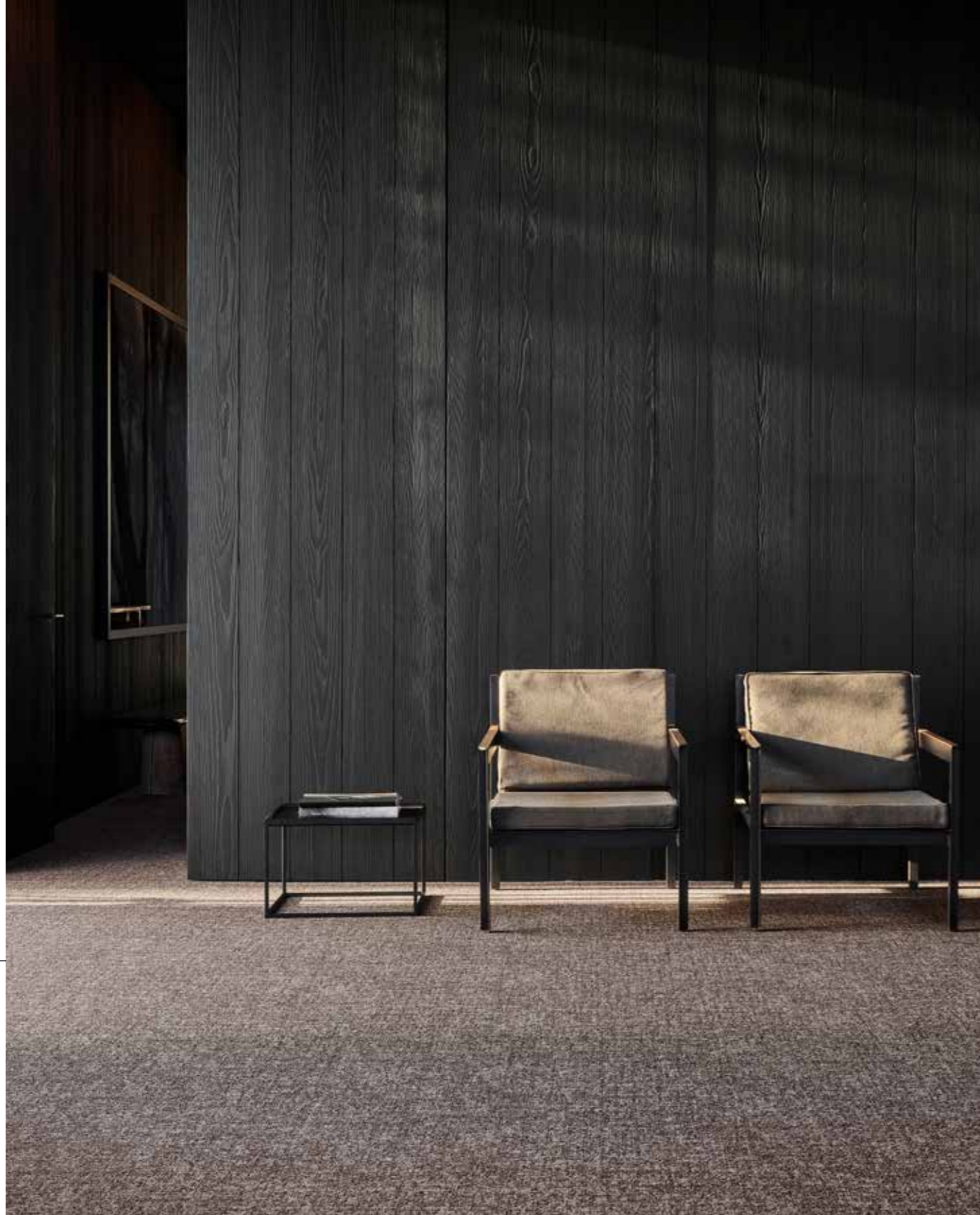
Multi Colour Mix

# Animate Immersion

- Construction: tufted 1/12" gauge loop
- Backing: EcoFlex™ Statera
- Pile material: 100% SDN Thrive® Matter
- Dimensions - m<sup>2</sup>/box: 50 x 50 cm - 4,5 m<sup>2</sup>
- Pile weight: ± 700 g/m<sup>2</sup>
- Pile thickness: ± 3,3 mm
- Total thickness: ± 7,2 mm
- Wear classification: 33 / LC2
- Fire classification: Bfl-s1
- Impact sound reduction: ΔL<sub>w</sub> = 24 dB
- Sound absorption: 0,15 α<sub>w</sub>
- GUT-Prodís number: Ongoing

<b>140</b> LRV: 41,01 - L 70,19	<b>232</b> LRV: 28,95 - L 60,74	<b>467</b> LRV: 6,77 - L 31,29	<b>474</b> LRV: 6,16 - L 29,81
<b>574</b> LRV: 10,84 - L 39,31	<b>621</b> LRV: 5,32 - L 27,64	<b>699</b> LRV: 3,52 - L 22,02	<b>543</b> LRV: 3,74 - L 22,80
<b>545</b> LRV: 18,01 - L 49,51	<b>911</b> LRV: 25,49 - L 57,55	<b>969</b> LRV: 16,01 - L 46,99	<b>559</b> LRV: 10,89 - L 39,40
<b>731</b> LRV: 24,64 - L 56,72	<b>904</b> LRV: 14,51 - L 44,96	<b>979</b> LRV: 11,31 - L 40,09	<b>989</b> LRV: 5,74 - L 28,75
		<b>569</b> LRV: 5,59 - L 28,36	<b>848</b> LRV: 4,55 - L 25,42





745 □

# Grit Imperfection

- Construction: 1/12" Pattern Perfect®
- Backing: EcoFlex™ Echo (94% recycled felt)
- Pile material: ECONYL® - 100% regenerated nylon
- Dimensions - m<sup>2</sup>/box: 25 x 100 cm - 4 m<sup>2</sup>
- Pile weight: ± 750 g/m<sup>2</sup>
- Pile thickness: ± 3,2 mm
- Total thickness: ± 8,6 mm
- Wear classification: 33 / LC2
- Fire classification: Bfl-s1
- Impact sound reduction: ΔL<sub>w</sub> = 29 dB
- Sound absorption: 0,25 α<sub>w</sub>
- GUT-Prodís number: Ongoing


**975** LRV: 21,33 - L 53,31

**751** LRV: 30,19 - L 61,82

**911** LRV: 20,27 - L 52,14

**733** LRV: 15,13 - L 45,81

**545** LRV: 21,83 - L 53,85

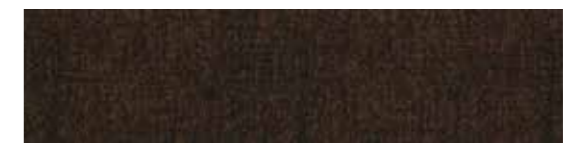
**685** LRV: 11,20 - L 39,91

**569** LRV: 10,31 - L 38,40

**969** LRV: 9,67 - L 37,24

**959** LRV: 7,69 - L 33,37

**745** LRV: 11,36 - L 40,17

**989** LRV: 5,30 - L 27,59

**838** LRV: 3,05 - L 20,23

LRV = Light Reflectance Value according to BS 8493, L = according to CIE L\*a\*b\* colour space





# Bruut

Imperfection

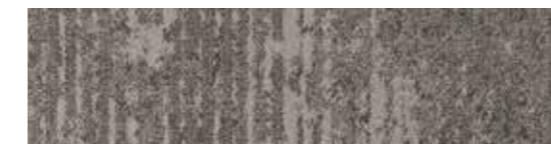
- Construction: 1/12" Pattern Perfect®
- Backing: EcoFlex™ Echo (94% recycled felt)
- Pile material: ECONYL® - 100% regenerated nylon
- Dimensions - m<sup>2</sup>/box: 25 x 100 cm - 4 m<sup>2</sup>
- Pile weight: ± 780 g/m<sup>2</sup>
- Pile thickness: ± 3,3 mm
- Total thickness: ± 8,7 mm
- Wear classification: 33 / LC2
- Fire classification: Bfl-s1
- Impact sound reduction: ΔLw = 31 dB
- Sound absorption: 0,30 aw
- GUT-ProdIs number: Ongoing



975 LRV: 25,80 - L 57,85



751 LRV: 34,14 - L 65,07



911 LRV: 23,52 - L 55,61



733 LRV: 16,00 - L 46,97



545 LRV: 25,29 - L 57,36



685 LRV: 12,85 - L 42,53



569 LRV: 11,70 - L 40,74



969 LRV: 11,42 - L 40,27



959 LRV: 9,49 - L 36,91



745 LRV: 11,77 - L 40,85



989 LRV: 4,68 - L 25,79



838 LRV: 3,48 - L 21,88

LRV = Light Reflectance Value according to BS 8493, L = according to CIE L\*a\*b\* colour space





Rupture  
989

Bruut 989

Grit 989

# Rupture Imperfection

- Construction: 1/12" Pattern Perfect®
- Backing: EcoFlex™ Echo (94% recycled felt)
- Pile material: ECONYL® - 100% regenerated nylon
- Dimensions - m<sup>2</sup>/box: 25 x 100 cm - 4 m<sup>2</sup>
- Pile weight: ± 780 g/m<sup>2</sup>
- Pile thickness: ± 3,3 mm
- Total thickness: ± 8,7 mm
- Wear classification: 33 / LC2
- Fire classification: Bfl-s1
- Impact sound reduction: ΔL<sub>w</sub> = 30 dB
- Sound absorption: 0,30 aw
- GUT-ProdIs number: Ongoing



975 LRV: 23,55 - L 55,63



751 LRV: 33,07 - L 64,22



911 LRV: 21,49 - L 53,48



733 LRV: 15,51 - L 46,32



545 LRV: 25,02 - L 57,09



685 LRV: 12,32 - L 41,72



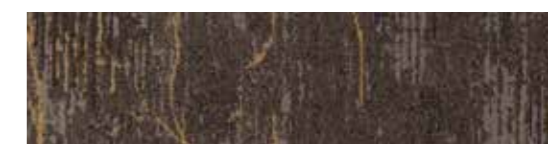
569 LRV: 11,23 - L 39,97



969 LRV: 11,58 - L 40,54



959 LRV: 9,02 - L 36,02



745 LRV: 12,97 - L 42,72



989 LRV: 5,23 - L 27,38



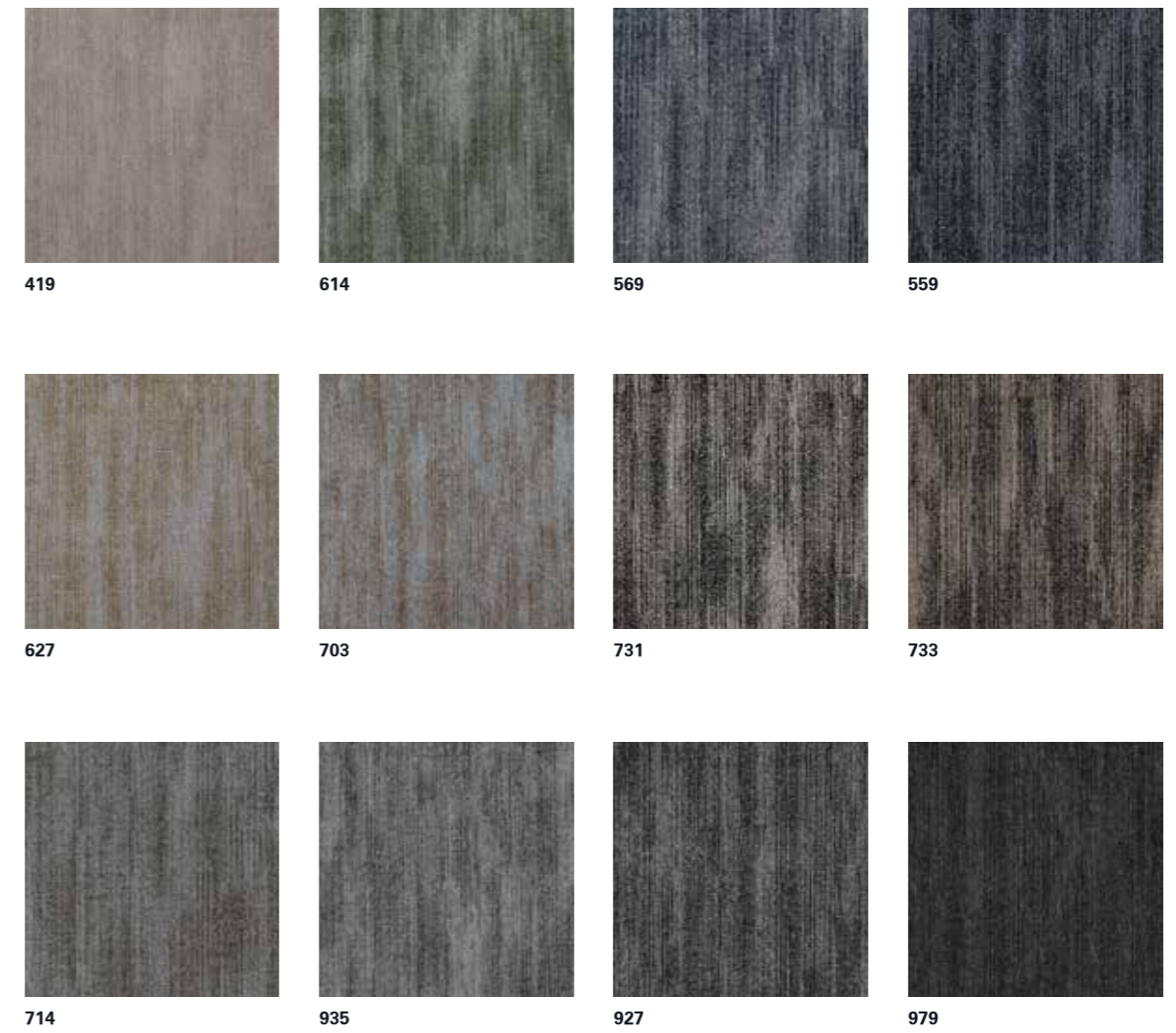
838 LRV: 5,64 - L 28,49

LRV = Light Reflectance Value according to BS 8493, L = according to CIE L\*a\*b\* colour space





559 □



419

614

569

559

627

703

731

733

714

935

927

979

# Flare

Light Art

- Construction: tufted 1/12" gauge loop
- Backing: EcoFlex™ Statera
- Pile material: 100% solution dyed nylon
- Dimensions - m<sup>2</sup>/box: 50 x 50 cm - 5 m<sup>2</sup>
- Pile weight: ± 540 g/m<sup>2</sup>
- Pile thickness: ± 3,0 mm
- Total thickness: ± 6,3 mm
- Wear classification: 33 / LC1
- Fire classification: Bfl-s1
- Impact sound reduction: ΔLw = 24 dB
- Sound absorption: 0,15 αw
- GUT-Prodís number: Ongoing

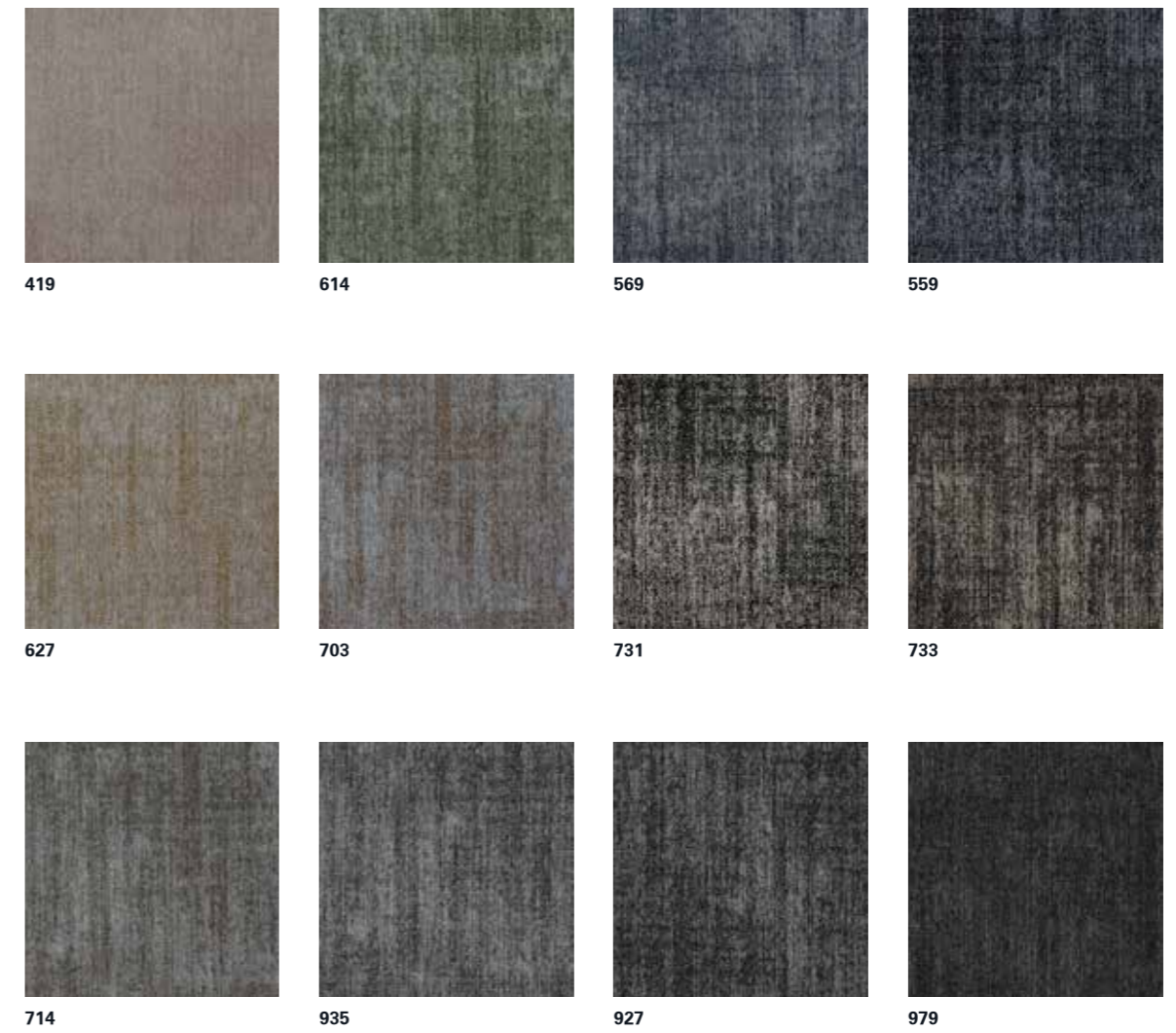




733 ☐

# Reflect Light Art

- Construction: tufted 1/12" gauge loop
- Backing: EcoFlex™ Statera
- Pile material: 100% solution dyed nylon
- Dimensions - m<sup>2</sup>/box: 50 x 50 cm - 5 m<sup>2</sup>
- Pile weight: ± 540 g/m<sup>2</sup>
- Pile thickness: ± 3,0 mm
- Total thickness: ± 6,1 mm
- Wear classification: 33 / LC1
- Fire classification: Bfl-s1
- Impact sound reduction: ΔLw = 24 dB
- Sound absorption: 0,15 αw
- GUT-ProdIs number: Ongoing







# Balanced Pattern

- Construction: tufted 1/12" gauge loop
- Backing: EcoFlex™ Statera
- Pile material: 100% SDN Thrive® Matter
- Dimensions - m<sup>2</sup>/box: 50 x 50 cm - 4,5 m<sup>2</sup>
- Pile weight: ± 720 g/m<sup>2</sup>
- Pile thickness: ± 3,5 mm
- Total thickness: ± 7,0 mm
- Wear classification: 33 / LC2
- Fire classification: Bfl-s1
- Impact sound reduction: ΔLw = 25 dB
- Sound absorption: 0,20 aw
- GUT-Prodís number: Ongoing

<b>383</b> LRV: 17,40	<b>419</b> LRV: 26,27	<b>468</b> LRV: 16,24	<b>542</b> LRV: 15,53
<b>545</b> LRV: 13,95	<b>559</b> LRV: 8,88	<b>569</b> LRV: 4,08	<b>627</b> LRV: 23,73
<b>656</b> LRV: 15,60	<b>731</b> LRV: 28,94	<b>848</b> LRV: 9,79	<b>904</b> LRV: 20,08
<b>911</b> LRV: 32,63	<b>969</b> LRV: 21,51	<b>979</b> LRV: 11,27	<b>989</b> LRV: 4,38

LRV = Light Reflectance Value according to BS 8493, L = according to CIE L\*a\*b\* colour space





## Tailored Pattern

- Construction: tufted 1/12" gauge loop
- Backing: EcoFlex™ Statera
- Pile material: 100% SDN Thrive® Matter
- Dimensions - m<sup>2</sup>/box: 50 x 50 cm - 4,5 m<sup>2</sup>
- Pile weight: ± 720 g/m<sup>2</sup>
- Pile thickness: ± 3,7 mm
- Total thickness: ± 6,9 mm
- Wear classification: 33 / LC2
- Fire classification: Bfl-s1
- Impact sound reduction: ΔL<sub>w</sub> = 25 dB
- Sound absorption: 0,20 aw
- GUT-Prodix number: Ongoing

LRV = Light Reflectance Value according to BS 8493, L = according to CIE L\*a\*b\* colour space





			
<b>383</b> LRV: 17,40	<b>419</b> LRV: 26,27	<b>468</b> LRV: 16,24	<b>542</b> LRV: 15,53
			
<b>545</b> LRV: 13,95	<b>559</b> LRV: 8,88	<b>569</b> LRV: 4,08	<b>627</b> LRV: 23,73
			
<b>656</b> LRV: 15,60	<b>731</b> LRV: 28,94	<b>848</b> LRV: 9,79	<b>904</b> LRV: 20,08
			
<b>911</b> LRV: 32,63	<b>969</b> LRV: 21,51	<b>979</b> LRV: 11,27	<b>989</b> LRV: 4,38

# Unchained Pattern

- Construction: tufted 1/12" gauge loop
- Backing: EcoFlex™ Statera
- Pile material: 100% SDN Thrive® Matter
- Dimensions - m<sup>2</sup>/box: 50 x 50 cm - 4,5 m<sup>2</sup>
- Pile weight: ± 720 g/m<sup>2</sup>
- Pile thickness: ± 3,4 mm
- Total thickness: ± 7,1 mm
- Wear classification: 33 / LC2
- Fire classification: Bfl-s1
- Impact sound reduction: ΔLw = 25 dB
- Sound absorption: 0,20 aw
- GUT-Prodís number: Ongoing

LRV = Light Reflectance Value according to BS 8493, L = according to CIE L\*a\*b\* colour space

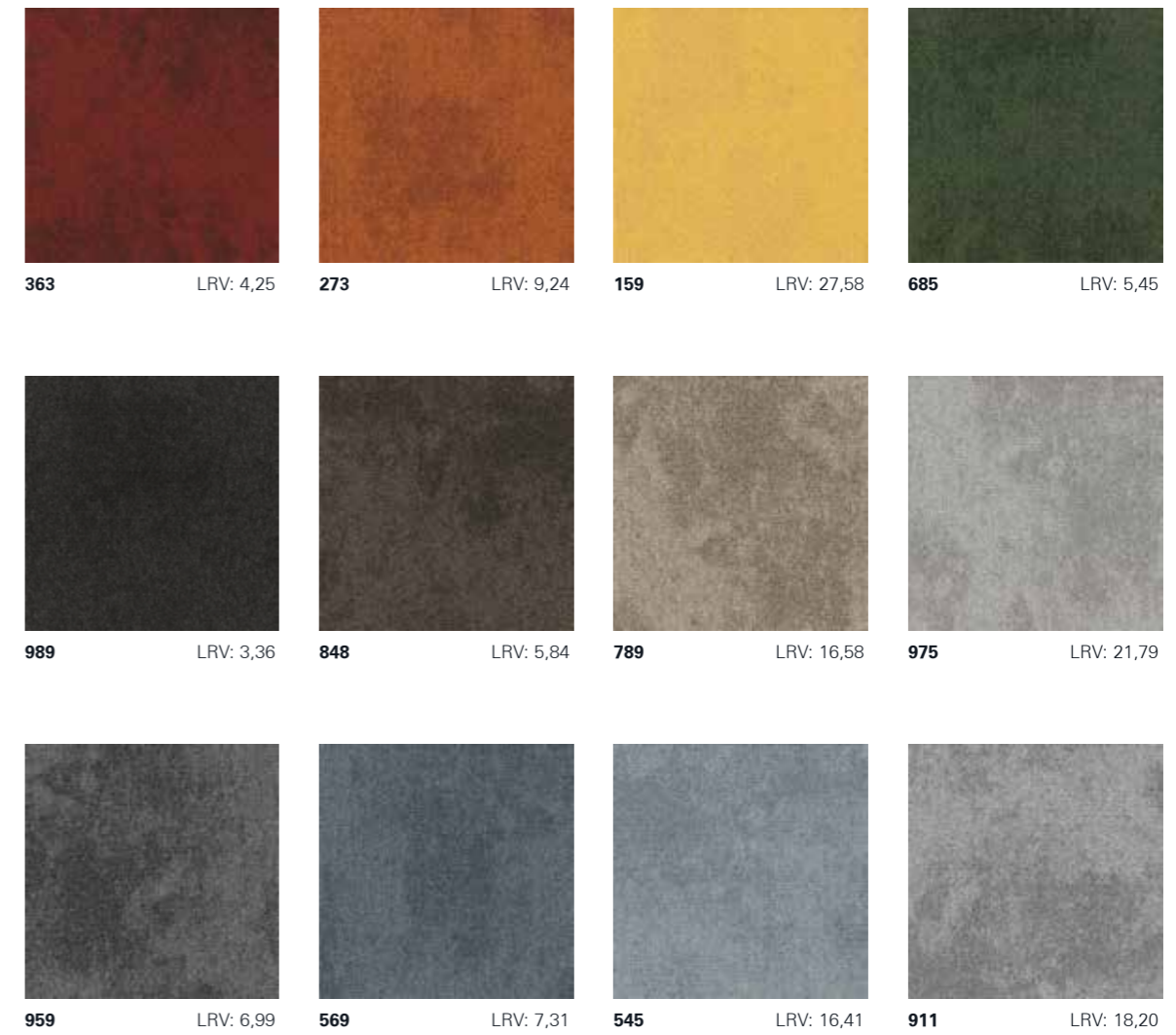




569 □  
545 □

# Basalt Rudiments

- Construction: tufted 1/12" gauge loop
- Backing: EcoFlex™ Statera
- Pile material: 100% solution dyed nylon
- Dimensions - m<sup>2</sup>/box: 50 x 50 cm - 5 m<sup>2</sup>
- Pile weight: ± 600 g/m<sup>2</sup>
- Pile thickness: ± 3,1 mm
- Total thickness: ± 6,4 mm
- Wear classification: 33 / LC1
- Fire classification: Bfl-s1
- Impact sound reduction: ΔLw = 28 dB
- Sound absorption: 0,15 αw
- GUT-Prodís number: 65EB708B



LRV = Light Reflectance Value according to BS 8493, L = according to CIE L\*a\*b\* colour space





959 □  
989 □  
159 □

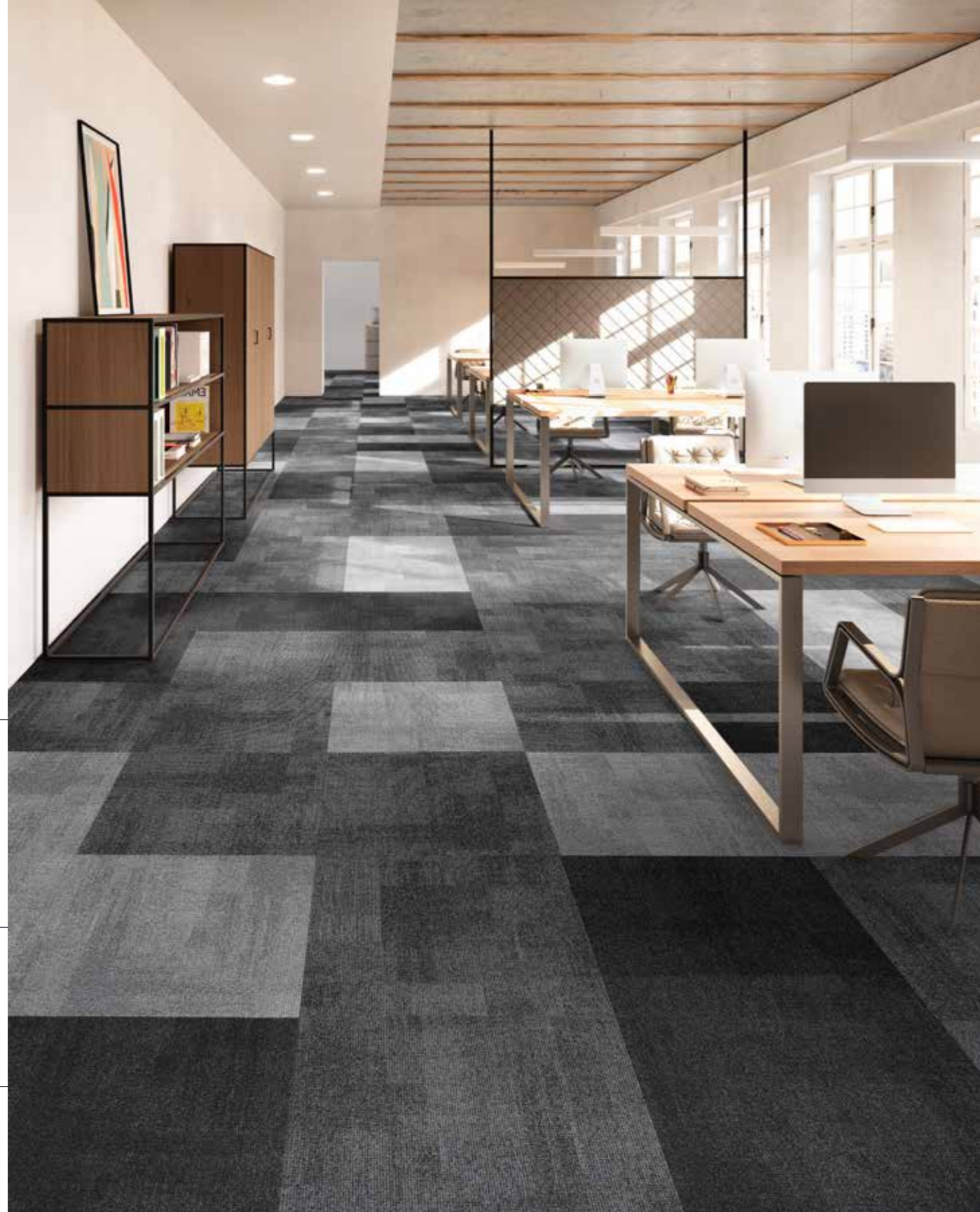
# Jute Rudiments

- Construction: tufted 1/12" gauge loop
- Backing: EcoFlex™ Statera
- Pile material: 100% solution dyed nylon
- Dimensions - m<sup>2</sup>/box: 50 x 50 cm - 5 m<sup>2</sup>
- Pile weight: ± 600 g/m<sup>2</sup>
- Pile thickness: ± 3,2 mm
- Total thickness: ± 6,4 mm
- Wear classification: 33 / LC2
- Fire classification: Bfl-s1
- Impact sound reduction: ΔLw = 28 dB
- Sound absorption: 0,15 aw
- GUT-Prodís number: 94EFCC68

			
<b>363</b> LRV: 4,25	<b>273</b> LRV: 9,24	<b>159</b> LRV: 27,58	<b>685</b> LRV: 5,45
			
<b>989</b> LRV: 3,36	<b>848</b> LRV: 5,84	<b>789</b> LRV: 16,58	<b>975</b> LRV: 21,79
			
<b>959</b> LRV: 6,99	<b>569</b> LRV: 7,31	<b>545</b> LRV: 16,41	<b>911</b> LRV: 18,20

LRV = Light Reflectance Value according to BS 8493, L = according to CIE L\*a\*b\* colour space





959













911

989

# Teak

Rudiments

- Construction: tufted 1/12" gauge loop
- Backing: EcoFlex™ Statera
- Pile material: 100% solution dyed nylon
- Dimensions - m<sup>2</sup>/box: 50 x 50 cm - 5 m<sup>2</sup>
- Pile weight: ± 600 g/m<sup>2</sup>
- Pile thickness: ± 2,9 mm
- Total thickness: ± 6,4 mm
- Wear classification: 33 / LC1
- Fire classification: Bfl-s1
- Impact sound reduction: ΔL<sub>w</sub> = 28 dB
- Sound absorption: 0,15 α<sub>w</sub>
- GUT-Prodís number: AB56D646

			
<b>363</b> LRV: 4,25	<b>273</b> LRV: 9,24	<b>159</b> LRV: 27,58	<b>685</b> LRV: 5,45
			
<b>989</b> LRV: 3,36	<b>848</b> LRV: 5,84	<b>789</b> LRV: 16,58	<b>975</b> LRV: 21,79
			
<b>959</b> LRV: 6,99	<b>569</b> LRV: 7,31	<b>545</b> LRV: 16,41	<b>911</b> LRV: 18,20

LRV = Light Reflectance Value according to BS 8493, L = according to CIE L\*a\*b\* colour space





911 - 975

# Clay

Rudiments

- Construction: tufted 1/12" gauge loop
- Backing: EcoFlex™ Statera
- Pile material: 100% solution dyed nylon
- Dimensions - m<sup>2</sup>/box: 25 x 100 cm - 5 m<sup>2</sup>
- Pile weight: ± 600 g/m<sup>2</sup>
- Pile thickness: ± 3,4 mm
- Total thickness: ± 7,1 mm
- Wear classification: 33 / LC1
- Fire classification: Bfl-s1
- Impact sound reduction: ΔLw = 28 dB
- Sound absorption: 0,15 αw
- GUT-Prodís number: E4C2F79C


**975** LRV: 23,93 - L 54,94

**685** LRV: 5,19 - L 26,48

**789** LRV: 15,48 - L 49,29

**569** LRV: 8,75 - L 39,11

**848** LRV: 6,41 - L 28,26

**545** LRV: 16,32 - L 49,28

**988** LRV: 2,70 - L 20,68

**911** LRV: 22,14 - L 49,80

**363** LRV: 3,76 - L 21,08

**959** LRV: 8,92 - L 29,14

**273** LRV: 8,08 - L 34,74

**989** LRV: 3,40 - L 23,02

LRV = Light Reflectance Value according to BS 8493, L = according to CIE L\*a\*b\* colour space





955 - 977 - 979

# Clay Create

Rudiments

- Construction: tufted 1/12" gauge loop
- Backing: EcoFlex™ Statera
- Pile material: 100% solution dyed nylon
- Dimensions - m<sup>2</sup>/box: 25 x 100 cm - 5 m<sup>2</sup>
- Pile weight: ± 600 g/m<sup>2</sup>
- Pile thickness: ± 3,4 mm
- Total thickness: ± 7,1 mm
- Wear classification: 33 / LC1
- Fire classification: Bfl-s1
- Impact sound reduction: ΔLw = 28 dB
- Sound absorption: 0,15 aw
- GUT-Prodix number: 5E8698AB



977 LRV: 23,40 - L 54,85



699 LRV: 3,14 - L 22,84



872 LRV: 12,76 - L 39,73



599 LRV: 3,03 - L 27,35



887 LRV: 2,97 - L 20,00



556 LRV: 11,63 - L 39,77



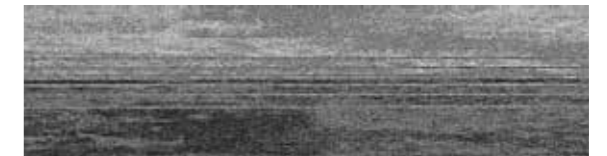
987 LRV: 5,01 - L 21,47



594 LRV: 16,70 - L 52,41



339 LRV: 3,48 - L 23,56



955 LRV: 10,18 - L 36,61



325 LRV: 7,46 - L 35,11



979 LRV: 4,79 - L 29,01

LRV = Light Reflectance Value according to BS 8493, L = according to CIE L\*a\*b\* colour space





Clay 569

Metallic Clay  
559 - 919

# Metallic Clay Rudiments

- Construction: tufted 1/12" gauge loop
- Backing: EcoFlex™ Statera
- Pile material: 100% solution dyed nylon
- Dimensions - m<sup>2</sup>/box: 25 x 100 cm - 5 m<sup>2</sup>
- Pile weight: ± 600 g/m<sup>2</sup>
- Pile thickness: ± 3,4 mm
- Total thickness: ± 7,1 mm
- Wear classification: 33 / LC1
- Fire classification: Bfl-s1
- Impact sound reduction: ΔLw = 26 dB
- Sound absorption: 0,20 aw
- GUT-Prodix number: 9ADE6ED5



LRV = Light Reflectance Value according to BS 8493, L = according to CIE L\*a\*b\* colour space





955 □

## Step Up

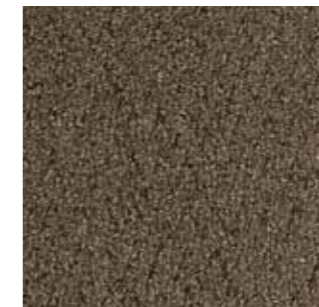
- Construction: 5/32" Tip Sheared
- Backing: EcoFlex™ NXT
- Pile material: 100% Duracolor® Premium Nylon (30% recycled content)
- Dimensions - m<sup>2</sup>/box: 60,96 cm x 60,96 cm - 5,2 m<sup>2</sup>
- Pile weight: ± 1288 g/m<sup>2</sup>
- Pile thickness: ± 5,2 mm
- Total thickness: ± 9 mm
- Wear classification: 33 / LC3
- Fire classification: Bfl-s1
- Impact sound reduction: ΔL<sub>w</sub> = 29dB
- Sound absorption: In progress
- GUT-Prodís number: In progress



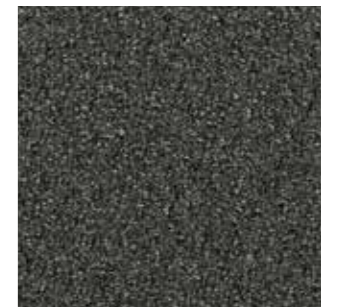
955 LRV: 5,16



989 LRV: 2,51



859 LRV: 4,52



983 LRV: 3,20

LRV = Light Reflectance Value according to BS 8493, L = according to CIE L\*a\*b\* colour space









# Innovative secondary backing

## EcoFlex™ Echo

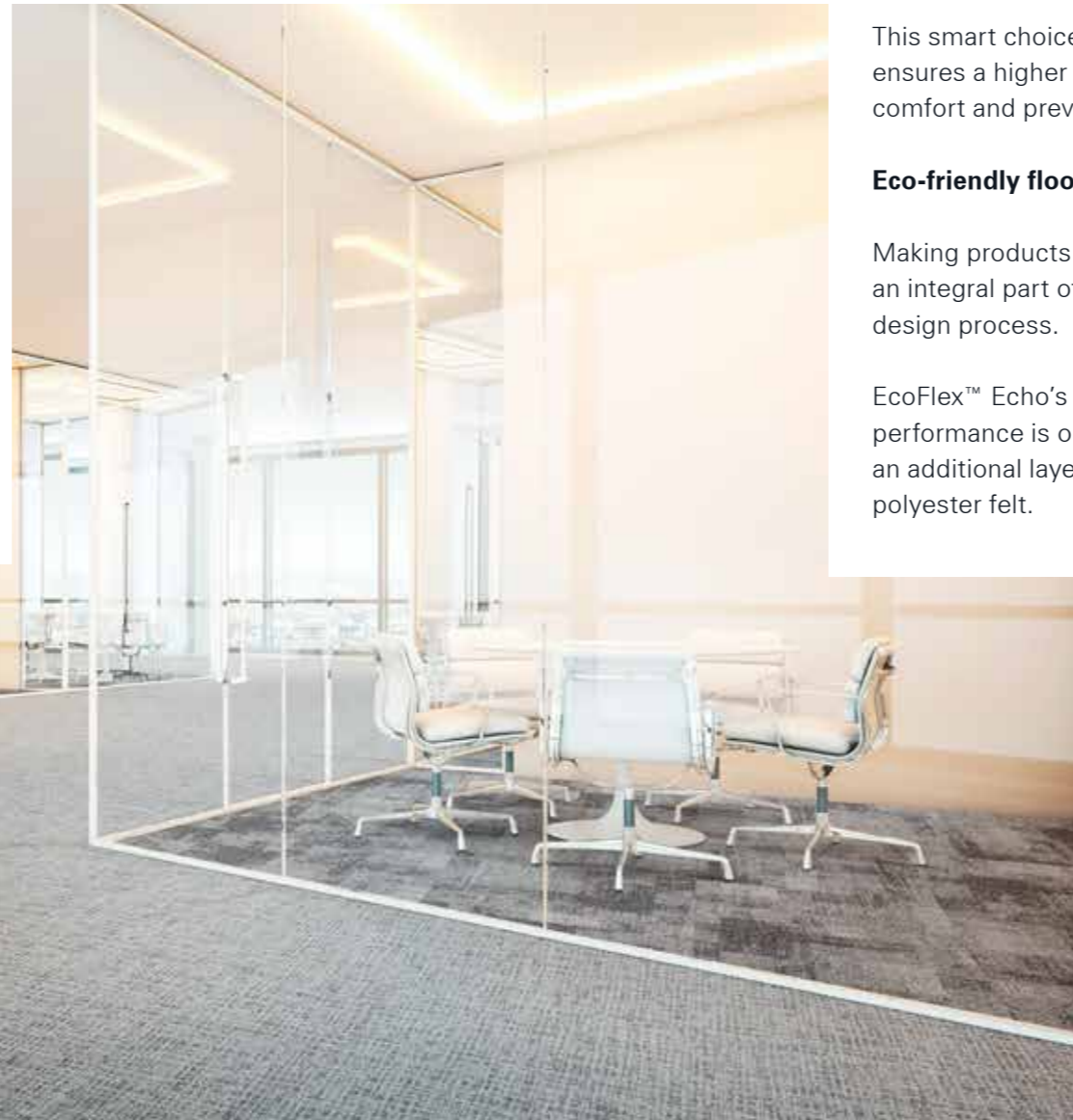
### Backing every flooring project

At Mohawk Group we believe everyone is entitled to better acoustics and ergonomic comfort. That's why we've developed a superior backing that considers acoustic insulation, sound absorption and underfoot comfort.

So, when there's need for specific technical requirements regarding the acoustics of a space, EcoFlex™ Echo provides the answer.

Offering improved levels of impact sound reduction and sound absorption, EcoFlex™ Echo carpet tiles are built to last. Tested in accordance with the EN1307 standard, EcoFlex™ Echo delivers high quality in all aspects, from dimensional stability and burning behaviour to a perfect seam finish.

Standard Mohawk Group Carpet Tiles with the EcoFlex™ Statera backing system are also developed with attention to acoustic properties. They offer a qualitative solution for projects where no specific values are required.



### Going beyond acoustics

#### Composed for improved comfort

Dedicated to the future of flooring and the lasting comfort of our customers, we are continuously committed to ensuring the long-term quality of our products.

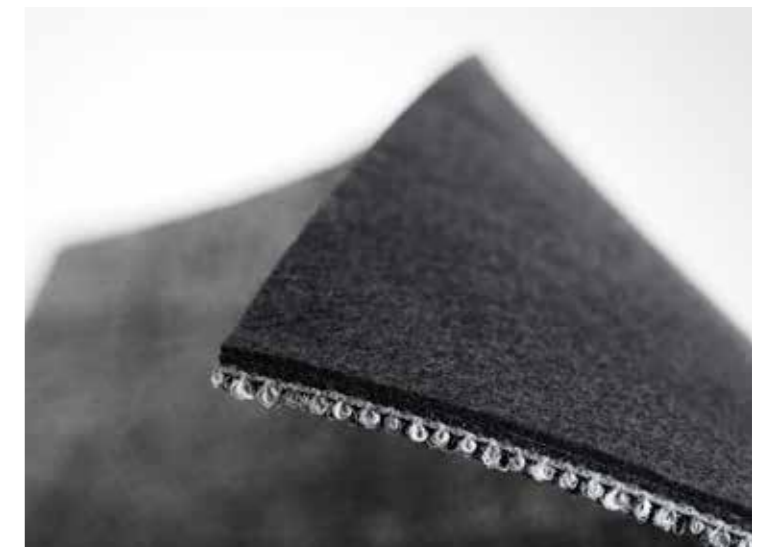
This smart choice of material also ensures a higher level of underfoot comfort and prevents muscle fatigue.

#### Eco-friendly flooring

Making products more sustainable is an integral part of our innovation and design process.

EcoFlex™ Echo's improved acoustic performance is obtained through an additional layer of 94% recycled polyester felt.

Improved performance and underfoot comfort is obtained through a **94% recycled polyester felt** layer







# Easy installation Flawless combinations

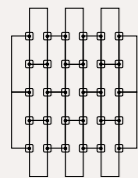
Finding the right floor for your project is one thing, but installing it can be a cumbersome process. Not to worry: Mohawk Group hands you the tools to ease this step.



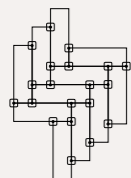
## FlexLok

The innovative FlexLok system is the ideal alternative to traditional adhesive installation methods. The odorless dry technique virtually eliminates harmful VOCs and can be used on all underlays, for all Mohawk Group Carpet Tiles. Rely on FlexLok for a fast, easy installation of flexible, floating floors, without any glue.

### Installing planks

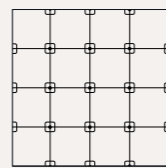


Lay the first row of planks and put FlexLok pads at each joint, adhesive side up. Install the remaining carpet tiles, placing FlexLok tabs as illustrated in the image.



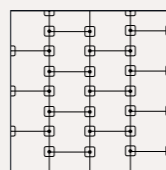
For herringbone designs, put FlexLok pads on each corner, adhesive side up.

### Installing tiles



#### Quarter turn, monolithic, and multi-directional

Put FlexLok pads at each corner of the tiles, adhesive side up.



#### Brick and Ashlar

Lay the first row of planks and put FlexLok pads at each joint, adhesive side up. Install the remaining carpet tiles, placing FlexLok tabs as illustrated in the image.





# How we strive to make an impact on well-being

We are committed to enhancing well-being for everyone connected to our products, from designers and installers to end-users, next to our own personnel. Our focus on well-being ensures that our carpet tiles not only adorn spaces but contribute to a healthier and more harmonious environment.

## Through our products



### Underfoot Comfort

Recognizing the significant impact of underfoot comfort on overall employee well-being, we have pioneered a method to objectively assess and differentiate products based on their comfort levels. Herewith reducing muscle fatigue and promoting a healthier, more comfortable workplace.



### Acoustics

Acoustics are essential for a well-balanced space. Our EcoFlex™ Echo carpet tile backing showcases our dedication to wellbeing through superior impact sound insulation and improved sound absorption.



### Indoor Air Quality

Recognizing the importance of indoor air quality in interior environments, our carpet tiles adhere to some of the strictest indoor emission labels, thereby mitigating health risks for end-users.

## Through our Culture

### 01. Zero Harm

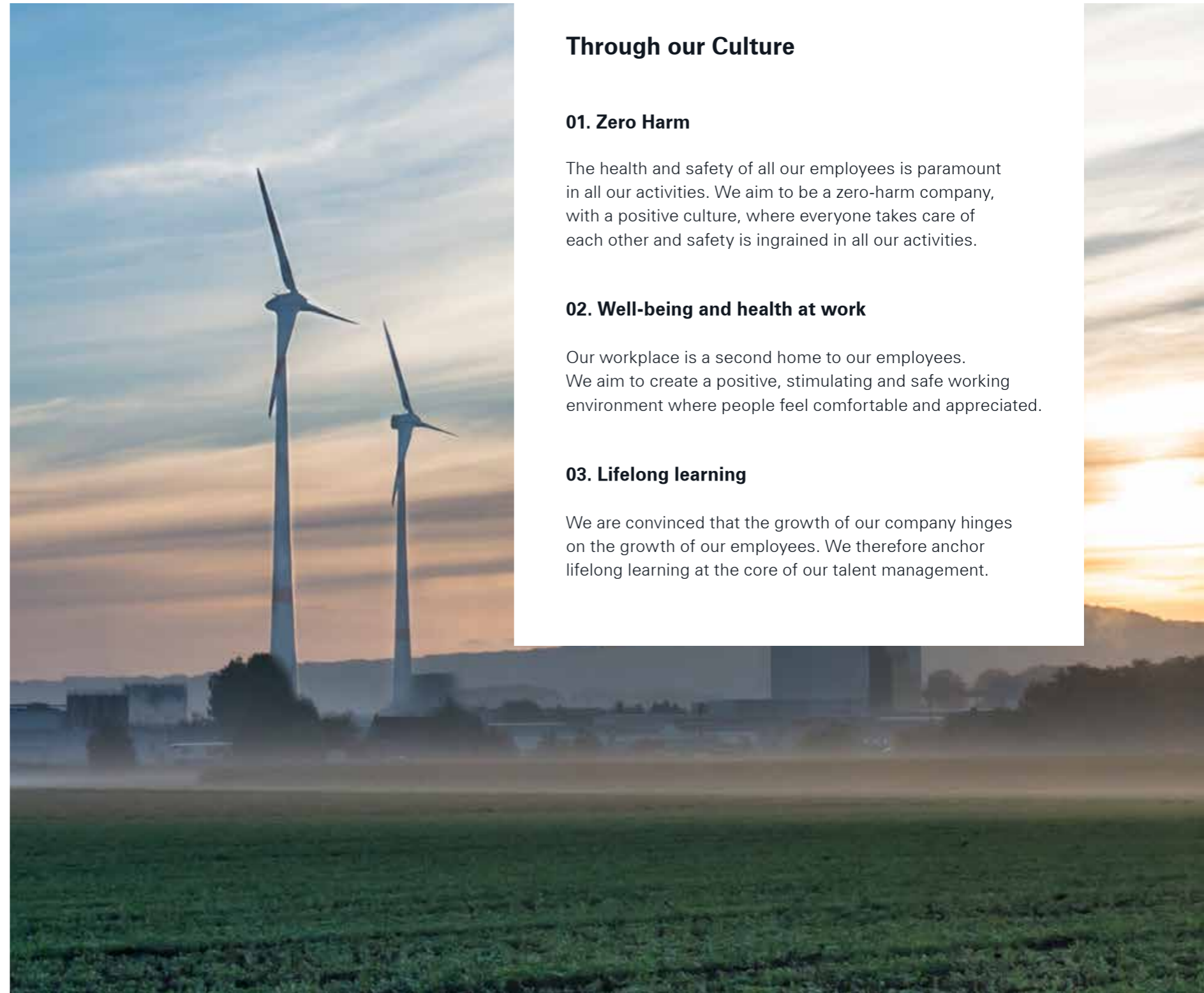
The health and safety of all our employees is paramount in all our activities. We aim to be a zero-harm company, with a positive culture, where everyone takes care of each other and safety is ingrained in all our activities.

### 02. Well-being and health at work

Our workplace is a second home to our employees. We aim to create a positive, stimulating and safe working environment where people feel comfortable and appreciated.

### 03. Lifelong learning

We are convinced that the growth of our company hinges on the growth of our employees. We therefore anchor lifelong learning at the core of our talent management.





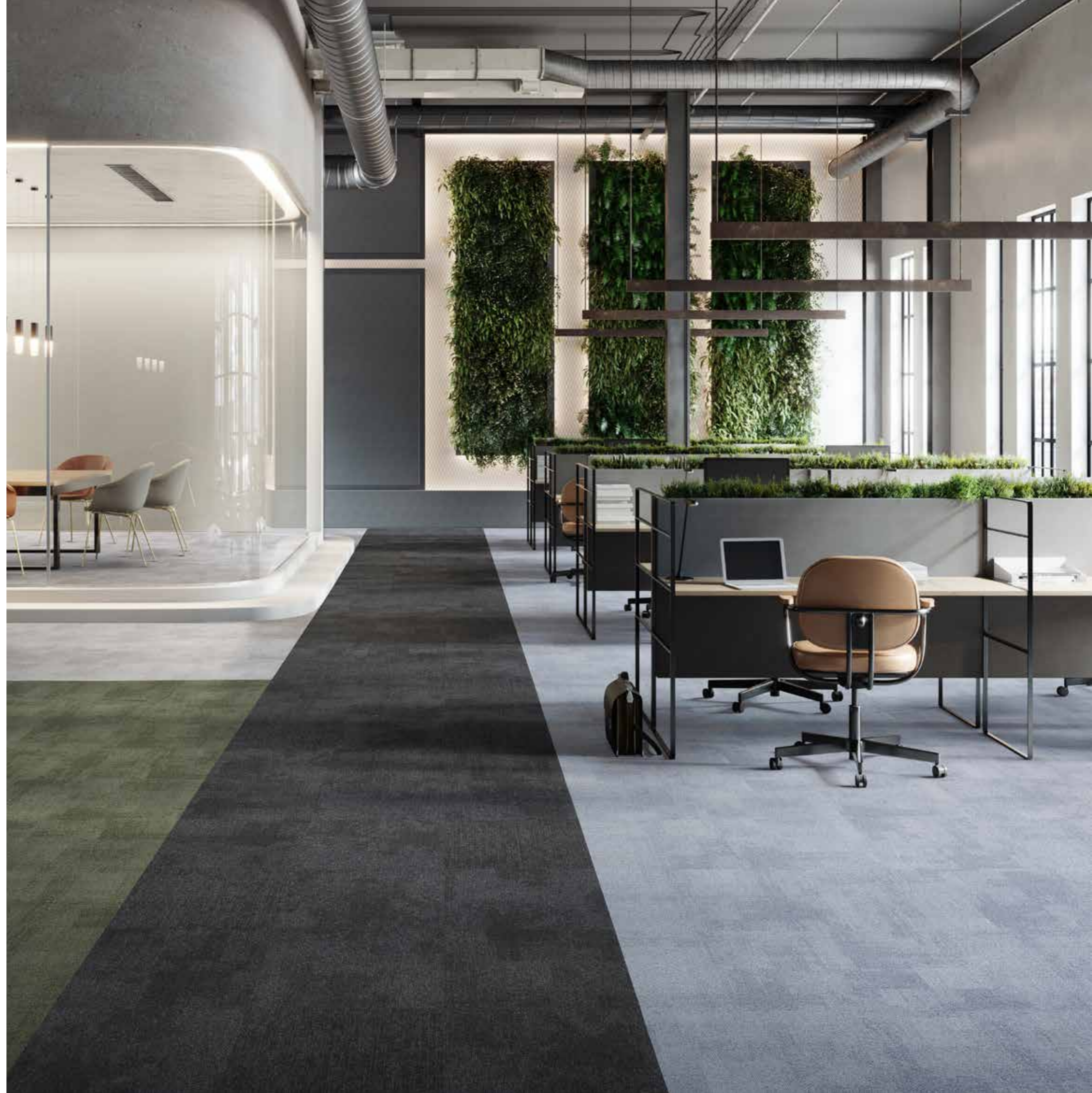


## Get in touch

Want to learn more about Mohawk Group commercial flooring solutions, or need help tackling an exciting project? We've got you covered.

Go to [mohawkgroup.eu](https://mohawkgroup.eu) to browse our collections, order samples, download inspirational brochures or stop by one of our showrooms. You can also make an appointment with our dedicated team by sending us an email via [info@mohawkgroup.eu](mailto:info@mohawkgroup.eu). Get in touch!

Follow us on    





# Technical Specifications

Spécifications techniques - Technische specificaties - Technische Spezifikationen

<b>Construction</b> Structure - Structuur - Konstruktion	
<b>Pile fibre composition</b> Composition des fibres - Poolmateriaal - Material der Polnutzschicht	
<b>Secondary backing</b> Envers - Rug - Beschichtung	
<b>Total weight</b> Poids total - Totaal gewicht - Gesamtgewicht	
<b>Pile weight</b> Poids du velours - Poolgewicht - Poleinsatzgewicht	
<b>Surface pile weight</b> Poids du velours utile - Effectieve poolmassa - Polnutzschichtgewicht	
<b>Total thickness</b> Epaisseur totale - Totale dikte - Gesamtdicke	
<b>Surface pile thickness</b> Hauteur du velours - Poolhoogte - Poldicke	
<b>Surface pile density</b> Densité du velours - Pooldichtheid - Polrohdichte	
<b>Number of tufts</b> Nombre de boucles - Aantal noppen - Noppenzahl	
<b>Wear classification</b> Classement d'usage - Gebruiksklasse - Beanspruchungsklasse	EN 1307
<b>Castor chair suitability</b> Résistance aux chaises à roulettes - Rolstoelgeschiktheid - Stuhlrolleneignung	EN 985
<b>Fire classification</b> Comportement au feu - Brandgedrag - Brandklasse	EN 13501-1
<b>Dimensional stability</b> Stabilité dimensionnelle - Dimensionele stabiliteit - Dimensionsstabilität	EN 986
<b>Colour fastness to light</b> Solidité des couleurs à la lumière - Lichtbestendigheid van de kleuren - Lichtechtheit	EN ISO 105-B02
<b>Rubbing fastness</b> Solidité au frottement - Wrijfechtheid - Reibechtheit	EN ISO 105-X12
<b>Colour fastness to water</b> Solidité à l'eau - Waterechtheid - Wasserechtheit	EN ISO 105-E01
<b>Thermal resistance</b> Résistance thermique - Warmteoorlaatweerstand - Wärmedurchlasswiderstand	ISO 8302
<b>Sound absorption</b> Absorption phonique - Geluidsabsorptie - Schallabsorptionsgrad	EN ISO 354
<b>Impact sound reduction</b> Réduction phonique aux bruits d'impacts - Reductie contactgeluid - Trittschallverbesserungsmaß	EN ISO 10140-3
<b>Permanent antistatic</b> Antistatique permanent - Permanent antistatisch - Permanent antistatisch	ISO 6356
<b>Number of colours</b> Nombre de coloris - Aantal kleuren - Anzahl der Farben	
<b>Size &amp; Packaging</b> Dimensions & Emballage - Formaat en verpakking - Abmessungen & Verpackung	
<b>GUT-Prodis Number</b> Numéro GUT Prodis - Nummer GUT Prodis - GUT-Prodis Nummer	
<b>Warranty years</b> Garantie ans - Garantie in jaren - Garantie Jahren	



Tufted 1/10" gauge loop
100% solution dyed nylon
EcoFlex™ Statera (modified bitumen, 70% recycled content)
± 4100 g/m <sup>2</sup>
± 540 g/m <sup>2</sup>
± 370 g/m <sup>2</sup>
± 6,3 mm
± 3,1 mm
± 0,119 g/cm <sup>3</sup>
176.300/ m <sup>2</sup>
33 / LC1
A: intensive use
Bfl-s1
≤ 0,20%
≥ 7
≥ 4
≥ 4
0,072 m <sup>2</sup> .K/W
0,15 aw
Hz 125 250 500 1000 2000 4000 as -0,01 0,00 0,06 0,17 0,25 0,34
ΔLw = 32 dB
≤ 2 kV
32
50 x 50 cm 5 m <sup>2</sup> /box - 24 boxes/pallet
3AA1D4DF
15

## Expansion Point

Tufted 1/10" gauge loop
100% solution dyed nylon
EcoFlex™ Statera (modified bitumen, 70% recycled content)
± 4300 g/m <sup>2</sup>
± 540 g/m <sup>2</sup>
± 401 g/m <sup>2</sup>
± 6,6 mm
± 3,3 mm
± 0,123 g/cm <sup>3</sup>
172.200/ m <sup>2</sup>
33 / LC2
A: intensive use
Bfl-s1
≤ 0,2%
≥ 7
≥ 4
≥ 4
0,0687 m <sup>2</sup> .K/W
0,15 aw
Hz 125 250 500 1000 2000 4000 as -0,03 0,07 0,06 0,18 0,37 0,44
ΔLw = 27 dB
≤ 2 kV
12
50 x 50 cm 5 m <sup>2</sup> /box - 24 boxes/pallet
F6619831
15

## Blurred Edge

Tufted 1/10" gauge loop
100% solution dyed nylon
EcoFlex™ Statera (modified bitumen, 70% recycled content)
± 5000 g/m <sup>2</sup>
± 540 g/m <sup>2</sup>
± 310 g/m <sup>2</sup>
± 6,6 mm
± 2,5 mm
± 0,124 g/cm <sup>3</sup>
168.100/m <sup>2</sup>
33 / LC1
A: intensive use
Bfl-s1
≤ 0,2%
≥ 7
≥ 4
≥ 4
0,0643 m <sup>2</sup> .K/w
0,15 aw
Hz 125 250 500 1000 2000 4000 aw 0,02 0,03 0,06 0,19 0,31 0,37
ΔLw = 25 dB
≤ 2 kV
10
50 x 50 cm 5 m <sup>2</sup> /box - 24 boxes/pallet
Ongoing
15





# Technical Specifications

Spécifications techniques - Technische specificaties - Technische Spezifikationen

<b>Construction</b> Structure - Structuur - Konstruktion	
<b>Pile fibre composition</b> Composition des fibres - Poolmateriaal - Material der Polnutschicht	
<b>Secondary backing</b> Envers - Rug - Beschichtung	
<b>Total weight</b> Poids total - Totaal gewicht - Gesamtgewicht	
<b>Pile weight</b> Poids du velours - Poolgewicht - Poleinsatzgewicht	
<b>Surface pile weight</b> Poids du velours utile - Effectieve poolmassa - Polnutschichtgewicht	
<b>Total thickness</b> Epaisseur totale - Totale dikte - Gesamtdicke	
<b>Surface pile thickness</b> Hauteur du velours - Poolhoogte - Poldicke	
<b>Surface pile density</b> Densité du velours - Pooldichtheid - Polrohdichte	
<b>Number of tufts</b> Nombre de boucles - Aantal noppen - Noppenzahl	
<b>Wear classification</b> Classement d'usage - Gebruiksklasse - Beanspruchungsklasse	EN 1307
<b>Castor chair suitability</b> Résistance aux chaises à roulettes - Rolstoelgeschiktheid - Stuhlrolleneignung	EN 985
<b>Fire classification</b> Comportement au feu - Brandgedrag - Brandklasse	EN 13501-1
<b>Dimensional stability</b> Stabilité dimensionnelle - Dimensionele stabiliteit - Dimensionsstabilität	EN 986
<b>Colour fastness to light</b> Solidité des couleurs à la lumière - Lichtbestendigheid van de kleuren - Lichtechtheit	EN ISO 105-B02
<b>Rubbing fastness</b> Solidité au frottement - Wrijftechtheid - Reibechtheit	EN ISO 105-X12
<b>Colour fastness to water</b> Solidité à l'eau - Waterechtheid - Wasserechtheit	EN ISO 105-E01
<b>Thermal resistance</b> Résistance thermique - Warmteoorlaatweerstand - Wärmedurchlasswiderstand	ISO 8302
<b>Sound absorption</b> Absorption phonique - Geluidsabsorptie - Schallabsorptionsgrad	EN ISO 354
<b>Impact sound reduction</b> Réduction phonique aux bruits d'impacts - Reductie contactgeluid - Trittschallverbesserungsmaß	EN ISO 10140-3
<b>Permanent antistatic</b> Antistatique permanent - Permanent antistatisch - Permanent antistatisch	ISO 6356
<b>Number of colours</b> Nombre de coloris - Aantal kleuren - Anzahl der Farben	
<b>Size &amp; Packaging</b> Dimensions & Emballage - Formaat en verpakking - Abmessungen & Verpackung	
<b>GUT-Prodís Number</b> Numéro GUT Prodis - Nummer GUT Prodis - GUT-Prodís Nummer	
<b>Warranty years</b> Garantie ans - Garantie in jaren - Garantie Jahren	

Perspective	View	Step Up
Tufted 1/12" gauge loop	Tufted 1/12" gauge loop	5/32" Tip Sheared
100% solution dyed nylon	100% solution dyed nylon	100% Duracolor® Premium Nylon (30% recycled content)
EcoFlex™ Statera (modified bitumen, 70% recycled content)	EcoFlex™ Statera (modified bitumen, 70% recycled content)	EcoFlex™ NXT
± 4400 g/m <sup>2</sup>	± 4400 g/m <sup>2</sup>	± 4575 g/m <sup>2</sup>
± 600 g/m <sup>2</sup>	± 600 g/m <sup>2</sup>	± 1288 g/m <sup>2</sup>
± 380 g/m <sup>2</sup>	± 388 g/m <sup>2</sup>	± 754 g/m <sup>2</sup>
± 6,4 mm	± 6,4 mm	± 9 mm
± 3,1 mm	± 3,1 mm	± 5,2 mm
± 0,123 g/cm <sup>3</sup>	± 0,125 g/cm <sup>3</sup>	± 0,145 g/cm <sup>3</sup>
209.100/m <sup>2</sup>	229.500/m <sup>2</sup>	93.600/m <sup>2</sup>
33 / LC1	33 / LC1	33 / LC3
A: intensive use	A: intensive use	A: intensive use
Bfl-s1	Bfl-s1	Bfl-s1
≤ 0,2%	≤ 0,2%	≤ 0,2%
≥ 7	≥ 7	≥ 7
≥ 4	≥ 4	≥ 4
≥ 4	≥ 4	≥ 4
0,068 m <sup>2</sup> .K/W	0,067 m <sup>2</sup> .K/W	0,099 m <sup>2</sup> .K/W
0,15 αw	0,15 αw	In progress
Hz 125 250 500 1000 2000 4000 αs 0,00 0,02 0,06 0,20 0,33 0,42	Hz 125 250 500 1000 2000 4000 αs 0,00 0,02 0,06 0,20 0,30 0,39	
ΔLw = 25 dB	ΔLw = 25 dB	ΔLw = 29dB
≤ 2 kV	≤ 2 kV	≤ 2 kV
8	8	4
50 x 50 cm 5 m <sup>2</sup> /box - 24 boxes/pallet	50 x 50 cm 5 m <sup>2</sup> /box - 24 boxes/pallet	60,96 cm x 60,96 cm (24"x24") 5,2 m <sup>2</sup> /box
6119BCAA	CAC6CFE5	Ongoing
15	15	15





# Technical Specifications

Spécifications techniques - Technische specificaties - Technische Spezifikationen

<b>Construction</b> Structure - Structuur - Konstruktion	
<b>Pile fibre composition</b> Composition des fibres - Poolmateriaal - Material der Polnutschicht	
<b>Secondary backing</b> Envers - Rug - Beschichtung	
<b>Total weight</b> Poids total - Totaal gewicht - Gesamtgewicht	
<b>Pile weight</b> Poids du velours - Poolgewicht - Poleinsatzgewicht	
<b>Surface pile weight</b> Poids du velours utile - Effectieve poolmassa - Polnutschichtgewicht	
<b>Total thickness</b> Epaisseur totale - Totale dikte - Gesamtdicke	
<b>Surface pile thickness</b> Hauteur du velours - Poolhoogte - Poldicke	
<b>Surface pile density</b> Densité du velours - Pooldichtheid - Polrohdichte	
<b>Number of tufts</b> Nombre de boucles - Aantal noppen - Noppenzahl	
<b>Wear classification</b> Classement d'usage - Gebruiksklasse - Beanspruchungsklasse	EN 1307
<b>Castor chair suitability</b> Résistance aux chaises à roulettes - Rolstoelgeschiktheid - Stuhlrolleneignung	EN 985
<b>Fire classification</b> Comportement au feu - Brandgedrag - Brandklasse	EN 13501-1
<b>Dimensional stability</b> Stabilité dimensionnelle - Dimensionele stabiliteit - Dimensionsstabilität	EN 986
<b>Colour fastness to light</b> Solidité des couleurs à la lumière - Lichtbestendigheid van de kleuren - Lichtechtheit	EN ISO 105-B02
<b>Rubbing fastness</b> Solidité au frottement - Wrijfechtheid - Reibechtheit	EN ISO 105-X12
<b>Colour fastness to water</b> Solidité à l'eau - Waterechtheid - Wasserechtheit	EN ISO 105-E01
<b>Thermal resistance</b> Résistance thermique - Warmteoorlaatweerstand - Wärmedurchlasswiderstand	ISO 8302
<b>Sound absorption</b> Absorption phonique - Geluidsabsorptie - Schallabsorptionsgrad	EN ISO 354
<b>Impact sound reduction</b> Réduction phonique aux bruits d'impacts - Reductie contactgeluid - Trittschallverbesserungsmaß	EN ISO 10140-3
<b>Permanent antistatic</b> Antistatique permanent - Permanent antistatisch - Permanent antistatisch	ISO 6356
<b>Number of colours</b> Nombre de coloris - Aantal kleuren - Anzahl der Farben	
<b>Size &amp; Packaging</b> Dimensions & Emballage - Formaat en verpakking - Abmessungen & Verpackung	
<b>GUT-Prodis Number</b> Numéro GUT Prodis - Nummer GUT Prodis - GUT-Prodis Nummer	
<b>Warranty years</b> Garantie ans - Garantie in jaren - Garantie Jahren	

## Balanced

Tufted 1/12" gauge loop														
100% SDN Thrive® Matter (90% recycled content)														
EcoFlex™ Statera (modified bitumen, 70% recycled content)														
+/- 4400 g/m <sup>2</sup>														
+/- 720 g/m <sup>2</sup>														
+/- 466 g/m <sup>2</sup>														
+/- 7,0 mm														
+/- 3,5 mm														
+/- 0,133 g/cm <sup>3</sup>														
230.000/m <sup>2</sup>														
33 / LC2														
A: intensive use														
Bfl-s1														
≤ 0,2%														
≥ 7														
≥ 4														
≥ 4														
0,070 m <sup>2</sup> .K/W														
0,20 aw														
<table border="1"> <tr> <td>Hz</td> <td>125</td> <td>250</td> <td>500</td> <td>1000</td> <td>2000</td> <td>4000</td> </tr> <tr> <td>as</td> <td>0,00</td> <td>0,02</td> <td>0,07</td> <td>0,19</td> <td>0,29</td> <td>0,41</td> </tr> </table>	Hz	125	250	500	1000	2000	4000	as	0,00	0,02	0,07	0,19	0,29	0,41
Hz	125	250	500	1000	2000	4000								
as	0,00	0,02	0,07	0,19	0,29	0,41								
ΔLw = 25 dB														
≤ 2 kV														
16														
50 x 50 cm 4,5 m <sup>2</sup> /box - 24 boxes/pallet														
Ongoing														
15														

## Tailored

Tufted 1/12" gauge loop														
100% SDN Thrive® Matter (90% recycled content)														
EcoFlex™ Statera (modified bitumen, 70% recycled content)														
+/- 4400 g/m <sup>2</sup>														
+/- 720 g/m <sup>2</sup>														
+/- 474 g/m <sup>2</sup>														
+/- 6,9 mm														
+/- 3,7 mm														
+/- 0,128 g/cm <sup>3</sup>														
230.000/m <sup>2</sup>														
33 / LC2														
A: intensive use														
Bfl-s1														
≤ 0,2%														
≥ 7														
≥ 4														
≥ 4														
0,080 m <sup>2</sup> .K/W														
0,20 aw														
<table border="1"> <tr> <td>Hz</td> <td>125</td> <td>250</td> <td>500</td> <td>1000</td> <td>2000</td> <td>4000</td> </tr> <tr> <td>as</td> <td>0,00</td> <td>0,02</td> <td>0,07</td> <td>0,19</td> <td>0,29</td> <td>0,41</td> </tr> </table>	Hz	125	250	500	1000	2000	4000	as	0,00	0,02	0,07	0,19	0,29	0,41
Hz	125	250	500	1000	2000	4000								
as	0,00	0,02	0,07	0,19	0,29	0,41								
ΔLw = 25 dB														
≤ 2 kV														
16														
50 x 50 cm 4,5 m <sup>2</sup> /box - 24 boxes/pallet														
Ongoing														
15														

## Unchained

Tufted 1/12" gauge loop														
100% SDN Thrive® Matter (90% recycled content)														
EcoFlex™ Statera (modified bitumen, 70% recycled content)														
+/- 4400 g/m <sup>2</sup>														
+/- 720 g/m <sup>2</sup>														
+/- 511 g/m <sup>2</sup>														
+/- 7,1 mm														
+/- 3,4 mm														
+/- 0,150 g/cm <sup>3</sup>														
244.800/m <sup>2</sup>														
33 / LC2														
A: intensive use														
Bfl-s1														
≤ 0,2%														
≥ 7														
≥ 4														
≥ 4														
0,080 m <sup>2</sup> .K/W														
0,20 aw														
<table border="1"> <tr> <td>Hz</td> <td>125</td> <td>250</td> <td>500</td> <td>1000</td> <td>2000</td> <td>4000</td> </tr> <tr> <td>as</td> <td>0,00</td> <td>0,02</td> <td>0,07</td> <td>0,19</td> <td>0,29</td> <td>0,41</td> </tr> </table>	Hz	125	250	500	1000	2000	4000	as	0,00	0,02	0,07	0,19	0,29	0,41
Hz	125	250	500	1000	2000	4000								
as	0,00	0,02	0,07	0,19	0,29	0,41								
ΔLw = 25 dB														
≤ 2 kV														
16														
50 x 50 cm 4,5 m <sup>2</sup> /box - 24 boxes/pallet														
Ongoing														
15														





# Technical Specifications

Spécifications techniques - Technische specificaties - Technische Spezifikationen

<b>Construction</b> Structure - Structuur - Konstruktion	
<b>Pile fibre composition</b> Composition des fibres - Poolmateriaal - Material der Polnutschicht	
<b>Secondary backing</b> Envers - Rug - Beschichtung	
<b>Total weight</b> Poids total - Totaal gewicht - Gesamtgewicht	
<b>Pile weight</b> Poids du velours - Poolgewicht - Poleinsatzgewicht	
<b>Surface pile weight</b> Poids du velours utile - Effectieve poolmassa - Polnutschichtgewicht	
<b>Total thickness</b> Epaisseur totale - Totale dikte - Gesamtdicke	
<b>Surface pile thickness</b> Hauteur du velours - Poolhoogte - Poldicke	
<b>Surface pile density</b> Densité du velours - Pooldichtheid - Polrohdichte	
<b>Number of tufts</b> Nombre de boucles - Aantal noppen - Noppenzahl	
<b>Wear classification</b> Classement d'usage - Gebruiksklasse - Beanspruchungsklasse	EN 1307
<b>Castor chair suitability</b> Résistance aux chaises à roulettes - Rolstoelgeschiktheid - Stuhlrolleneignung	EN 985
<b>Fire classification</b> Comportement au feu - Brandgedrag - Brandklasse	EN 13501-1
<b>Dimensional stability</b> Stabilité dimensionnelle - Dimensionele stabiliteit - Dimensionsstabilität	EN 986
<b>Colour fastness to light</b> Solidité des couleurs à la lumière - Lichtbestendigheid van de kleuren - Lichtechtheit	EN ISO 105-B02
<b>Rubbing fastness</b> Solidité au frottement - Wrijfechtheid - Reibechtheit	EN ISO 105-X12
<b>Colour fastness to water</b> Solidité à l'eau - Waterechtheid - Wasserechtheit	EN ISO 105-E01
<b>Thermal resistance</b> Résistance thermique - Warmteoorlaatweerstand - Wärmedurchlasswiderstand	ISO 8302
<b>Sound absorption</b> Absorption phonique - Geluidsabsorptie - Schallabsorptionsgrad	EN ISO 354
<b>Impact sound reduction</b> Réduction phonique aux bruits d'impacts - Reductie contactgeluid - Trittschallverbesserungsmaß	EN ISO 10140-3
<b>Permanent antistatic</b> Antistatique permanent - Permanent antistatisch - Permanent antistatisch	ISO 6356
<b>Number of colours</b> Nombre de coloris - Aantal kleuren - Anzahl der Farben	
<b>Size &amp; Packaging</b> Dimensions & Emballage - Formaat en verpakking - Abmessungen & Verpackung	
<b>GUT-Prodis Number</b> Numéro GUT Prodis - Nummer GUT Prodis - GUT-Prodis Nummer	
<b>Warranty years</b> Garantie ans - Garantie in jaren - Garantie Jahren	

Alternate	Liberate	Animate
Tufted 1/12" gauge loop	Tufted 1/12" gauge loop	Tufted 1/12" gauge loop
100% SDN Thrive® Matter (90% recycled content)	100% SDN Thrive® Matter (90% recycled content)	100% SDN Thrive® Matter (90% recycled content)
EcoFlex™ Statera (modified bitumen, 70% recycled content)	EcoFlex™ Statera (modified bitumen, 70% recycled content)	EcoFlex™ Statera (modified bitumen, 70% recycled content)
± 4500 g/m <sup>2</sup>	± 4500 g/m <sup>2</sup>	± 4500 g/m <sup>2</sup>
± 700 g/m <sup>2</sup>	± 700 g/m <sup>2</sup>	± 700 g/m <sup>2</sup>
± 484 g/m <sup>2</sup>	± 489 g/m <sup>2</sup>	± 433 g/m <sup>2</sup>
± 7,0 mm	± 7,3 mm	± 7,2 mm
± 3,4 mm	± 3,6 mm	± 3,3 mm
± 0,142 g/cm <sup>3</sup>	± 0,136 g/cm <sup>3</sup>	± 0,132 g/cm <sup>3</sup>
224.400/m <sup>2</sup>	234.600/m <sup>2</sup>	234.600/m <sup>2</sup>
33 / LC2	33 / LC2	33 / LC2
A: intensive use	A: intensive use	A: intensive use
Bfl-s1	Bfl-s1	Bfl-s1
≤ 0,2%	≤ 0,2%	≤ 0,2%
≥ 7	≥ 7	≥ 7
≥ 4	≥ 4	≥ 4
≥ 4	≥ 4	≥ 4
0,072 m <sup>2</sup> .K/W	0,075 m <sup>2</sup> .K/W	0,068 m <sup>2</sup> .K/W
0,15 αw	0,15 αw	0,15 αw
Hz 125 250 500 1000 2000 4000 αs -0,01 0,02 0,06 0,20 0,32 0,48	Hz 125 250 500 1000 2000 4000 αs 0,00 0,03 0,06 0,21 0,34 0,54	Hz 125 250 500 1000 2000 4000 αs 0,00 0,02 0,06 0,20 0,30 0,47
ΔLw = 24 dB	ΔLw = 25 dB	ΔLw = 24 dB
≤ 2 kV	≤ 2 kV	≤ 2 kV
18	18	18
50 x 50 cm 4,5 m <sup>2</sup> /box - 24 boxes/pallet	50 x 50 cm 4,5 m <sup>2</sup> /box - 24 boxes/pallet	50 x 50 cm 4,5 m <sup>2</sup> /box - 24 boxes/pallet
Ongoing	Ongoing	Ongoing
15	15	15





# Technical Specifications

Spécifications techniques - Technische specificaties - Technische Spezifikationen

<b>Construction</b> Structure - Structuur - Konstruktion	
<b>Pile fibre composition</b> Composition des fibres - Poolmateriaal - Material der Polnutzschicht	
<b>Secondary backing</b> Envers - Rug - Beschichtung	
<b>Total weight</b> Poids total - Totaal gewicht - Gesamtgewicht	
<b>Pile weight</b> Poids du velours - Poolgewicht - Poleinsatzgewicht	
<b>Surface pile weight</b> Poids du velours utile - Effectieve poolmassa - Polnutzschichtgewicht	
<b>Total thickness</b> Epaisseur totale - Totale dikte - Gesamtdicke	
<b>Surface pile thickness</b> Hauteur du velours - Poolhoogte - Poldicke	
<b>Surface pile density</b> Densité du velours - Pooldichtheid - Polrohdichte	
<b>Number of tufts</b> Nombre de boucles - Aantal noppen - Noppenzahl	
<b>Wear classification</b> Classement d'usage - Gebruiksklasse - Beanspruchungsklasse	EN 1307
<b>Castor chair suitability</b> Résistance aux chaises à roulettes - Rolstoelgeschiktheid - Stuhlrolleneignung	EN 985
<b>Fire classification</b> Comportement au feu - Brandgedrag - Brandklasse	EN 13501-1
<b>Dimensional stability</b> Stabilité dimensionnelle - Dimensionele stabiliteit - Dimensionsstabilität	EN 986
<b>Colour fastness to light</b> Solidité des couleurs à la lumière - Lichtbestendigheid van de kleuren - Lichtechtheit	EN ISO 105-B02
<b>Rubbing fastness</b> Solidité au frottement - Wrijftechtheid - Reibechtheit	EN ISO 105-X12
<b>Colour fastness to water</b> Solidité à l'eau - Waterechtheid - Wasserechtheit	EN ISO 105-E01
<b>Thermal resistance</b> Résistance thermique - Warmtedoorlaatweerstand - Wärmedurchlasswiderstand	ISO 8302
<b>Sound absorption</b> Absorption phonique - Geluidsabsorptie - Schallabsorptionsgrad	EN ISO 354
<b>Impact sound reduction</b> Réduction phonique aux bruits d'impacts - Reductie contactgeluid - Trittschallverbesserungsmaß	EN ISO 10140-3
<b>Permanent antistatic</b> Antistatique permanent - Permanent antistatisch - Permanent antistatisch	ISO 6356
<b>Number of colours</b> Nombre de coloris - Aantal kleuren - Anzahl der Farben	
<b>Size &amp; Packaging</b> Dimensions & Emballage - Formaat en verpakking - Abmessungen & Verpackung	
<b>GUT-Prodís Number</b> Numéro GUT Prodis - Nummer GUT Prodis - GUT-Prodís Nummer	
<b>Warranty years</b> Garantie ans - Garantie in jaren - Garantie Jahren	

Grit	Bruut	Rupture
1/12" Pattern Perfect®	1/12" Pattern Perfect®	1/12" Pattern Perfect®
ECONYL® 100% regenerated nylon	ECONYL® 100% regenerated nylon	ECONYL® 100% regenerated nylon
EcoFlex™ Echo (94% recycled felt)	EcoFlex™ Echo (94% recycled felt)	EcoFlex™ Echo (94% recycled felt)
± 5001 g/m <sup>2</sup>	± 5001 g/m <sup>2</sup>	± 5001 g/m <sup>2</sup>
± 750 g/m <sup>2</sup>	± 780 g/m <sup>2</sup>	± 780 g/m <sup>2</sup>
± 510 g/m <sup>2</sup>	± 498 g/m <sup>2</sup>	± 486 g/m <sup>2</sup>
± 8,6 mm	± 8,7 mm	± 8,7 mm
± 3,2 mm	± 3,3 mm	± 3,3 mm
± 0,159 g/cm <sup>3</sup>	± 0,151 g/cm <sup>3</sup>	± 0,147 g/cm <sup>3</sup>
± 132.080/ m <sup>2</sup>	± 132.080/ m <sup>2</sup>	± 132.080/ m <sup>2</sup>
33 / LC2	33 / LC2	33 / LC2
A: intensive use	A: intensive use	A: intensive use
Bfl-s1	Bfl-s1	Bfl-s1
≤ 0,2%	≤ 0,2%	≤ 0,2%
≥ 7	≥ 7	≥ 7
≥ 4	≥ 4	≥ 4
≥ 4	≥ 4	≥ 4
0,115 m <sup>2</sup> .K/W	0,120 m <sup>2</sup> .K/W	0,114 m <sup>2</sup> .K/W
0,25 aw	0,30 aw	0,30 aw
Hz 125 250 500 1000 2000 4000 as 0,00 0,03 0,43 0,20 0,28 0,39	Hz 125 250 500 1000 2000 4000 as 0,00 0,03 0,33 0,25 0,36 0,55	Hz 125 250 500 1000 2000 4000 as 0,01 0,03 0,37 0,24 0,35 0,55
ΔLw = 29 dB	ΔLw = 31 dB	ΔLw = 30 dB
≤ 2 kV	≤ 2 kV	≤ 2 kV
12	12	12
25 x 100 cm 4 m <sup>2</sup> /box - 24 boxes/pallet	25 x 100 cm 4 m <sup>2</sup> /box - 24 boxes/pallet	25 x 100 cm 4 m <sup>2</sup> /box - 24 boxes/pallet
Ongoing	Ongoing	Ongoing
15	15	15



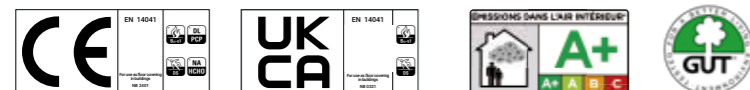


# Technical Specifications

Spécifications techniques - Technische specificaties - Technische Spezifikationen

<b>Construction</b> Structure - Structuur - Konstruktion	
<b>Pile fibre composition</b> Composition des fibres - Poolmateriaal - Material der Polnutzschicht	
<b>Secondary backing</b> Envers - Rug - Beschichtung	
<b>Total weight</b> Poids total - Totaal gewicht - Gesamtgewicht	
<b>Pile weight</b> Poids du velours - Poolgewicht - Poleinsatzgewicht	
<b>Surface pile weight</b> Poids du velours utile - Effectieve poolmassa - Polnutzschichtgewicht	
<b>Total thickness</b> Epaisseur totale - Totale dikte - Gesamtdicke	
<b>Surface pile thickness</b> Hauteur du velours - Poolhoogte - Poldicke	
<b>Surface pile density</b> Densité du velours - Pooldichtheid - Polrohdichte	
<b>Number of tufts</b> Nombre de boucles - Aantal noppen - Noppenzahl	
<b>Wear classification</b> Classement d'usage - Gebruiksklasse - Beanspruchungsklasse	EN 1307
<b>Castor chair suitability</b> Résistance aux chaises à roulettes - Rolstoelgeschiktheid - Stuhlrolleneignung	EN 985
<b>Fire classification</b> Comportement au feu - Brandgedrag - Brandklasse	EN 13501-1
<b>Dimensional stability</b> Stabilité dimensionnelle - Dimensionele stabiliteit - Dimensionsstabilität	EN 986
<b>Colour fastness to light</b> Solidité des couleurs à la lumière - Lichtbestendigheid van de kleuren - Lichtechtheit	EN ISO 105-B02
<b>Rubbing fastness</b> Solidité au frottement - Wrijftechtheid - Reibechtheit	EN ISO 105-X12
<b>Colour fastness to water</b> Solidité à l'eau - Waterechtheid - Wasserechtheit	EN ISO 105-E01
<b>Thermal resistance</b> Résistance thermique - Warmtedoorlaatweerstand - Wärmedurchlasswiderstand	ISO 8302
<b>Sound absorption</b> Absorption phonique - Geluidsabsorptie - Schallabsorptionsgrad	EN ISO 354
<b>Impact sound reduction</b> Réduction phonique aux bruits d'impacts - Reductie contactgeluid - Trittschallverbesserungsmaß	EN ISO 10140-3
<b>Permanent antistatic</b> Antistatique permanent - Permanent antistatisch - Permanent antistatisch	ISO 6356
<b>Number of colours</b> Nombre de coloris - Aantal kleuren - Anzahl der Farben	
<b>Size &amp; Packaging</b> Dimensions & Emballage - Formaat en verpakking - Abmessungen & Verpackung	
<b>GUT-Prodís Number</b> Numéro GUT Prodis - Nummer GUT Prodis - GUT-Prodís Nummer	
<b>Warranty years</b> Garantie ans - Garantie in jaren - Garantie Jahren	

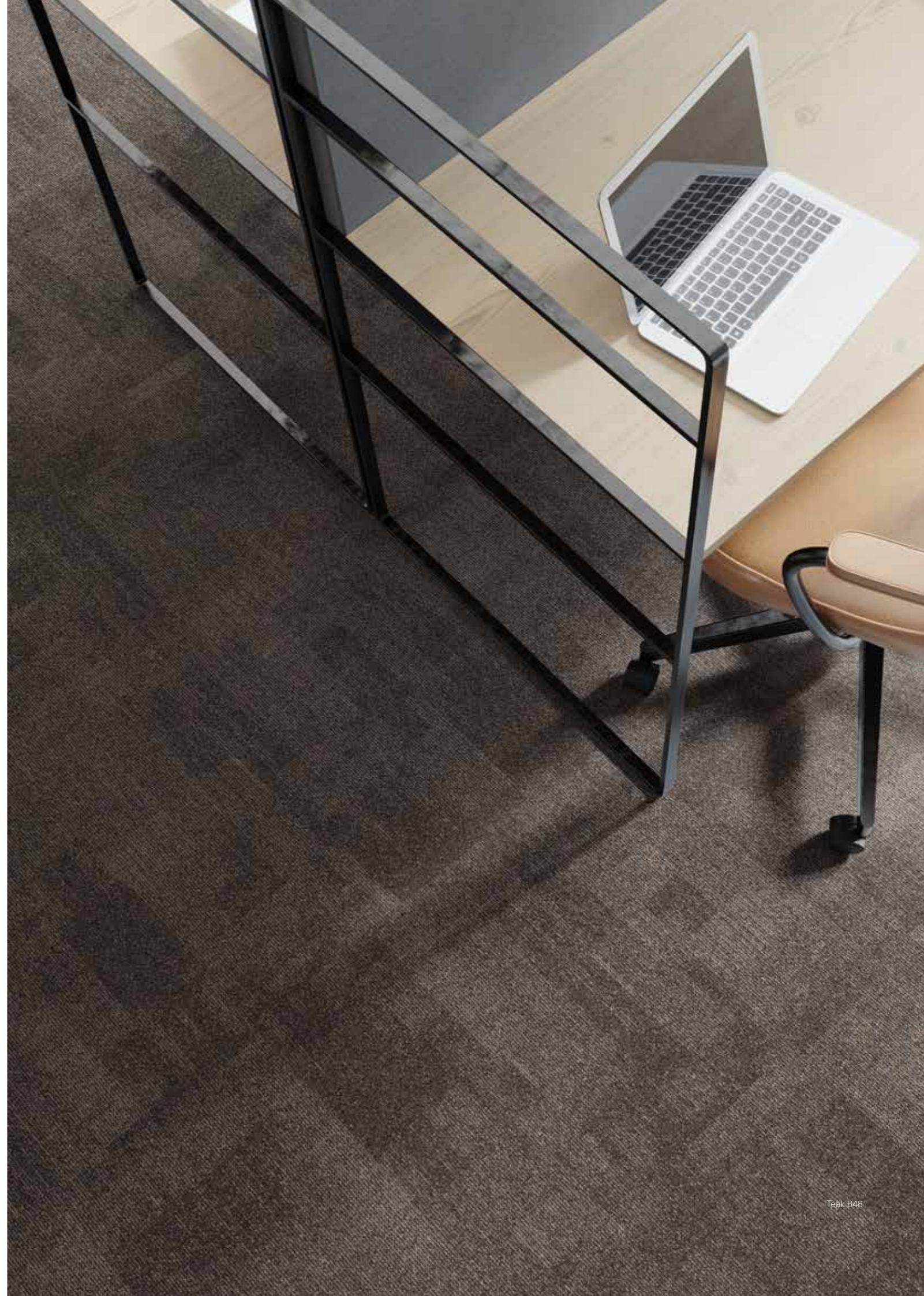
Flare	Reflect	Basalt	Jute
1/12" Pattern Perfect®	1/12" Pattern Perfect®	Tufted 1/12" gauge loop	Tufted 1/12" gauge loop
100% solution dyed nylon	100% solution dyed nylon	100% solution dyed nylon	100% solution dyed nylon
EcoFlex™ Statera (modified bitumen, 70% recycled content)	EcoFlex™ Statera (modified bitumen, 70% recycled content)	EcoFlex™ Statera (modified bitumen, 70% recycled content)	EcoFlex™ Statera (modified bitumen, 70% recycled content)
± 4000 g/m <sup>2</sup>	± 4000 g/m <sup>2</sup>	± 4400 g/m <sup>2</sup>	± 4400 g/m <sup>2</sup>
± 540 g/m <sup>2</sup>	± 540 g/m <sup>2</sup>	± 600 g/m <sup>2</sup>	± 600 g/m <sup>2</sup>
± 346 g/m <sup>2</sup>	± 313 g/m <sup>2</sup>	± 390 g/m <sup>2</sup>	± 415 g/m <sup>2</sup>
± 6,3 mm	± 6,1 mm	± 6,4 mm	± 6,4 mm
± 3,0 mm	± 3,0 mm	± 3,1 mm	± 3,2 mm
± 0,115 g/cm <sup>3</sup>	± 0,104 g/cm <sup>3</sup>	± 0,125 g/cm <sup>3</sup>	± 0,127 g/cm <sup>3</sup>
± 198.394/ m <sup>2</sup>	± 198.394/ m <sup>2</sup>	224.400/m <sup>2</sup>	224.400/m <sup>2</sup>
33 / LC1	33 / LC1	33 / LC1	33 / LC2
A: intensive use	A: intensive use	A: intensive use	A: intensive use
Bfl-s1	Bfl-s1	Bfl-s1	Bfl-s1
≤ 0,2%	≤ 0,2%	≤ 0,2%	≤ 0,2%
≥ 7	≥ 7	≥ 7	≥ 7
≥ 4	≥ 4	≥ 4	≥ 4
≥ 4	≥ 4	≥ 4	≥ 4
0,070 m <sup>2</sup> .K/W	0,068 m <sup>2</sup> .K/W	0,066 m <sup>2</sup> .K/w	0,069 m <sup>2</sup> .K/W
0,15 αw	0,15 αw	0,15 αw	0,15 αw
Hz 125 250 500 1000 2000 4000 αs 0,00 0,03 0,06 0,16 0,27 0,36	Hz 125 250 500 1000 2000 4000 αs 0,00 0,02 0,06 0,16 0,28 0,37	Hz 125 250 500 1000 2000 4000 αw 0,02 0,03 0,08 0,16 0,29 0,33	Hz 125 250 500 1000 2000 4000 αw 0,02 0,02 0,07 0,16 0,29 0,33
ΔLw = 24 dB	ΔLw = 25 dB	ΔLw = 28 dB	ΔLw = 28 dB
≤ 2 kV	≤ 2 kV	≤ 2 kV	≤ 2 kV
8	8	12	12
50 x 50 cm 5 m <sup>2</sup> /box - 24 boxes/pallet	50 x 50 cm 5 m <sup>2</sup> /box - 24 boxes/pallet	50 x 50 cm 5 m <sup>2</sup> /box - 24 boxes/pallet	50 x 50 cm 5 m <sup>2</sup> /box - 24 boxes/pallet
Ongoing	Ongoing	65EB708B	94EFCC68
		15	15





Teak	Clay	Clay Create	Metallic Clay
Tufted 1/12" gauge loop	Tufted 1/12" gauge loop	Tufted 1/12" gauge loop	Tufted 1/12" gauge loop
100% solution dyed nylon	100% solution dyed nylon	100% solution dyed nylon	100% solution dyed nylon
EcoFlex™ Statera (modified bitumen, 70% recycled content)	EcoFlex™ Statera (modified bitumen, 70% recycled content)	EcoFlex™ Statera (modified bitumen, 70% recycled content)	EcoFlex™ Statera (modified bitumen, 70% recycled content)
± 4400 g/m <sup>2</sup>	± 4495 g/m <sup>2</sup>	± 4495 g/m <sup>2</sup>	± 4495 g/m <sup>2</sup>
± 600 g/m <sup>2</sup>	± 600 g/m <sup>2</sup>	± 600 g/m <sup>2</sup>	± 600 g/m <sup>2</sup>
± 370 g/m <sup>2</sup>	± 384 g/m <sup>2</sup>	± 384 g/m <sup>2</sup>	± 384 g/m <sup>2</sup>
± 6,4 mm	± 7,1 mm	± 7,1 mm	± 7,1 mm
± 2,9 mm	± 3,4 mm	± 3,4 mm	± 3,4 mm
± 0,127 g/cm <sup>3</sup>	± 0,115 g/cm <sup>3</sup>	± 0,115 g/cm <sup>3</sup>	± 0,115 g/cm <sup>3</sup>
224.400/m <sup>2</sup>	205.000/ m <sup>2</sup>	205.000/ m <sup>2</sup>	205.000/m <sup>2</sup>
33 / LC1	33 / LC1	33 / LC1	33 / LC1
A: intensive use	A: intensive use	A: intensive use	A: intensive use
Bfl-s1	Bfl-s1	Bfl-s1	Bfl-s1
≤ 0,2%	≤ 0,2%	≤ 0,2%	≤ 0,2%
≥ 7	≥ 7	≥ 7	≥ 7
≥ 4	≥ 4	≥ 4	≥ 4
≥ 4	≥ 4	≥ 4	≥ 4
0,065 m <sup>2</sup> .K/W	0,076 m <sup>2</sup> .K/W	0,076 m <sup>2</sup> .K/W	0,076 m <sup>2</sup> .K/W
0,15 aw	0,15 aw	0,15 aw	0,20 aw
Hz 125 250 500 1000 2000 4000 aw 0,01 0,03 0,07 0,16 0,29 0,33	Hz 125 250 500 1000 2000 4000 as 0,02 0,03 0,07 0,19 0,34 0,57	Hz 125 250 500 1000 2000 4000 as 0,02 0,03 0,07 0,19 0,34 0,57	Hz 125 250 500 1000 2000 4000 as 0,02 0,02 0,08 0,21 0,32 0,45
ΔLw = 28 dB	ΔLw = 28 dB	ΔLw = 28 dB	ΔLw = 26 dB
≤ 2 kV	≤ 2 kV	≤ 2 kV	≤ 2 kV
12	12	12	9
50 x 50 cm 5 m <sup>2</sup> /box - 24 boxes/pallet	25 x 100 cm 5 m <sup>2</sup> /box - 24 boxes/pallet	25 x 100 cm 5 m <sup>2</sup> /box - 24 boxes/pallet	25 x 100 cm 5 m <sup>2</sup> /box - 24 boxes/pallet
AB56D646	E4C2F79C	5E8698AB	9ADE6ED5
15	15	15	15

Photographic images are not representative due to variations in colour printing.  
The representative samples shown are sectional definitions. For full design representation, please visit the website.





 Mohawk Group

---

[www.mohawkgroup.eu](http://www.mohawkgroup.eu)

---

